

LOC/DME I-CRP <u>110.3</u> Chan 40	APP CRS 132°	Rwy Idg 7510 TDZE 46 Apt Elev 46
--	------------------------	---

ILS or LOC RWY 13
CORPUS CHRISTI INTL (CRP)

- T** Autopilot coupled approach NA below 260.
A For inop ALS, increase S-ILS 13 Cat E visibility to RVR 4000 and S-LOC 13 Cats C, D, and E visibility to RVR 5500.
 *RVR 1800 authorized with use of FD or AP or HUD to DA.

MISSED APPROACH: Climb to 500 then climbing right turn to 2000 on heading 132° and CRP VORTAC R-169 to SOLON INT/CRP VORTAC 28 DME and hold.

ATIS 126.8	CORPUS APP CON 120.9 348.725	CORPUS TOWER 119.4 257.8	GND CON 121.9 269.15	CLNC DEL 118.55
---------------	---------------------------------	-----------------------------	-------------------------	--------------------

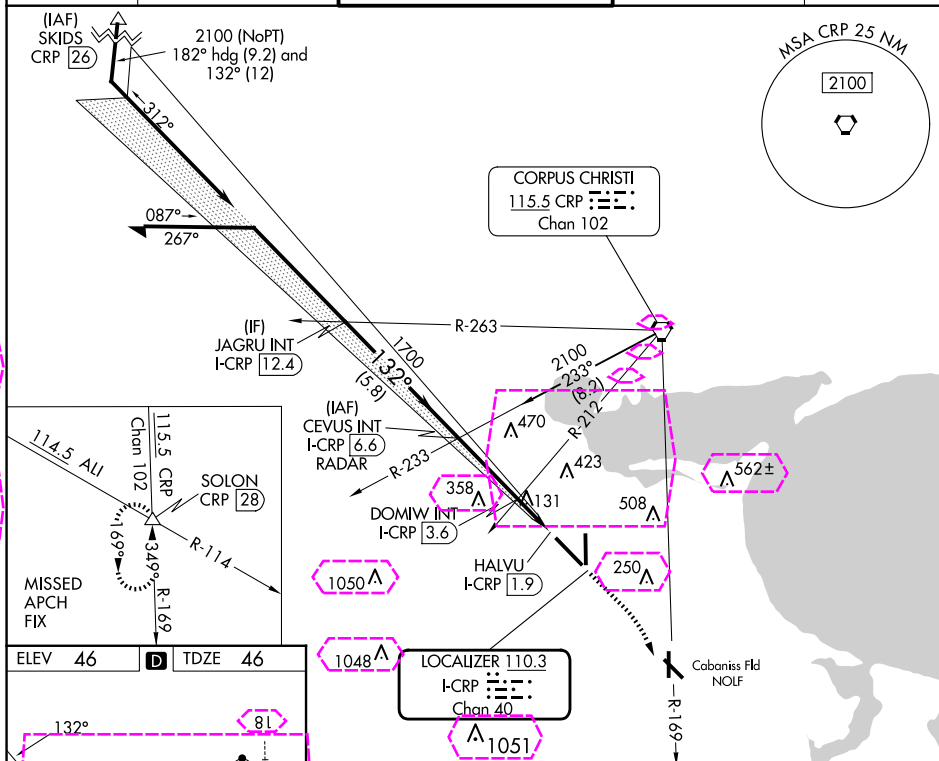


Diagram of HIRL Runways 13-31 and 18-36. Runway 13-31 is 7510 x 150 feet. Runway 18-36 is 6080 x 150 feet. The diagram shows the runway layout, taxiways, and surrounding terrain. A table below the diagram provides FAF to MAP distances for various speeds.

FAF to MAP 4.7 NM					
Knots	60	90	120	150	180
Min:Sec	4:42	3:08	2:21	1:53	1:34

Remain within 15 NM

CEVUS INT I-CRP RADAR 6.6

500

2000

SOLON \triangle

hdg 132° CRP R-169

2100

312°

1700

132°

DOMIW INT I-CRP 3.6

GS 3.00° TCH 50

1700

720

I-CRP 2.5

HALVU I-CRP 1.9

Use I-CRP DME when on the localizer course.

3 NM 1.1 0.6 0.3

CATEGORY	A	B	C	D	E
S-ILS 13*	246/24 200 (200-½)				
S-LOC 13	400/24	354 (400-½)	400/30	354 (400-⅝)	
C CIRCLING	500-1 454 (500-1)	780-1 734 (800-1)	820-2¼ 774 (800-2¼)	820-2½ 774 (800-2½)	820-2¾ 774 (800-2¾)

CORPUS CHRISTI, TEXAS

AL-5032 (FAA)

25219

LOC/DME I-CRP 110.3 Chan 40	APP CRS 132°	Rwy Ldg TDZE 46 Apt Elev 46
---	------------------------	---

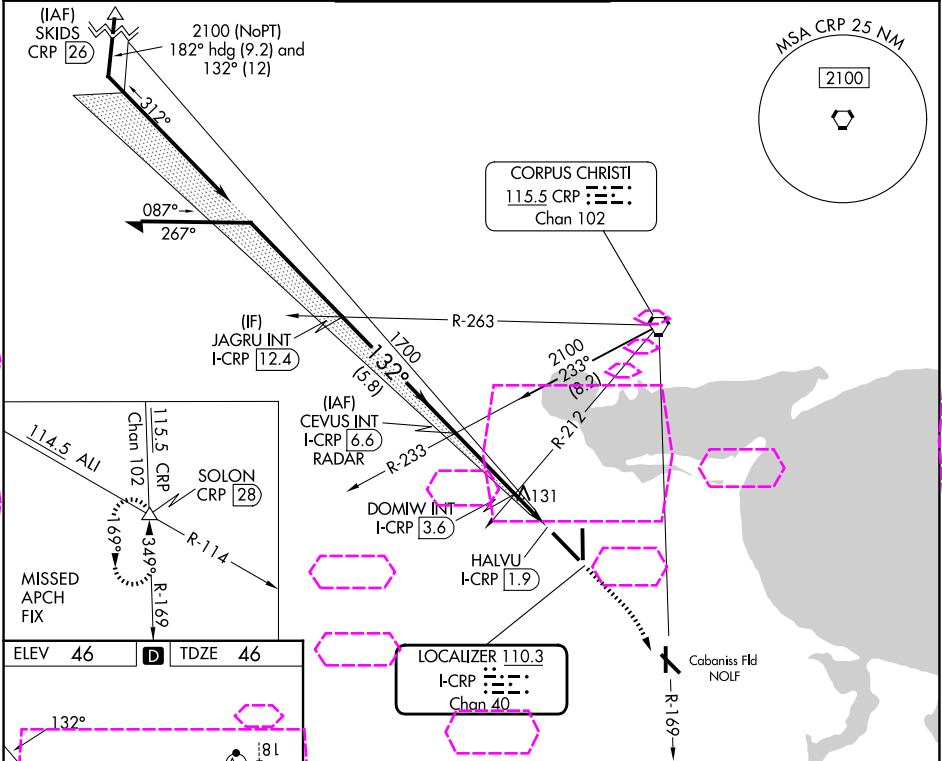
ILS or LOC RWY 13
CORPUS CHRISTI INTL (CRP)

Autopilot coupled approach NA below 260.
For inop ALS, increase S-ILS 13 Cat E visibility to RVR 4000
and S-LOC 13 Cats C, D, and E visibility to RVR 5500.
*RVR 1800 authorized with use of FD or AP or HUD to DA.

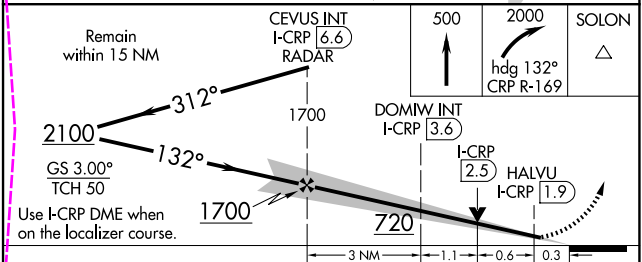
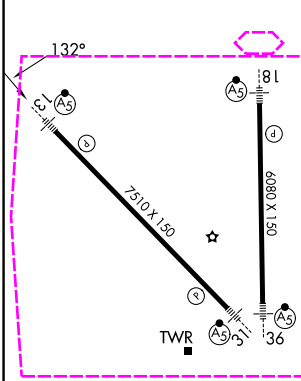
MALSR

MISSED APPROACH: Climb to 500 then climbing right turn to 2000 on heading 132° and CRP VORTAC R-169 to SOLON INT/CRP VORTAC 28 DME and hold.

ATIS 126.8	CORPUS APP CON 120.9 348.725	CORPUS TOWER 119.4 257.8	GND CON 121.9 269.15	CLNC DEL 118.55
----------------------	--	------------------------------------	--------------------------------	---------------------------



ELEV 46	D	TDZE 46
---------	---	---------



HIRL Rwy 13-31 and 18-36					
FAF to MAP 4.7 NM					
Knots	60	90	120	150	180
Min:Sec	4:42	3:08	2:21	1:53	1:34
CATEGORY	A	B	C	D	E
S-ILS 13*	246/24 200 (200-½)				
S-LOC 13	400/24	354 (400-½)	400/30	354 (400-¾)	
CIRCLING	500-1 454 (500-1)	780-1 734 (800-1)	820-2¼ 774 (800-2¼)	820-2½ 774 (800-2½)	820-2¾ 774 (800-2¾)

CORPUS CHRISTI, TEXAS
Amdt 28B 02NOV23

27°46'N-97°30'W

CORPUS CHRISTI INTL (CRP)
ILS or LOC RWY 13

SC-3, 07 AUG 2025 to 04 SEP 2025

SC-3, 07 AUG 2025 to 04 SEP 2025