


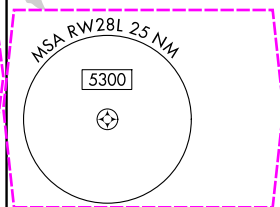
RNAV (GPS) RWY 28L
HAYWARD EXEC (HWD)

MISSED APPROACH: Climb to 600 then climbing right turn to 2100 direct OAK VOR/DME and hold.

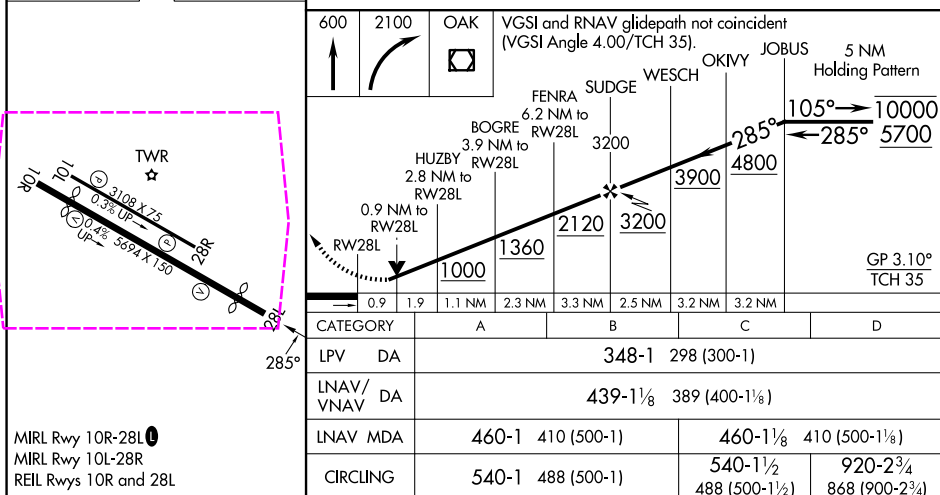
ATIS 126.7	NORCAL APP CON 124.4 351.8	HAYWARD TOWER* 120.2 (CTAF) 0 257.8	GND CON 121.4	CLNC DEL 128.05	UNICOM 122.95
---------------	-------------------------------	--	------------------	--------------------	------------------



Procedure NA for arrivals at SUNOL on V301 northwest bound and on V334 northbound.



ELEV	52		TDZE	50
------	----	--	------	----

HAYWARD EXEC (HWD)
RNAV (GPS) RWY 28L