

HAYWARD, CALIFORNIA

AL-5015 (FAA)

25051

LOC/DME I-HWD 111.5 Chan 52	APP CRS 288°	Rwy Idg TDZE 50 Apt Elev 52
---	------------------------	---

LOC RWY 28L

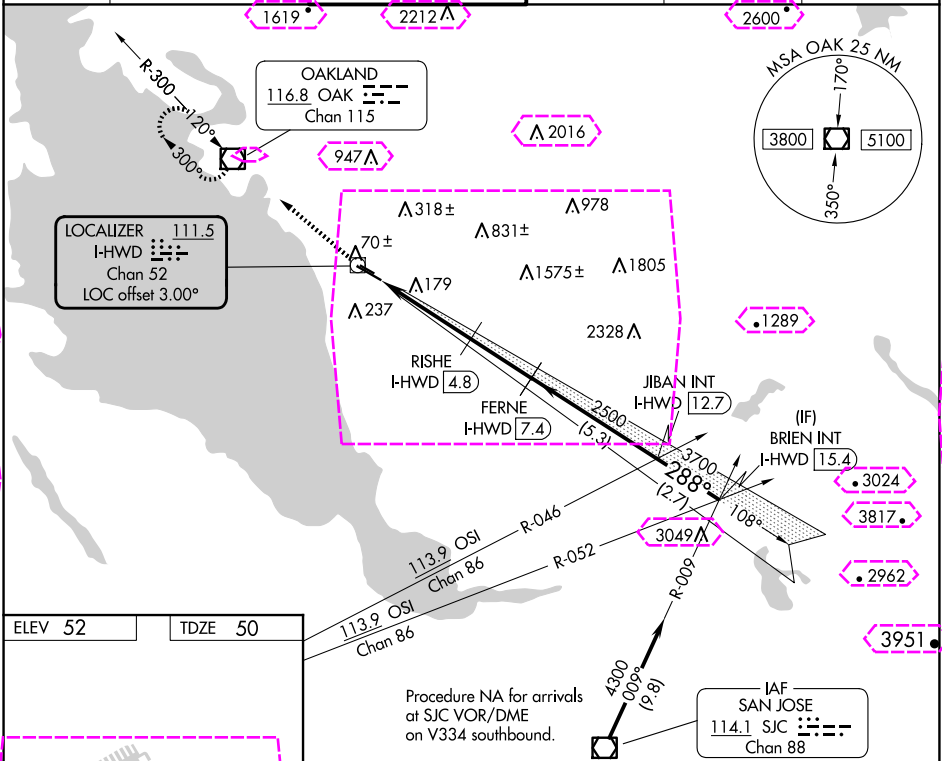
HAYWARD EXEC (HWD)

DME required.

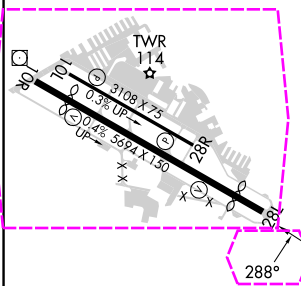
⚠ Rwy 28L helicopter visibility reduction below ¾ SM NA. Circling Rwy 10L, 28R NA at night. Circling NA north of Rwy 10L-28R. When local altimeter setting not received, use OAK altimeter setting and increase all MDAs 40 feet and Circling visibility Cat D ¾ SM.

MISSED APPROACH: Climb to 2100 direct OAK VOR/DME and hold.

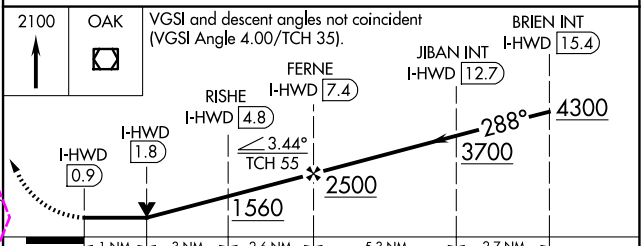
ATIS 126.7	NORCAL APP CON 124.4 351.8	HAYWARD TOWER ★ 120.2 (CTAF) 257.8	GND CON 121.4	CLNC DEL 128.05	UNICOM 122.95
----------------------	--------------------------------------	--	-------------------------	---------------------------	-------------------------



ELEV 52	TDZE 50
----------------	----------------



MIRL Rwy 10R-28L
MIRL Rwy 10L-28R
REIL Rwy 10R and 28L



CATEGORY	A	B	C	D
S-28L	500-1	450 (500-1)	500-1 ¾	450 (500-1 ¾)
CIRCLING	540-1	488 (500-1)	540-1 ½ 488 (500-1 ½)	920-2 ¾ 868 (900-2 ¾)

HAYWARD, CALIFORNIA
Amdt 3E 20FEB25

37°40'N-122°07'W

HAYWARD EXEC (HWD)
LOC RWY 28L

SW-2, 10 JUL 2025 to 07 AUG 2025

SW-2, 10 JUL 2025 to 07 AUG 2025

HAYWARD, CALIFORNIA

AL-5015 (FAA)

25219

LOC/DME I-HWD 111.5 Chan 52	APP CRS 288°	Rwy Ldg TDZE Apt Elev 52
---	------------------------	---------------------------------------

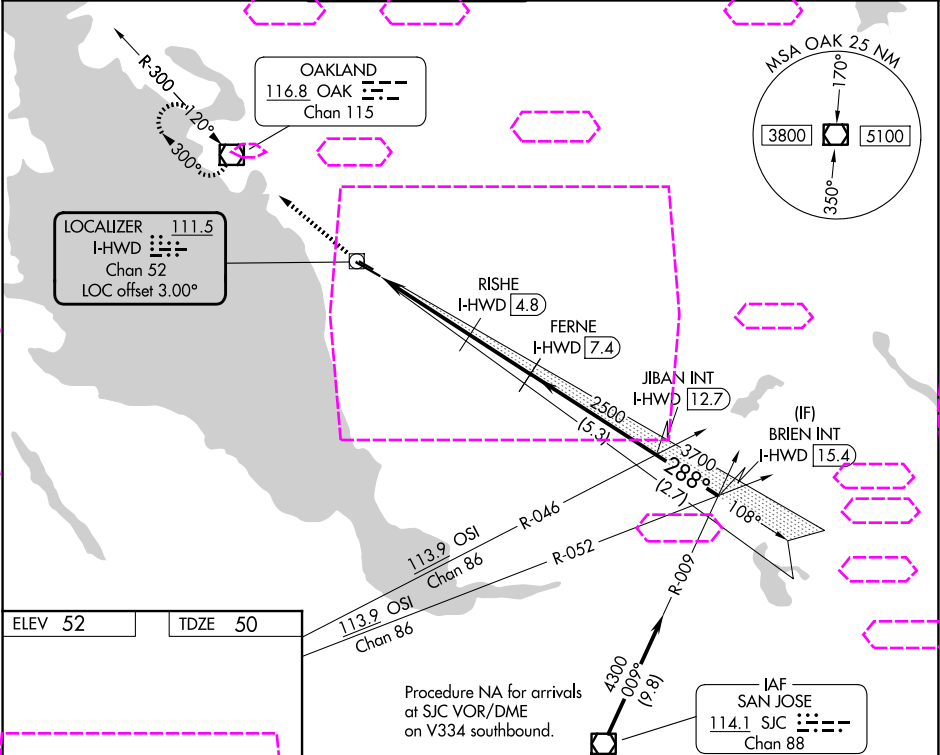
LOC RWY 28L
HAYWARD EXEC (HWD)

DME required.

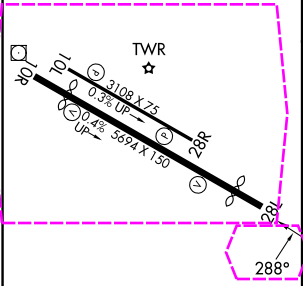
▼ Rwy 28L helicopter visibility reduction below ¼ SM NA. Circling Rwy 10L, 28R NA at night. Circling NA north of Rwy 10L-28R. When local altimeter setting not received, use OAK altimeter setting and increase all MDAs 40 feet and Circling visibility Cat D ¼ SM.

MISSED APPROACH: Climb to 2100 direct OAK VOR/DME and hold.

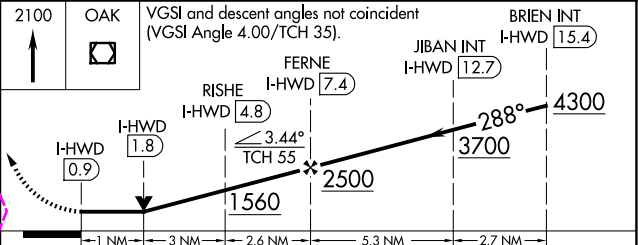
ATIS 126.7	NORCAL APP CON 124.4 351.8	HAYWARD TOWER ★ 120.2 (CTAF) 257.8	GND CON 121.4	CLNC DEL 128.05	UNICOM 122.95
----------------------	--------------------------------------	--	-------------------------	---------------------------	-------------------------



ELEV 52	TDZE 50
----------------	----------------



MIRL Rwy 10R-28L
MIRL Rwy 10L-28R
REIL Rwy 10R and 28L



CATEGORY	A	B	C	D
S-28L	500-1	450 (500-1)	500-1 ⅓	450 (500-1 ⅓)
CIRCLING	540-1	488 (500-1)	540-1 ½	920-2 ¾

HAYWARD, CALIFORNIA
Amdt 3E 20FEB25

37°40'N-122°07'W

HAYWARD EXEC (HWD)
LOC RWY 28L

SW-2, 07 AUG 2025 to 04 SEP 2025

SW-2, 07 AUG 2025 to 04 SEP 2025