

DELAWARE COUNTY RGRL (MIE)  
VOR RWY 21

EC-2, 10 JUL 2025 to 07 AUG 2025

MUNCIE, INDIANA

AL-5011 (FAA)

25219

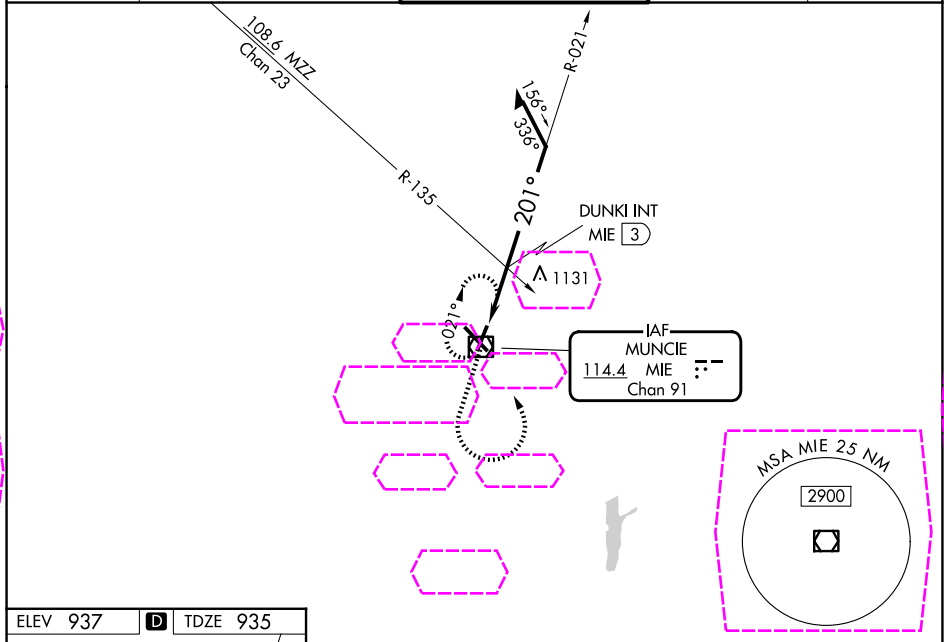
VOR/DME MIE	APP CRS	Rwy Ldg
114.4	201°	5197
Chan 91		TDZE 935
		Apt Elev 937

VOR RWY 21  
DELAWARE COUNTY RGNL (MIE)

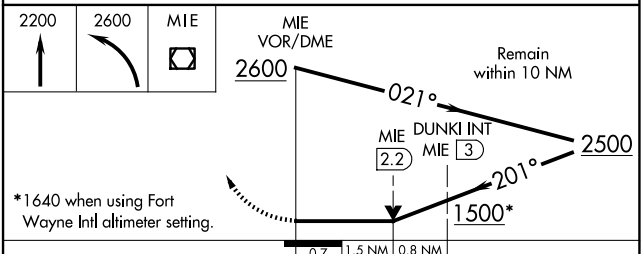
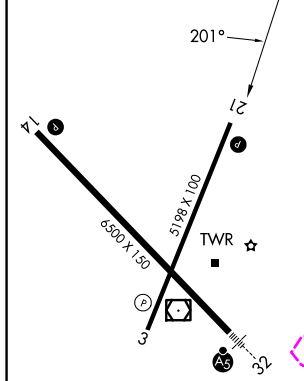
▼ Visibility reduction by helicopters NA. When local altimeter setting not received, use Fort Wayne Intl altimeter setting and increase all MDAs 140 feet; increase S-21 Cat C visibility ½ SM and Cat D visibility ¼ SM; increase Circling Cat C visibility ½ SM and Cat D ¼ SM; DUNKI fix minimums: increase S-21 Cat C/D ¾ SM and Circling visibility Cat C/D ½ SM. VDP NA when using Fort Wayne Intl altimeter setting.

▲ MISSED APPROACH: Climb to 2200 then climbing left turn to 2600 direct MIE VOR/DME and hold.

ATIS 133.25	INDIANAPOLIS APP CON 120.65 317.8	MUNCIE TOWER★ 120.1 (CTAF) 0	GND CON 121.9	UNICOM 122.95
----------------	--------------------------------------	---------------------------------	------------------	------------------



ELEV 937	D	TDZE 935
----------	---	----------



CATEGORY	A	B	C	D
S-21	1500-1 565 (600-1)		1500-1½ 565 (600-1½)	1500-1¾ 565 (600-1¾)
CIRCLING	1500-1 563 (600-1)		1500-1½ 563 (600-1½)	1560-2 623 (700-2)
DUNKI FIX MINIMUMS (DUAL VOR RECEIVERS OR DME REQUIRED)				
S-21	1440-1 505 (600-1)		1440-1½ 505 (600-1½)	
CIRCLING	1460-1 523 (600-1)		1480-1½ 543 (600-1½)	1560-2 623 (700-2)

HIRL Rwy 14-32  
MIRL Rwy 3-21  
REIL Rwy 3, 14 and 21

MUNCIE, INDIANA  
Amdt 14A 18JUN20

40°15'N-85°24'W

DELAWARE COUNTY RGNL (MIE)  
VOR RWY 21

EC-2, 07 AUG 2025 to 04 SEP 2025

EC-2, 07 AUG 2025 to 04 SEP 2025