

REC-2, 10 JUL 2025 to 07 AUG 2025

MUNCIE, INDIANA

AL-5011 (FAA)

25219

VOR/DME MIE	APP CRS	Rwy Ldg	6500
114.4	143°	TDZE	933
Chan 91		Apt Elev	937

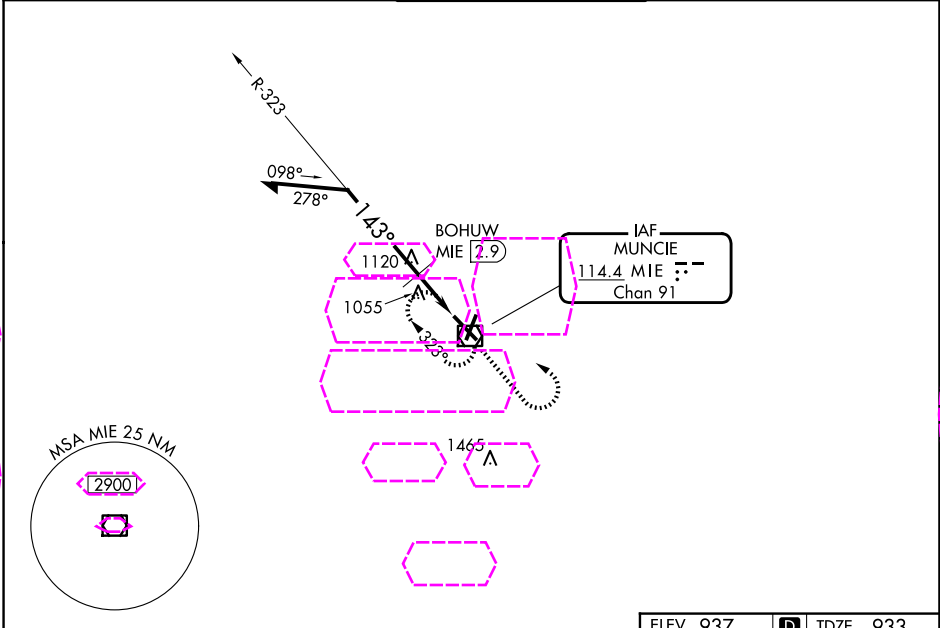
VOR RWY 14

DELAWARE COUNTY RGNL (MIE)

**⚠** VDP NA when using FWA altimeter setting. When local altimeter setting not received, use FWA altimeter setting and increase all MDAs 140 feet; increase S-14 Cat C visibility  $\frac{1}{2}$  SM, Cat D  $\frac{1}{4}$  SM; increase Circling Cat C/D visibility  $\frac{1}{2}$  SM. BOHUW fix minimums: increase S-14 Cat C visibility  $\frac{1}{2}$  SM, Cat D  $\frac{1}{4}$  SM and Circling Cat C/D visibility  $\frac{1}{2}$  SM.

MISSED APPROACH: Climb to 2600 then left turn direct MIE VOR/DME and hold.

ATIS 133.25	INDIANAPOLIS APP CON 120.65 317.8	MUNCIE TOWER ★ 120.1 (CTAF) 0	GND CON 121.9	UNICOM 122.95
----------------	--------------------------------------	----------------------------------	------------------	------------------



Remain within 10 NM

2500

BOHUW MIE 2.9

MIE 2.1

\*1480

0.8 1.3 0.8

323°

143°

2600

MIE VOR/DME

\*1620 when using FWA altimeter setting.

ELEV 937 D TDZE 933

143°

5198 X 100

6500 X 130

TWR

14

3

21

CATEGORY	A	B	C	D
S-14	1480-1 547 (600-1)		1480-1 $\frac{1}{2}$ 547 (600-1 $\frac{1}{2}$ )	1480-1 $\frac{3}{4}$ 547 (600-1 $\frac{3}{4}$ )
CIRCLING	1480-1 543 (600-1)		1500-1 $\frac{1}{2}$ 563 (600-1 $\frac{1}{2}$ )	1560-2 623 (700-2)
BOHUW FIX MINIMUMS				
S-14	1380-1 447 (500-1)		1380-1 $\frac{1}{4}$ 447 (500-1 $\frac{1}{4}$ )	1380-1 $\frac{1}{2}$ 447 (500-1 $\frac{1}{2}$ )
CIRCLING	1460-1 523 (600-1)		1500-1 $\frac{1}{2}$ 563 (600-1 $\frac{1}{2}$ )	1560-2 623 (700-2)

HIRL Rwy 14-32 0

MIRL Rwy 3-21 0

REIL Rwys 3, 14 and 21 0

MUNCIE, INDIANA  
Amdt 17C 07AUG25

40°15'N-85°24'W

DELAWARE COUNTY RGNL (MIE)  
VOR RWY 14

EC-2, 07 AUG 2025 to 04 SEP 2025

EC-2, 07 AUG 2025 to 04 SEP 2025