

MUNCIE, INDIANA

AL-5011 (FAA)

25163

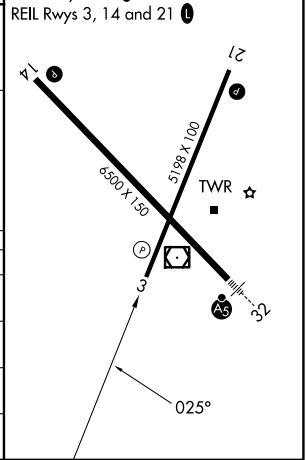
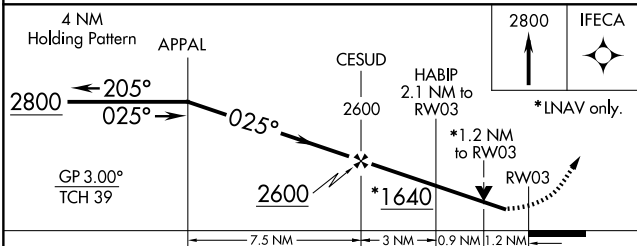
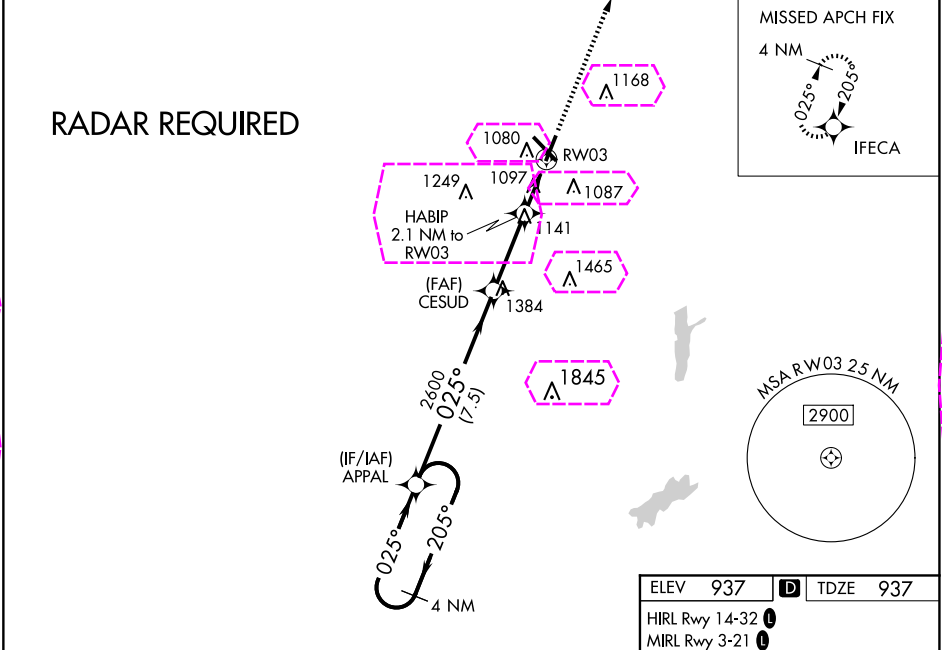
WAAS CH <b>78237</b> <b>W03A</b>	APP CRS <b>025°</b>	Rwy Ldg <b>5197</b> TDZE <b>937</b> Apt Elev <b>937</b>
--	------------------------	---

**RNAV (GPS) RWY 3**  
DELAWARE COUNTY RGNL (MIE)

**⚠** For uncompensated Baro-VNAV systems, LNAV/VNAV NA below -20°C (-4°F) or above 54°C (130°F). DME/DME RNP-0.3 NA. When local altimeter setting not received, use Fort Wayne Intl altimeter setting and increase all DA 121 feet and all MDA 140 feet; increase LPV all Cats and LNAV Cats C/D visibility ¾ mile, LNAV/VNAV all Cats visibility ¾ mile and Circling Cats C/D visibility ½ mile. Baro-VNAV NA when using Fort Wayne Intl altimeter setting. Helicopter visibility reduction below ¾ SM NA.

**MISSED APPROACH:**  
Climb to 2800 direct IFECA and hold.

ATIS <b>133.25</b>	INDIANAPOLIS APP CON <b>120.65 317.8</b>	MUNCIE TOWER ★ <b>120.1 (CTAF) 0</b>	GND CON <b>121.9</b>	UNICOM <b>122.95</b>
-----------------------	---	---	-------------------------	-------------------------



CATEGORY	A	B	C	D
LPV DA		1190-7/8	253 (300-7/8)	
LNAV/VNAV DA		1412-1 5/8	475 (500-1 5/8)	
LNAV MDA	1360-1	423 (500-1)	1360-1 1/4	423 (500-1 1/4)
<b>CIRCLING</b>	1460-1	523 (600-1)	1500-1 1/2 563 (600-1 1/2)	1600-2 663 (700-2)

MUNCIE, INDIANA  
Orig 05MAR15

40°15'N-85°24'W

DELAWARE COUNTY RGNL (MIE)  
**RNAV (GPS) RWY 3**

EC-2, 10 JUL 2025 to 07 AUG 2025

EC-2, 10 JUL 2025 to 07 AUG 2025

MUNCIE, INDIANA

AL-5011 (FAA)

25219

WAAS CH <b>78237</b> <b>W03A</b>	APP CRS <b>025°</b>	Rwy Ldg <b>5197</b> TDZE <b>937</b> Apt Elev <b>937</b>
--	------------------------	---

# RNAV (GPS) RWY 3

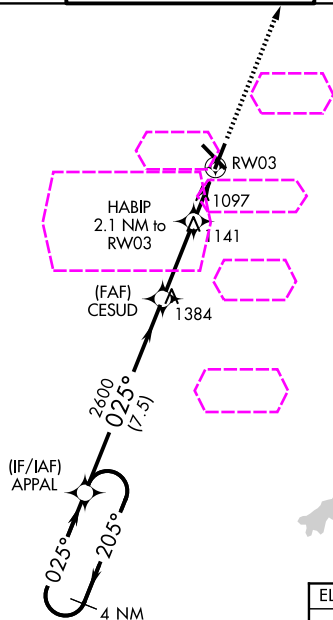
DELAWARE COUNTY RGNL (MIE)

**⚠** For uncompensated Baro-VNAV systems, LNAV/VNAV NA below -20°C (-4°F) or above 54°C (130°F). DME/DME RNP-0.3 NA. When local altimeter setting not received, use Fort Wayne Intl altimeter setting and increase all DA 121 feet and all MDA 140 feet; increase LPV all Cats and LNAV Cats C/D visibility  $\frac{3}{8}$  mile, LNAV/VNAV all Cats visibility  $\frac{7}{8}$  mile and Circling Cats C/D visibility  $\frac{1}{2}$  mile. Baro-VNAV NA when using Fort Wayne Intl altimeter setting. Helicopter visibility reduction below  $\frac{3}{4}$  SM NA.

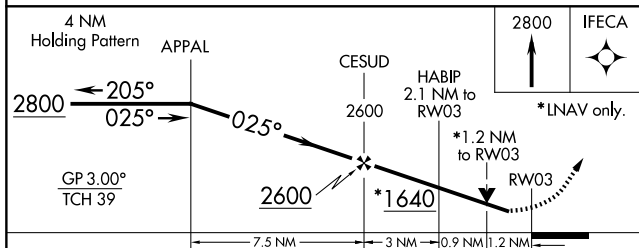
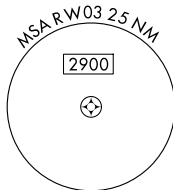
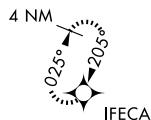
MISSED APPROACH:  
Climb to 2800 direct  
IFECA and hold.

ATIS <b>133.25</b>	INDIANAPOLIS APP CON <b>120.65 317.8</b>	MUNCIE TOWER ★ <b>120.1 (CTAF) 0</b>	GND CON <b>121.9</b>	UNICOM <b>122.95</b>
-----------------------	---	---	-------------------------	-------------------------

RADAR REQUIRED

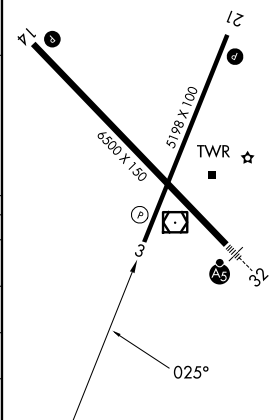


MISSED APCH FIX



ELEV 937 **D** TDZE 937

HIRL Rwy 14-32 **0**  
MIRL Rwy 3-21 **0**  
REIL Rwy 3, 14 and 21 **0**



CATEGORY	A	B	C	D
LPV DA		1190- $\frac{7}{8}$	253 (300- $\frac{7}{8}$ )	
LNAV/VNAV DA		1412-1 $\frac{5}{8}$	475 (500-1 $\frac{5}{8}$ )	
LNAV MDA	1360-1	423 (500-1)	1360-1 $\frac{1}{4}$	423 (500-1 $\frac{1}{4}$ )
CIRCLING	1460-1	523 (600-1)	1500-1 $\frac{1}{2}$ 563 (600-1 $\frac{1}{2}$ )	1600-2 663 (700-2)

MUNCIE, INDIANA  
Orig 05MAR15

40°15'N-85°24'W

DELAWARE COUNTY RGNL (MIE)  
RNAV (GPS) RWY 3

EC-2, 07 AUG 2025 to 04 SEP 2025

EC-2, 07 AUG 2025 to 04 SEP 2025