

MUNCIE, INDIANA

AL-5011 (FAA)

25163

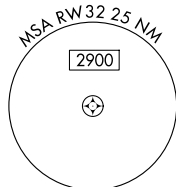
WAAS CH 72601 W32A	APP CRS 319°	Rwy Ldg TDZE Apt Elev	6500 937 937
--	------------------------	-----------------------------	---

RNAV (GPS) RWY 32

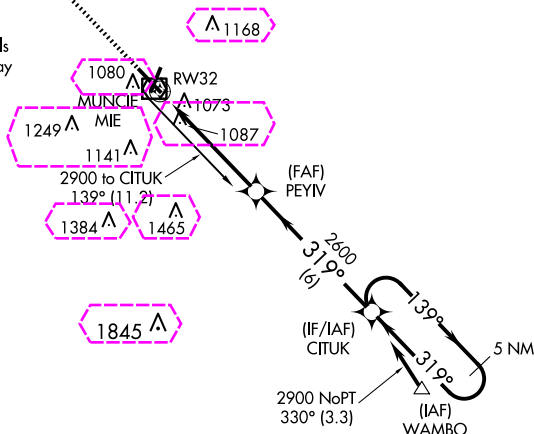
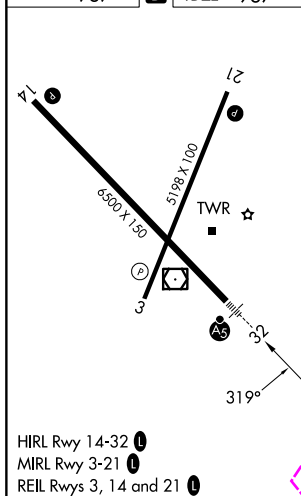
DELAWARE COUNTY RGNL (MIE)

<p>▼ For uncompensated Baro-VNAV systems, LNAV/VNAV NA below -16°C (4°F) or above 47°C (116°F). DME/DME RNP-0.3 NA. Baro-VNAV and VDP NA when using Fort Wayne Intl altimeter setting. For inop MALSR when using Fort Wayne Intl altimeter setting, increase LPV all Cats visibility to 1½ mile. When local altimeter setting not received, use Fort Wayne Intl altimeter setting and increase DA 121 feet; increase LPV and LNAV/VNAV all Cats visibility by ½ mile; increase all MDA 140 feet and LNAV visibility Cats C and D to 1¼; increase Circling visibility Cats C and D by ¼ mile. For inop MALSR, increase all LPV Cats visibility to 1 SM.</p>	<p>MALSR</p>	<p>MISSED APPROACH: Climb to 2800 direct JOGBA and hold.</p>
---	---------------------	---



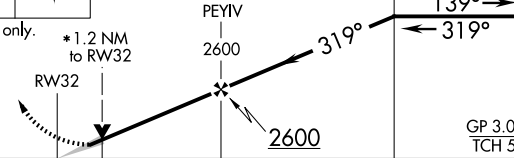

ATIS 133.25	INDIANAPOLIS APP CON 120.65 317.8	MUNCIE TOWER ★ 120.1 (CTAF) 0	GND CON 121.9	UNICOM 122.95
-----------------------	---	---	-------------------------	-------------------------



Procedure NA for arrivals
on MIE VOR/DME airway
radials 090 CW 109.

ELEV 937 **D** TDZE 937

HIRL Rwy 14-32 **1**
MRL Rwy 3-21 **1**
REIL Rwy 3, 14 and 21 **1**

2800	JOGBA	5 NM Holding Pattern			
					
* LNAV only.	* 1.2 NM to RW32				
RW32	PEYIV 2600	CITUK	2900	GP 3.04° TCH 52	
					
CATEGORY	A	B	C	D	
LPV DA	1241-1/2 304 (400-1/2)				
LNAV/ VNAV DA	1396-1 1/8 459 (500-1 1/8)				
LNAV MDA	1460-1/2 523 (600-1/2)		1460-1 523 (600-1)		
 CIRCLING	1460-1 523 (600-1)		1480-1 1/2 543 (600-1 1/2)		1560-2 623 (700-2)

MUNCIE, INDIANA
Orig-B 12OCT17

40°15'N-85°24'W

DELAWARE COUNTY RGNL (MIE)

RNAV (GPS) RWY 32

EC-2, 10 JUL 2025 to 07 AUG 2025

EC-2, 10 JUL 2025 to 07 AUG 2025

