

MUNCIE, INDIANA

AL-5011 (FAA)

25163

WAAS CH <b>53537</b> <b>W21A</b>	APP CRS <b>205°</b>	Rwy Ldg TDZE <b>935</b> Apt Elev <b>937</b>
--	------------------------	---

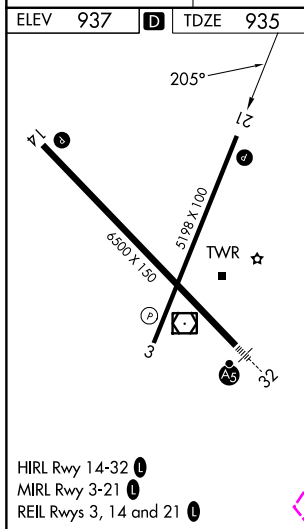
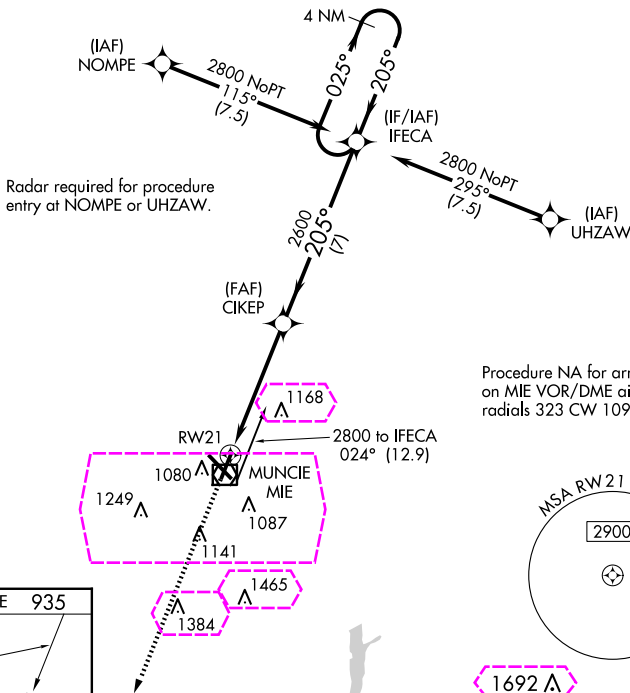
# RNAV (GPS) RWY 21

DELAWARE COUNTY RGNL (MIE)

For uncompensated Baro-VNAV systems, LNAV/VNAV NA below -20°C (-4°F) or above 54°C (130°F). DME/DME RNP-0.3 NA. When local altimeter setting not received, use Fort Wayne Intl altimeter setting and increase all DA 121 feet and all MDA 140 feet; increase LPV all Cats and LNAV Cats C/D visibility  $\frac{3}{8}$  mile and LNAV/VNAV all Cats and Circling Cats C/D visibility  $\frac{1}{2}$  mile. Baro-VNAV and VDP NA when using Fort Wayne Intl altimeter setting. Helicopter visibility reduction below  $\frac{3}{4}$  SM NA.

MISSED APPROACH:  
Climb to 2800 direct  
APPAL and hold.

ATIS <b>133.25</b>	INDIANAPOLIS APP CON <b>120.65 317.8</b>	MUNCIE TOWER ★ <b>120.1 (CTAF)</b>	GND CON <b>121.9</b>	UNICOM <b>122.95</b>
-----------------------	---	---------------------------------------	-------------------------	-------------------------



2800	APPAL	*LNAV only	CIKEP	IFECA	4 NM Holding Pattern
		*1.3 NM to RW21	2600	2600	2800
				205°	025°
				205°	2800
					GP 3.00° TCH 45
CATEGORY	A	B	C	D	
LPV DA		1195- $\frac{7}{8}$	260 (300-%)		
LNAV/VNAV DA		1351-1 $\frac{3}{8}$	416 (500-1%)		
LNAV MDA	1400-1	465 (500-1)	1400-1 $\frac{3}{8}$ 465 (500-1%)		
<b>CIRCLING</b>	1460-1	523 (600-1)	1500-1 $\frac{1}{2}$ 563 (600-1 $\frac{1}{2}$ )	1600-2 663 (700-2)	

MUNCIE, INDIANA  
Amdt 1 05MAR15

40°15'N-85°24'W

DELAWARE COUNTY RGNL (MIE)  
RNAV (GPS) RWY 21

EC-2, 10 JUL 2025 to 07 AUG 2025

EC-2, 10 JUL 2025 to 07 AUG 2025

MUNCIE, INDIANA

AL-5011 (FAA)

25219

WAAS CH <b>53537</b> <b>W21A</b>	APP CRS <b>205°</b>	Rwy Ldg TDZE <b>935</b> Apt Elev <b>937</b>
--	------------------------	---

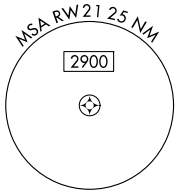
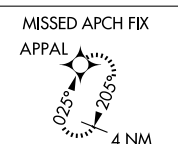
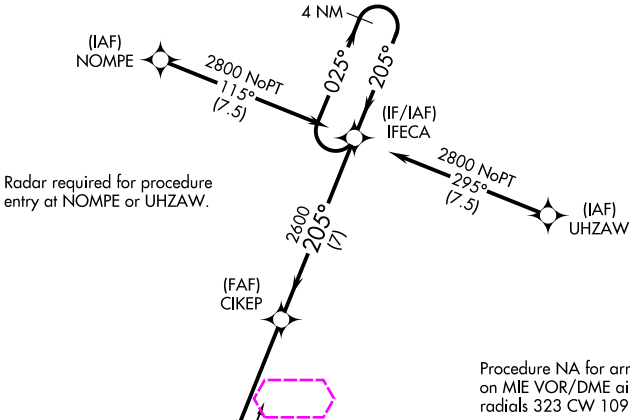
# RNAV (GPS) RWY 21

DELAWARE COUNTY RGNL (MIE)

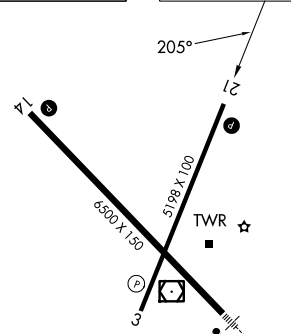
For uncompensated Baro-VNAV systems, LNAV/VNAV NA below -20°C (-4°F) or above 54°C (130°F). DME/DME RNP-0.3 NA. When local altimeter setting not received, use Fort Wayne Intl altimeter setting and increase all DA 121 feet and all MDA 140 feet; increase LPV all Cats and LNAV Cats C/D visibility 3/8 mile and LNAV/VNAV all Cats and Circling Cats C/D visibility 1/2 mile. Baro-VNAV and VDP NA when using Fort Wayne Intl altimeter setting. Helicopter visibility reduction below 3/4 SM NA.

MISSED APPROACH:  
Climb to 2800 direct  
APPAL and hold.

ATIS <b>133.25</b>	INDIANAPOLIS APP CON <b>120.65 317.8</b>	MUNCIE TOWER ★ <b>120.1 (CTAF) 0</b>	GND CON <b>121.9</b>	UNICOM <b>122.95</b>
-----------------------	---	---	-------------------------	-------------------------



ELEV 937	TDZE 935
----------	----------



2800	APPAL	*LNAV only	CIKEP	IFECA	4 NM Holding Pattern
			2600	2600	
		*1.3 NM to RW21			
					GP 3.00° TCH 45
		1.3	3.8 NM	7 NM	
CATEGORY	A	B	C	D	
LPV DA		1195-7/8	260 (300-%)		
LNAV/VNAV DA		1351-13/8	416 (500-1%)		
LNAV MDA	1400-1	465 (500-1)	1400-13/8	465 (500-1%)	
CIRCLING	1460-1	523 (600-1)	1500-11/2	1600-2	663 (700-2)
			563 (600-11/2)		

HIRL Rwy 14-32  
MIRL Rwy 3-21  
REIL Rwy 3, 14 and 21

MUNCIE, INDIANA  
Amdt 1 05MAR15

40°15'N-85°24'W

# RNAV (GPS) RWY 21

EC-2, 07 AUG 2025 to 04 SEP 2025

EC-2, 07 AUG 2025 to 04 SEP 2025