

MUNCIE, INDIANA

AL-5011 (FAA)

25163

LOC I-JNK 109.1	APP CRS 319°	Rwy Ldg TDZE Apt Elev 6500 937 937
---------------------------	------------------------	--

ILS or LOC RWY 32

DELAWARE COUNTY RGNL (MIE)

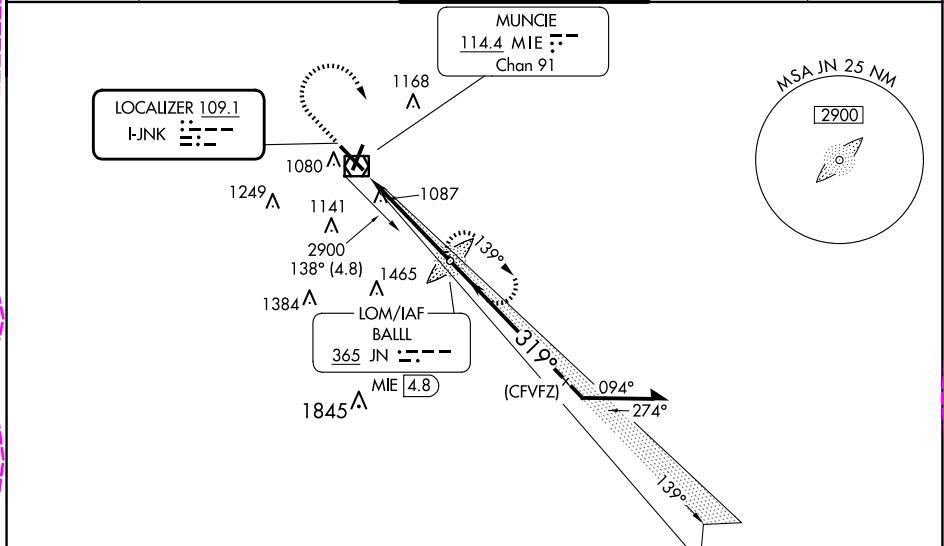
⚠ When control tower closed, except for operations with approved weather reporting use Fort Wayne altimeter setting. For inop MALSR when using Fort Wayne altimeter setting minimums, increase S-ILS 32 visibility to 1 SM. When local altimeter setting not received, use Fort Wayne altimeter setting: increase DA to 1257 feet and visibility all Cats ¼ SM; increase all MDAs 120 feet and visibility Cat C ¾ SM, Cat D 1 ¾ SM. VDP NA when using Fort Wayne altimeter setting.

MALSR

⚠

MISSED APPROACH: Climb to 1460 then climbing right turn to 2900 direct BALL LOM and hold.

ATIS 133.25	INDIANAPOLIS APP CON 120.65 317.8	MUNCIE TOWER ★ 120.1 (CTAF) 0	GND CON 121.9	UNICOM 122.95
-----------------------	---	---	-------------------------	-------------------------



ADF or DME REQUIRED

ELEV 937 **D** TDZE 937

1460 2900 JN

*LOC only.

*MIE 1.4

2462 139° 2900 319°

Remain within 10 NM

GS 3.00° TCH 52

1.2 3.4 NM

CATEGORY	A	B	C	D
S-ILS 32	1137-½ 200 (200-½)			
S-LOC 32	1380-½	443 (500-½)	1380-¾	443 (500-¾)
C CIRCLING	1460-1	523 (600-1)	1500-1½ 563 (600-1½)	1600-2 663 (700-2)

FORT WAYNE ALTIMETER SETTING MINIMUMS

S-ILS 32	1257-¾ 320 (400-¾)			
S-LOC 32	1520-½	583 (600-½)	1520-1½ 583 (600-1½)	1520-2½ 583 (600-2½)
C CIRCLING	1580-1	643 (700-1)	1600-1¾ 663 (700-1¾)	1720-2½ 783 (800-2½)

MUNCIE, INDIANA
Amdt 9E 31DEC20

40°15'N-85°24'W

ILS or LOC RWY 32

DELAWARE COUNTY RGNL (MIE)

MUNCIE, INDIANA

AL-5011 (FAA)

25219

LOC I-JNK 109.1	APP CRS 319°	Rwy Ldg TDZE Apt Elev 6500 937 937
---------------------------	------------------------	--

ILS or LOC RWY 32
DELAWARE COUNTY RGNL (MIE)

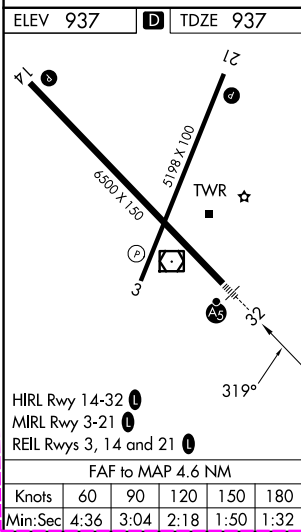
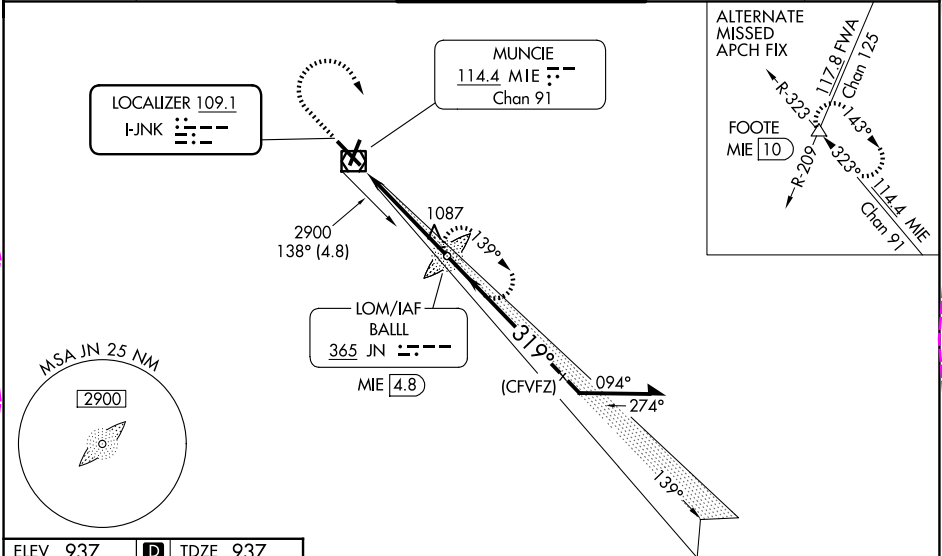
ADF or DME required.

When control tower closed, except for operators with approved weather reporting service, use FWA altimeter setting. For inop ALS, increase S-LOC 32 visibility Cats A and B to 1 SM, Cat C to 1 3/8 SM. For inop ALS when using FWA altimeter setting, increase S-ILS 32 visibility all Cats to 1 SM and increase S-LOC 32 Cats C and D to 1 3/4 SM. When local altimeter setting not received, use FWA altimeter setting and increase S-ILS 32 DA to 1258 feet; increase all MDAs 140 feet; increase S-LOC 32 visibility Cats C and D 3/8 SM and Circling visibility Cats C and D 1/2 SM. VDP NA when using FWA altimeter setting.



MISSED APPROACH: Climb to 1460 then climbing right turn to 2900 direct BALL LOM and hold.

ATIS 133.25	INDIANAPOLIS APP CON 120.65 317.8	MUNCIE TOWER ★ 120.1 (CTAF) 0	GND CON 121.9	UNICOM 122.95
-----------------------	---	---	-------------------------	-------------------------



	1460	2900	JN	
	↑	↷		
			JN LOM BALL MIE 4.8	Remain within 10 NM
			MIE 1.4	2462
			139°	2900
			319°	2500
			GS 3.00° TCH 52	
			1.2	3.4 NM
CATEGORY	A	B	C	D
S-ILS 32		1137-1/2	200 (200-1/2)	
S-LOC 32	1380-1/2	443 (500-1/2)	1380-7/8	443 (500-7/8)
CIRCLING	1460-1	523 (600-1)	1500-1 1/2 563 (600-1 1/2)	1600-2 663 (700-2)

MUNCIE, INDIANA
Amdt 9F 07AUG25

40°15'N-85°24'W

DELAWARE COUNTY RGNL (MIE)
ILS or LOC RWY 32

EC-2, 07 AUG 2025 to 04 SEP 2025

EC-2, 07 AUG 2025 to 04 SEP 2025