

MORRIS, ILLINOIS


AL-5004 (FAA)

24305

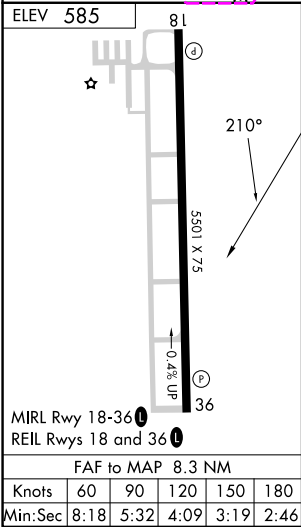
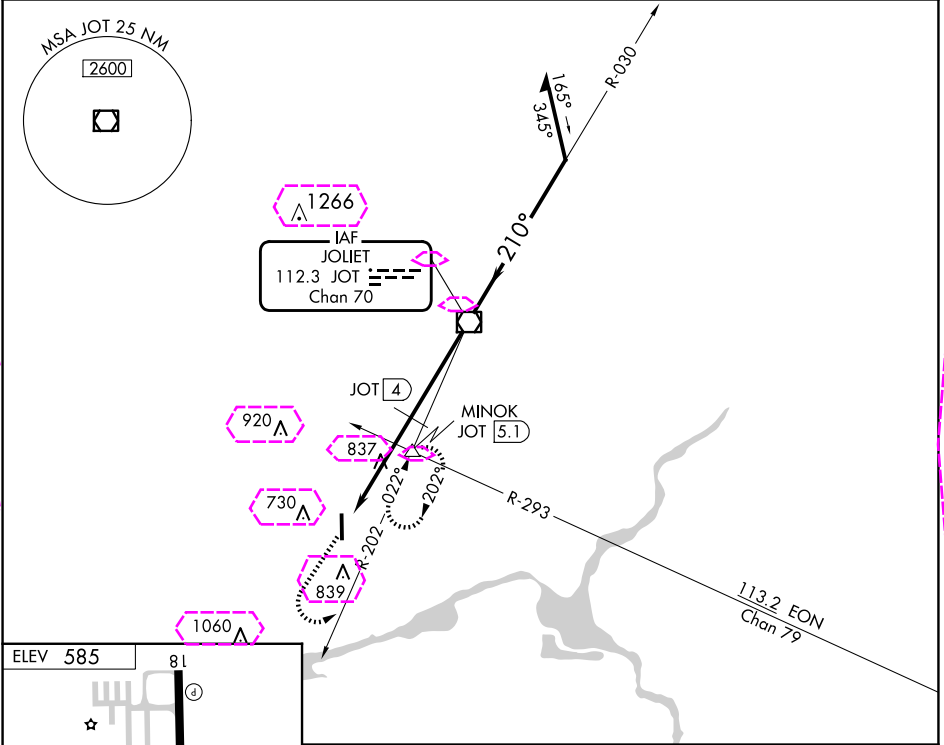
VOR/DME JOT 112.3 Chan 70	APP CRS 210°	Rwy Idg TDZE Apt Elev N/A N/A 585
---	------------------------	---

VOR-A

MORRIS MUNI/JAMES R WASHBURN FLD (C09)

	MISSED APPROACH: Climb to 3000 then left turn on JOT VOR/DME R-202 to MINOK INT/JOT 5.1 DME and hold.
---	--

AWOS-3 118.175	CHICAGO APP CON 119.35 354.075	UNICOM 122.8 (CTAF) 0
--------------------------	--	---------------------------------



3000	JOT R-202	MINOK	JOT VOR/DME	Remain within 10 NM
JOT 8.3	JOT 4	1280	030°	2500
4.3 NM	4 NM			
CATEGORY	A	B	C	D
CIRCLING	1280-1	696 (700-1)	1280-2	NA
			696 (700-2)	
	DME MINIMUMS			
CIRCLING	1100-1	1200-1	1200-2	NA
	516 (600-1)	616 (700-1)	616 (700-2)	

MORRIS, ILLINOIS
Orig-D 19JUL18

MORRIS MUNI/JAMES R WASHBURN FLD (C09)
41°25'N-88°25'W
VOR-A

EC-3, 10 JUL 2025 to 07 AUG 2025

EC-3, 10 JUL 2025 to 07 AUG 2025

MORRIS, ILLINOIS

AL-5004 (FAA)

25219

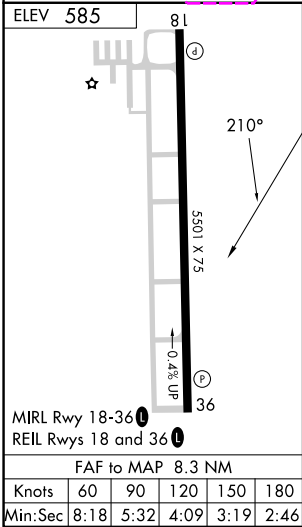
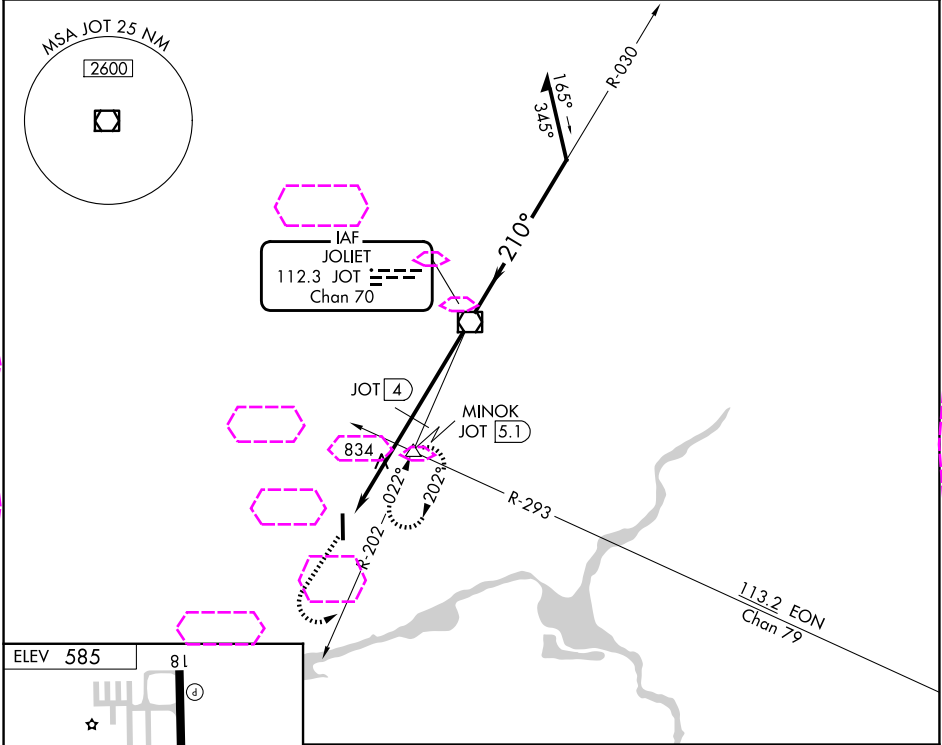
VOR/DME JOT 112.3 Chan 70	APP CRS 210°	Rwy Ldg TDZE Apt Elev N/A N/A 585
---	------------------------	---

VOR-A

MORRIS MUNI/JAMES R WASHBURN FLD (C09)

	MISSED APPROACH: Climb to 3000 then left turn on JOT VOR/DME R-202 to MINOK INT/JOT 5.1 DME and hold.
--	--

AWOS-3 118.175	CHICAGO APP CON 119.35 354.075	UNICOM 122.8 (CTAF) 0
--------------------------	--	---------------------------------



3000	JOT R-202	MINOK	JOT VOR/DME	Remain within 10 NM
JOT 8.3	JOT 4	1280	030°	2500
4.3 NM	4 NM			
CATEGORY	A	B	C	D
CIRCLING	1280-1	696 (700-1)	1280-2	NA
			696 (700-2)	
	DME MINIMUMS			
CIRCLING	1100-1	1200-1	1200-2	NA
	516 (600-1)	616 (700-1)	616 (700-2)	

EC-3, 07 AUG 2025 to 04 SEP 2025

EC-3, 07 AUG 2025 to 04 SEP 2025

MORRIS, ILLINOIS
Orig-D 19JUL18

MORRIS MUNI/JAMES R WASHBURN FLD (C09)
41°25'N-88°25'W
VOR-A