

MORRIS, ILLINOIS

AL-5004 (FAA)

24305

APP CRS	Rwy Idg	5501
002°	TDZE	570
	Apt Elev	585

RNAV (GPS) RWY 36

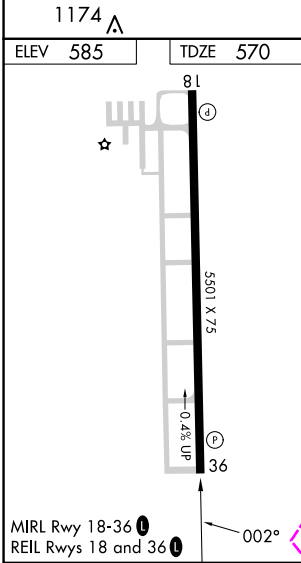
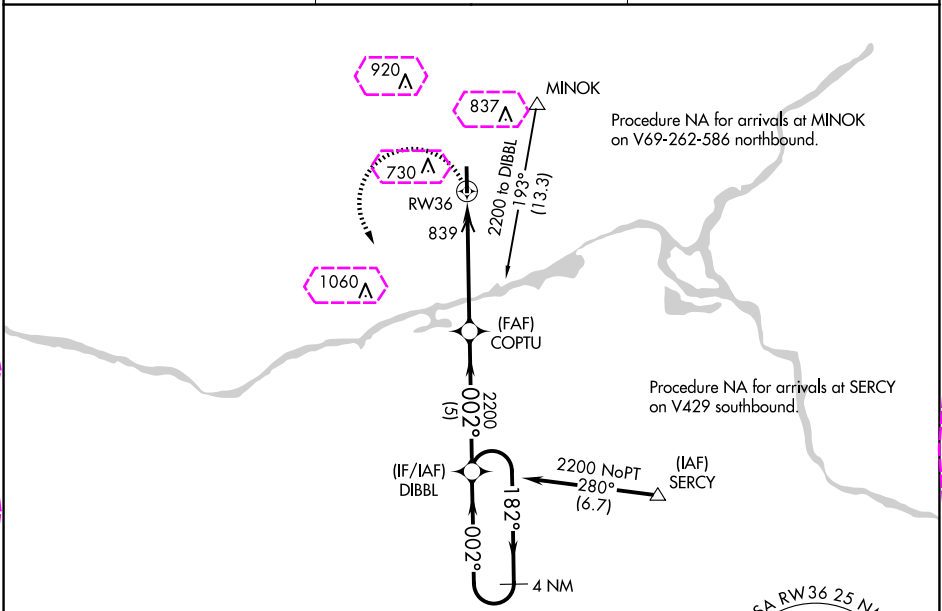
MORRIS MUNI/JAMES R WASHBURN FLD (C09)

▼ Night landing: Rwy 18 NA. DME/DME RNP-0.3 NA. VDP NA with Joliet altimeter setting. When local altimeter setting not received, use Joliet altimeter setting and increase all MDA 40 feet, and increase LNAV and Circling Cat C visibility $\frac{3}{8}$ mile.

▲

MISSED APPROACH: Climbing left turn to 2200 direct DIBBL and hold.

AWOS-3 118.175	CHICAGO APP CON 119.35 354.075	UNICOM 122.8 (CTAF) 0
-------------------	-----------------------------------	---------------------------------



2200	DIBBL	COPTU	DIBBL	4 NM Holding Pattern
CATEGORY	A	B	C	D
LNAV MDA	1100-1	530 (600-1)	1100-1½ 530 (600-1½)	NA
CIRCLING	1100-1 515 (600-1)	1140-1 555 (600-1)	1140-1½ 555 (600-1½)	NA

MORRIS, ILLINOIS
Amdt 2 22JUN17

MORRIS MUNI/JAMES R WASHBURN FLD (C09)
41°25'N-88°25'W
RNAV (GPS) RWY 36

EC-3, 10 JUL 2025 to 07 AUG 2025

EC-3, 10 JUL 2025 to 07 AUG 2025

MORRIS, ILLINOIS

AL-5004 (FAA)

25219

APP CRS	Rwy Ldg	5501
002°	TDZE	570
	Apt Elev	585

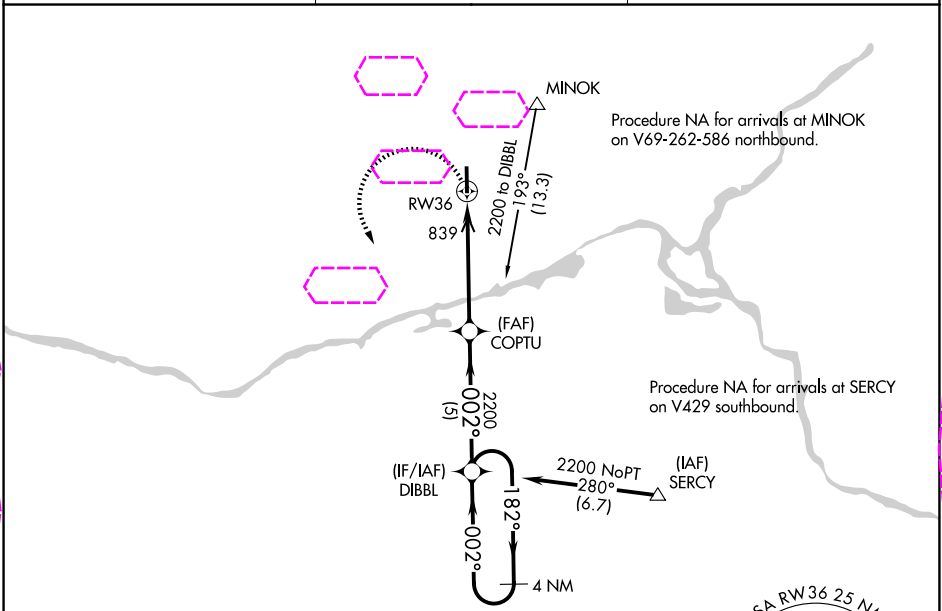
RNAV (GPS) RWY 36

MORRIS MUNI/JAMES R WASHBURN FLD (C09)

▼ Night landing: Rwy 18 NA. DME/DME RNP-0.3 NA. VDP NA with Joliet altimeter setting. When local altimeter setting not received, use Joliet altimeter setting and increase all MDA 40 feet, and increase LNAV and Circling Cat C visibility $\frac{3}{8}$ mile.

▲ MISSED APPROACH: Climbing left turn to 2200 direct DIBBL and hold.

AWOS-3 118.175	CHICAGO APP CON 119.35 354.075	UNICOM 122.8 (CTAF) 0
-------------------	-----------------------------------	---------------------------------



EC-3, 07 AUG 2025 to 04 SEP 2025

EC-3, 07 AUG 2025 to 04 SEP 2025

MORRIS, ILLINOIS
Amdt 2 22JUN17

MORRIS MUNI/JAMES R WASHBURN FLD (C09)
41°25'N-88°25'W
RNAV (GPS) RWY 36