

MORRIS, ILLINOIS

AL-5004 (FAA)

25163

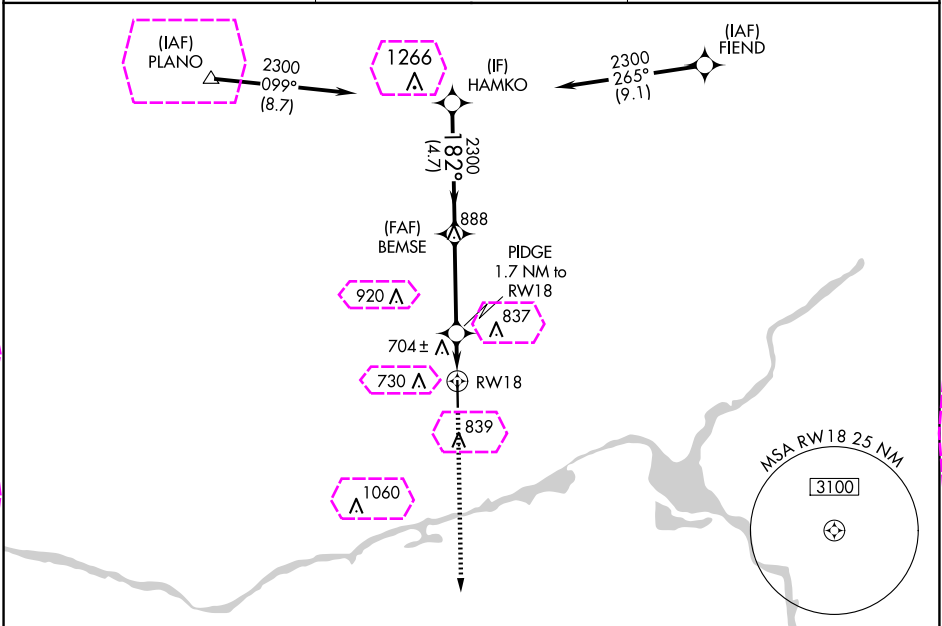
APP CRS	Rwy Ldg	5501
182°	TDZE	585
	Apt Elev	585

RNAV (GPS) RWY 18

MORRIS MUNI/JAMES R WASHBURN FLD (C09)

RNP APCH - GPS.	<p>▼ Rwy 18 helicopter visibility reduction below ¾ SM NA. VDP NA when using JOT altimeter setting. When local altimeter setting not received, use JOT altimeter setting and increase all MDAs 40 feet and LNAV visibility Cat C ½ SM.</p> <p>▲ MISSED APPROACH: Climb to 2200 direct DIBBL and hold.</p>
-----------------	---

AWOS-3 118.175	CHICAGO APP CON 119.35 354.075	UNICOM 122.8 (CTAF) 0
-------------------	-----------------------------------	--------------------------



	ELEV 585	TDZE 585
	182°	81
	5501 X 75	36
	0.4% UP	
	MIRL Rwy 18-36 0	REIL Rwy 18 and 36 1

	HAMKO	BEMSE	PIDGE 1.7 NM to RW18	2200	DIBBL
	2300	2300	1160		
	4.7 NM	3.6 NM	0.7 NM	1 NM	
CATEGORY	A	B	C	D	
LNAV MDA	960-1	375 (400-1)		NA	
C CIRCLING	1020-1 435 (500-1)	1140-1 555 (600-1)	1140-1½ 555 (600-1½)	NA	

MORRIS, ILLINOIS
Amdt 2 12JUN25

MORRIS MUNI/JAMES R WASHBURN FLD (C09)

41°25'N-88°25'W

RNAV (GPS) RWY 18

EC-3, 10 JUL 2025 to 07 AUG 2025

EC-3, 10 JUL 2025 to 07 AUG 2025

APP CRS 182°	Rwy Ldg TDZE Apt Elev	5501 585 585
------------------------	-----------------------------	---

RNAV (GPS) RWY 18

MORRIS MUNI/JAMES R WASHBURN FLD (C09)

RNP APCH - GPS.

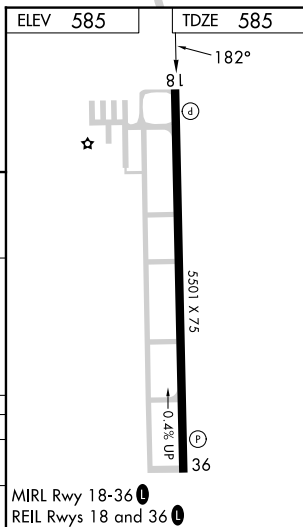
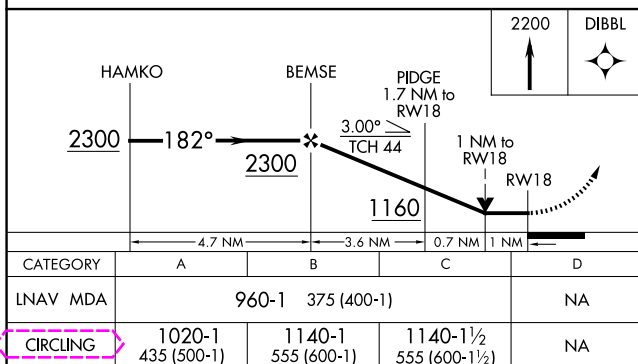
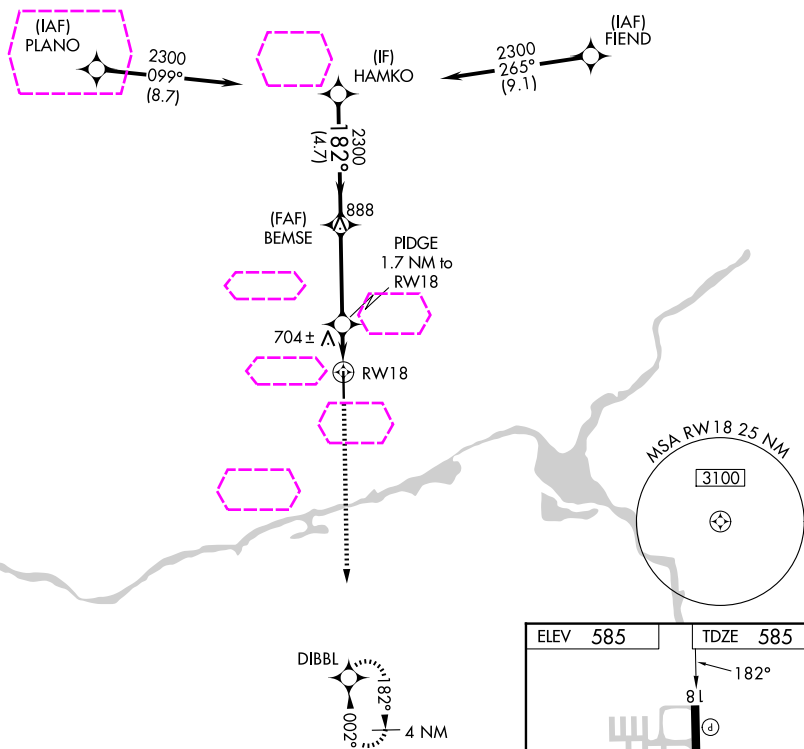
T Rwy 18 helicopter visibility reduction below $\frac{3}{4}$ SM NA. VDP NA when using JOT
A altimeter setting. When local altimeter setting not received, use JOT altimeter setting
and increase all MDAs 40 feet and LNAV visibility Cat C $\frac{1}{8}$ SM.

MISSED APPROACH: Climb to 2200 direct DIBBL and hold.

AWOS-3
118.175

CHICAGO APP CON
119.35 354.075

UNICOM
122.8 (CTAF) **L**



MORRIS, ILLINOIS
Amdt 2 12JUN25

MORRIS MUNI/JAMES R WASHBURN FLD (C09)

41°25'N-88°25'W

RNAV (GPS) RWY 18

EC-3, 07 AUG 2025 to 04 SEP 2025

EC-3, 07 AUG 2025 to 04 SEP 2025