



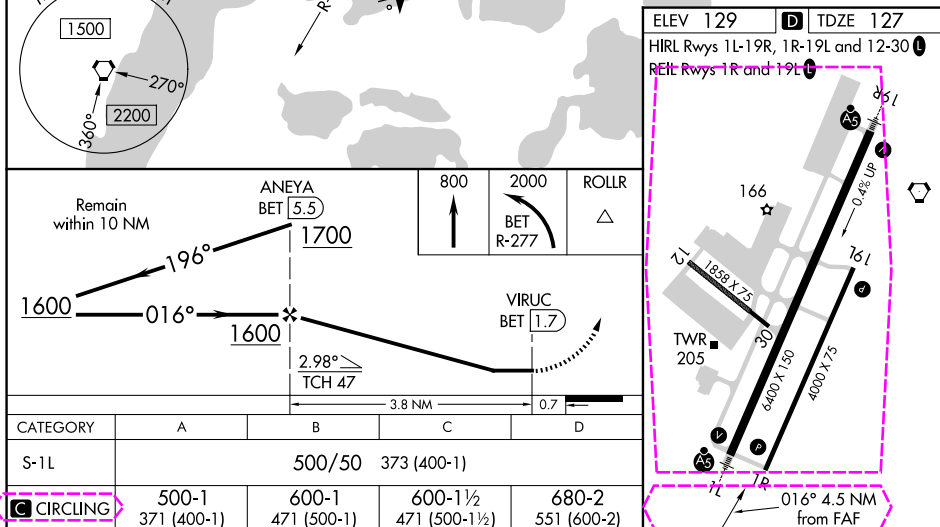
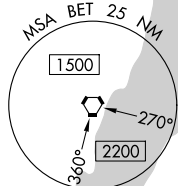
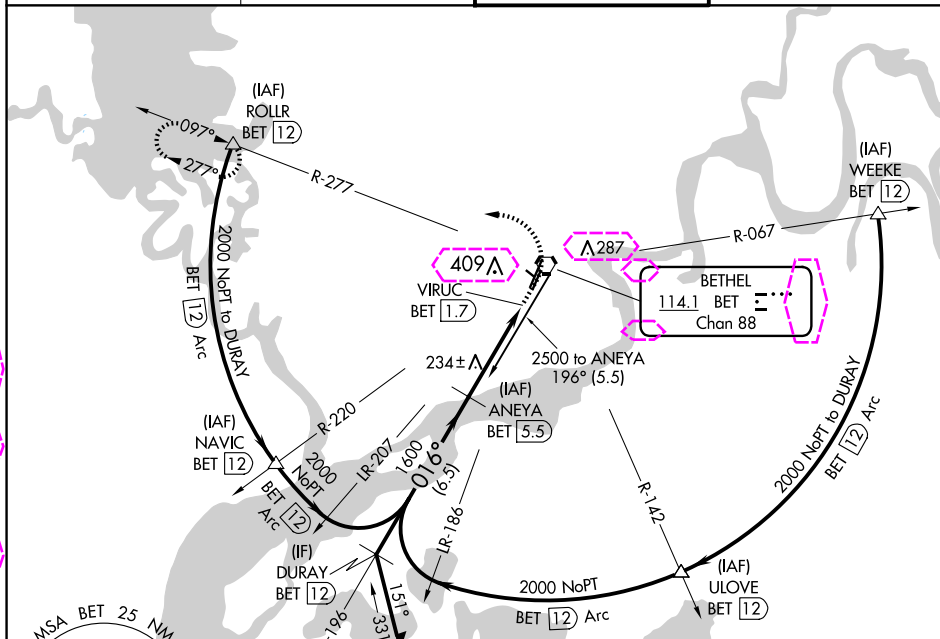


BETHEL, ALASKA

VORTAC BET <u>114.1</u> Chan 88	APP CRS 016°	Rwy Idg 6400 TDZE 127 App Elev 129
---------------------------------------	-----------------	--

VOR RWY 1L  
BETHEL (BET) (PABE)

DME required.		MALSR	MISSED APPROACH: Climb to 800 then climbing left turn to 2000 on BET VORTAC R-277 to ROLL/12 DME and hold.
  Circling NA west of Rwy 1L-19R. For inop ALS, increase S-1L Cat C/D visibility to RVR 5500.		 	
ATIS <b>119.8</b>	ANCHORAGE CENTER <b>125.2 372.0</b>	BETHEL TOWER ★ <b>118.7 (CTAF) 0</b>	GND CON <b>121.7</b>



BETHEL, ALASKA  
Amdt 2D 10SEP20

60°47'N-161°50'W

BETHEL (BET)(PABE)  
VOR RWY 1L

AK, 12 JUN 2025 to 07 AUG 2025

AK, 12 JUN 2025 to 07 AUG 2025

BETHEL, ALASKA

AL-5001 (FAA)

25219

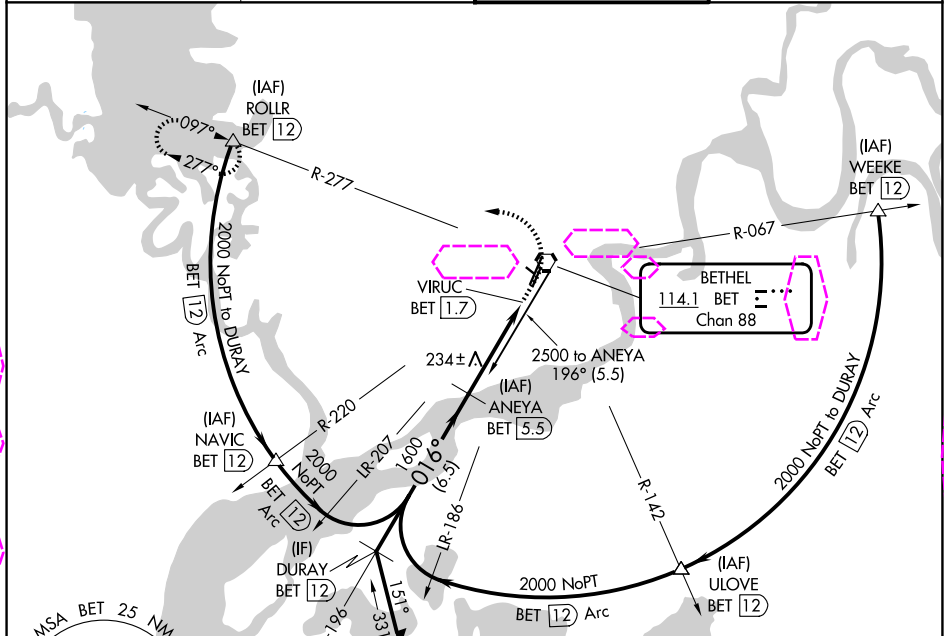
VORTAC BET	APP CRS	Rwy Ldg	6400
114.1	016°	TDZE	127
Chan 88		Apt Elev	129

# VOR RWY 1L

BETHEL (BET)(PABE)

DME required.	MALSR	MISSED APPROACH: Climb to 800 then climbing left turn to 2000 on BET VORTAC R-277 to ROLLR/12 DME and hold.
Circling NA west of Rwy 1L-19R. For inop ALS, increase S-1L Cat C/D visibility to RVR 5500.		

ATIS 119.8	ANCHORAGE CENTER 125.2 372.0	BETHEL TOWER ★ 118.7 (CTAF) 0	GND CON 121.7
---------------	---------------------------------	----------------------------------	------------------



CATEGORY	A	B	C	D
S-1L	500/50 373 (400-1)			
CIRCLING	500-1 371 (400-1)	600-1 471 (500-1)	600-1½ 471 (500-1½)	680-2 551 (600-2)

ELEV 129 D TDZE 127

HIRL Rws 1L-19R, 1R-19L and 12-30

REIL Rws 1R and 19L

12.59 x 75

161

18.59 x 75

30

4000 x 150

4000 x 75

TWR

AS

AS

12

19

1L

1R

016°

BETHEL, ALASKA  
Amdt 2D 10SEP20

60°47'N-161°50'W

BETHEL (BET)(PABE)  
VOR RWY 1L

AK, 07 AUG 2025 to 02 OCT 2025

AK, 07 AUG 2025 to 02 OCT 2025