

BETHEL, ALASKA

AL-5001 (FAA)


22139

WAAS CH <b>42707</b> <b>W01A</b>	APP CRS <b>012°</b>	Rwy Idg <b>6400</b> TDZE <b>127</b> Apt Elev <b>129</b>
--	------------------------	---

**RNAV (GPS) RWY 1L**  
BETHEL (BET)(PABE)

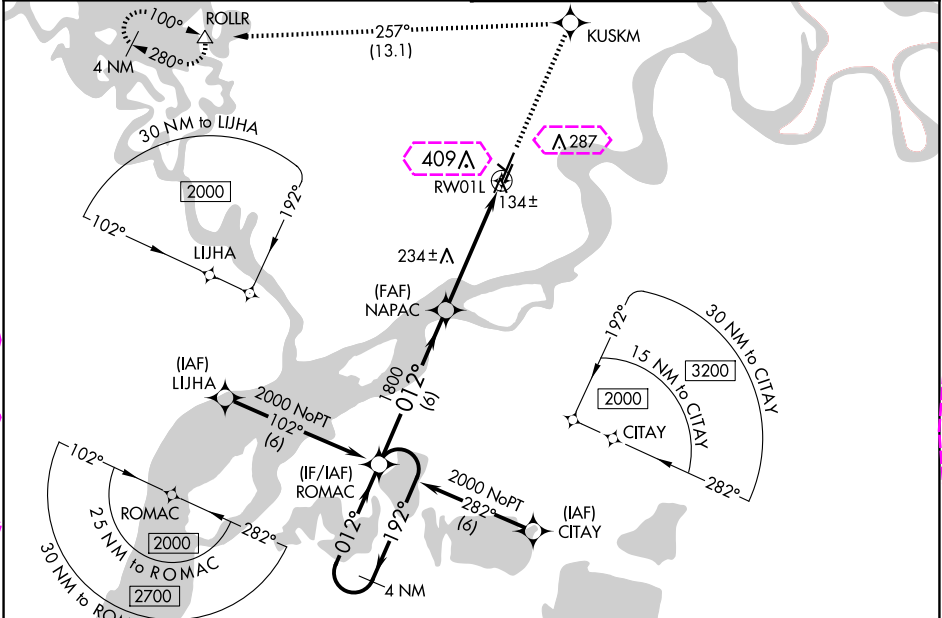
▼ For uncompensated Baro-VNAV systems, LNAV/VNAV NA below -25°C (-13°F) or above 54°C (130°F).  
Circling NA west of Rwy 1L-19R. DME/DME RNP-0.3 NA.  
For inop ALS, increase LNAV Cat C/D visibility to RVR 6000.

MALSR



MISSED APPROACH: Climb to 2000 direct KUSKM and left turn on track 257° to ROLLR and hold.

ATIS <b>119.8</b>	ANCHORAGE CENTER <b>125.2 372.0</b>	BETHEL TOWER ★ <b>118.7 (CTAF) 0</b>	GND CON <b>121.7</b>
----------------------	--	---	-------------------------



VGSI and RNAV glidepath not coincident (VGSI Angle 3.00/TCH 39).

4 NM Holding Pattern ROMAC

2000 ← 192° / 012° →

GP 3.00° TCH 47

6 NM | 3.9 NM | 1.1 NM

NAPAC 1800

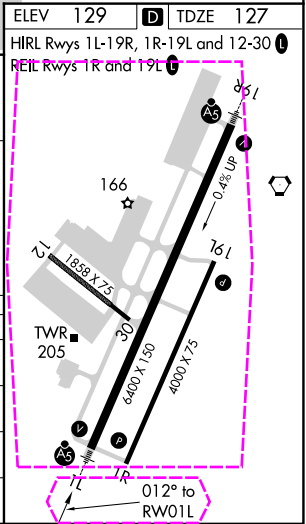
KUSKM tr 257°

ROLLR

\*LNAV only

1.1 NM to RW01L

CATEGORY	A	B	C	D
LPV DA	377/24 250 (300-½)			
LNAV/VNAV DA	555/50 428 (500-1)			
LNAV MDA	500/24	373 (400-½)	500/50	373 (400-1)
CIRCLING	500-1 371 (400-1)	600-1 471 (500-1)	600-1½ 471 (500-1½)	680-2 551 (600-2)



BETHEL, ALASKA  
Amdt 1C 22JUN17

60°47'N-161°50'W

BETHEL (BET)(PABE)  
**RNAV (GPS) RWY 1L**

AK, 12 JUN 2025 to 07 AUG 2025

AK, 12 JUN 2025 to 07 AUG 2025

