

WAAS CH 70507 W19A	APP CRS 193°	Rwy Idg 6400 TDZE 120 Apt Elev 129
--	------------------------	---

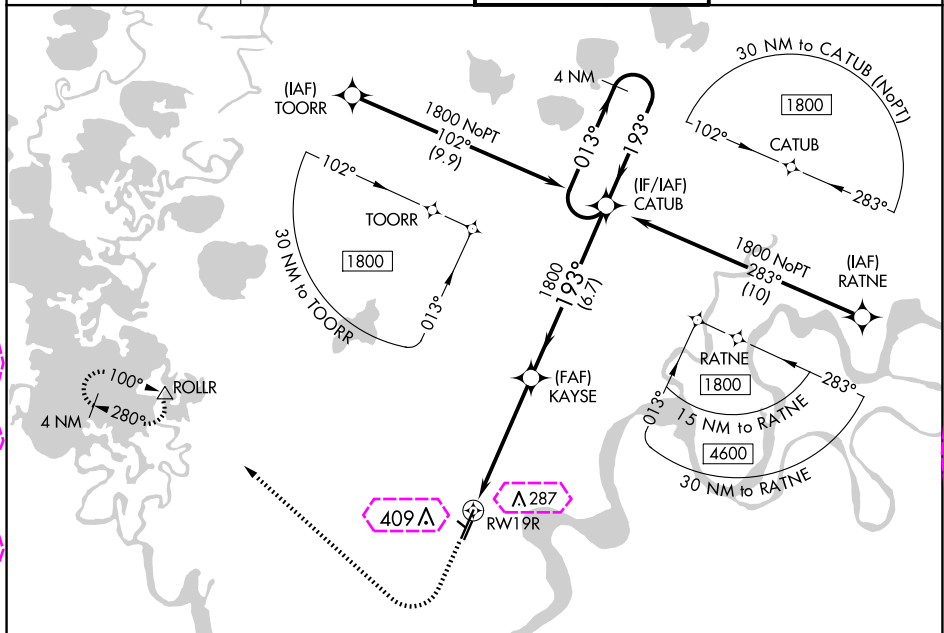
RNAV (GPS) RWY 19R
BETHEL (BET) (PABE)

T For uncompensated Baro-VNAV systems, LNAV/VNAV NA below -25°C (-13°F) or above 54°C (130°F). Circling NA west of Rwy 1L-19R. DME/DME RNP-0.3 NA.



MISSED APPROACH: Climb to 1700 then climbing right turn to 2000 direct ROLLR and hold

ATIS 119.8	ANCHORAGE CENTER 125.2 372.0	BETHEL TOWER ★ 118.7 (CTAF) 0	GND CON 121.7
----------------------	--	---	-------------------------

[illegible]

1700 ↑	2000 ↗	ROLLR △				
* LNAV only			* 1.3 NM to RW19R RW19R 1.3 NM 3.9 NM 6.7 NM KAYSE CATUB 4 NM Holding Pattern 1800 193° 013° 1800 193° GP 3.00° TCH 52			
CATEGORY	A	B	C	D		
LPV DA	320/24 200 (200-½)					
LNAV/VNAV DA	479/40 359 (400-¾)					
LNAV MDA	560/24 440 (500-½)		560/45 440 (500-¾)			
C CIRCLING	560-1 431 (500-1)	600-1 471 (500-1)	600-1½ 471 (500-1½)	680-2 551 (600-2)		

BETHEL, ALASKA

AL-5001 (FAA)

25219

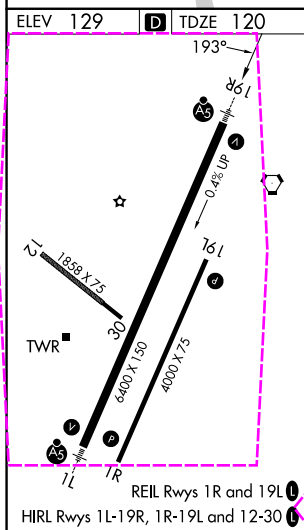
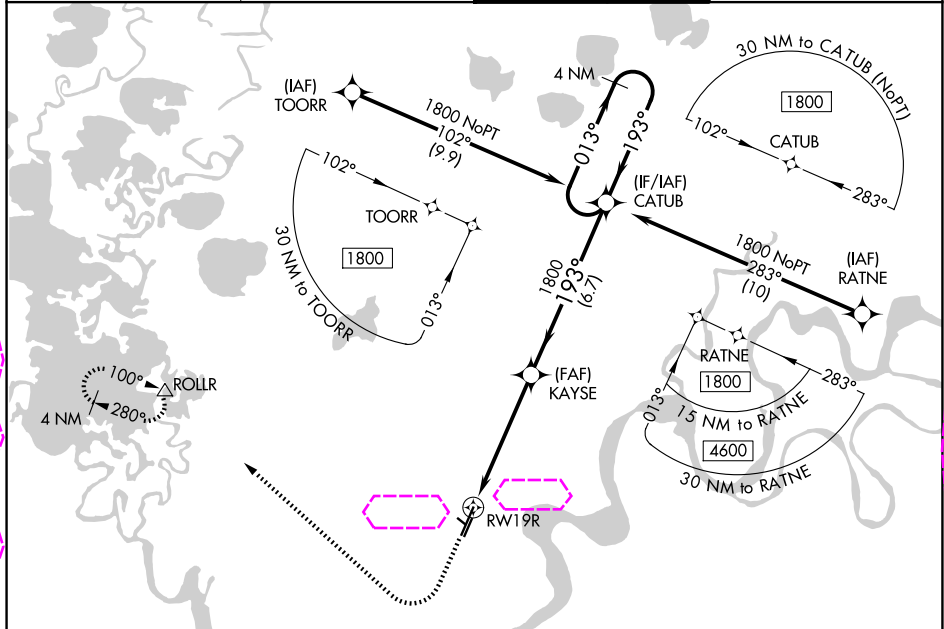
WAAS CH 70507 W19A	APP CRS 193°	Rwy Ldg 6400 TDZE 120 Apt Elev 129
--	------------------------	---

RNAV (GPS) RWY 19R

BETHEL (BET)(PABE)

▽ For uncompensated Baro-VNAV systems, LNAV/VNAV NA below -25°C (-13°F) or above 54°C (130°F). Circling NA west of Rwy 1L-19R. DME/DME RNP 0.3 NA.	MALSR 	MISSED APPROACH: Climb to 1700 then climbing right turn to 2000 direct ROLLR and hold.
---	-----------	--

ATIS 119.8	ANCHORAGE CENTER 125.2 372.0	BETHEL TOWER ★ 118.7 (CTAF) 0	GND CON 121.7
----------------------	--	---	-------------------------



1700	2000	ROLLR		
* LNAV only				
CATEGORY	A	B	C	D
LPV DA	320/24		200 (200-½)	
LNAV/VNAV DA	479/40		359 (400-¾)	
LNAV MDA	560/24		440 (500-½)	560/45 440 (500-¾)
CIRCLING	560-1 431 (500-1)	600-1 471 (500-1)	600-1½ 471 (500-1½)	680-2 551 (600-2)

BETHEL, ALASKA
Amdt 2D 22JUN17

60°47'N-161°50'W

RNAV (GPS) RWY 19R

BETHEL (BET)(PABE)

AK, 07 AUG 2025 to 02 OCT 2025

AK, 07 AUG 2025 to 02 OCT 2025