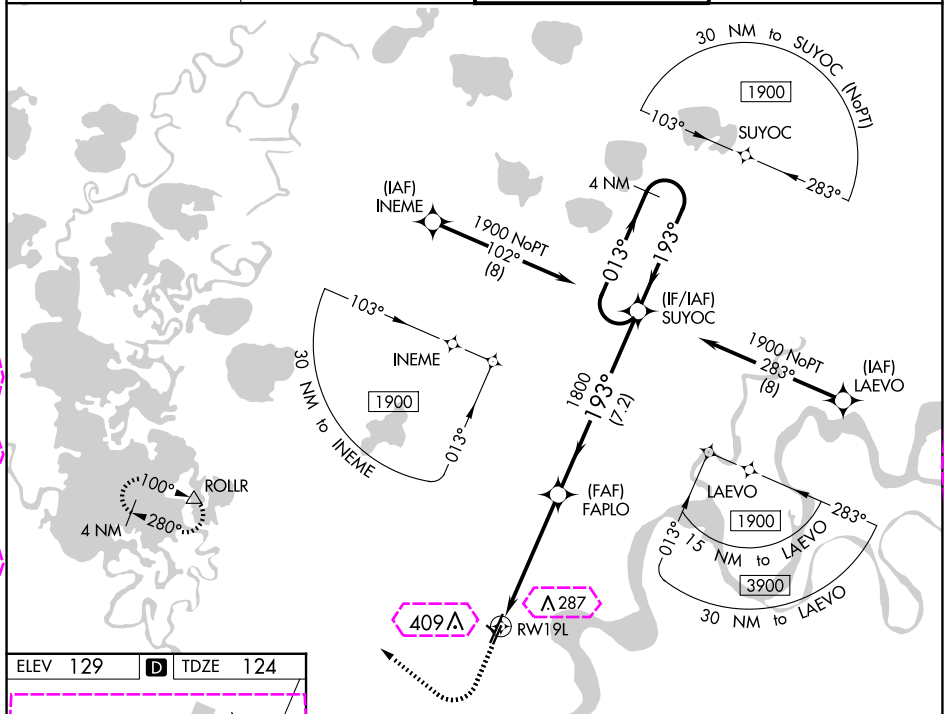


WAAS CH <b>99440</b> <b>W19B</b>	APP CRS <b>193°</b>	Rwy Idg <b>4000</b> TDZE <b>124</b> Apt Elev <b>129</b>
--	------------------------	---

RNAV (GPS) RWY 19L  
BETHEL (BET) (PABE)

<p><b>T</b> For uncompensated Baro-VNAV systems, LNAV/VNAV NA below -19°C (-2°F) or above 54°C (130°F). Circling NA west of Rwy 1L-19R. DME/DME RNP-0.3 NA.</p>	<p>MISSED APPROACH: Climb to 600 then climbing right turn to 2000 direct ROLLR and hold.</p>
---	--

<p>ATIS <b>119.8</b></p>	<p>ANCHORAGE CENTER <b>125.2 372.0</b></p>	<p>BETHEL TOWER ★ <b>118.7</b> (CTAF) <b>0</b></p>	<p>GND CON <b>121.7</b></p>
------------------------------	--	--	---------------------------------

[illegible]

BETHEL, ALASKA

Amdt 1 22JUN17

BETHEL (BET)(PABE)

60°47'N-161°50'W

## RNAV (GPS) RWY 19L

AK, 12 JUN 2025 to 07 AUG 2025

AK, 12 JUN 2025 to 07 AUG 2025

WAAS CH <b>99440</b> <b>W19B</b>	APP CRS <b>193°</b>	Rwy Ldg <b>4000</b> TDZE <b>124</b> Apt Elev <b>129</b>
--	------------------------	---

RNAV (GPS) RWY 19L  
BETHEL (BET) (PABE)

<p>For uncompensated Baro-VNAV systems, LNAV/VNAV NA below -1.9°C (-2°F) or above 54°C (130°F). Circling NA west of Rwy 1L-19R. DME/DME RNP-0.3 NA.</p>	<p>MISSED APPROACH: Climb to 600 then climbing right turn to 2000 direct ROLLR and hold.</p>
---	--

ATIS <b>119.8</b>	ANCHORAGE CENTER <b>125.2 372.0</b>	BETHEL TOWER ★ <b>118.7</b> (CTAF) <b>0</b>	GND CON <b>121.7</b>
----------------------	--	--	-------------------------

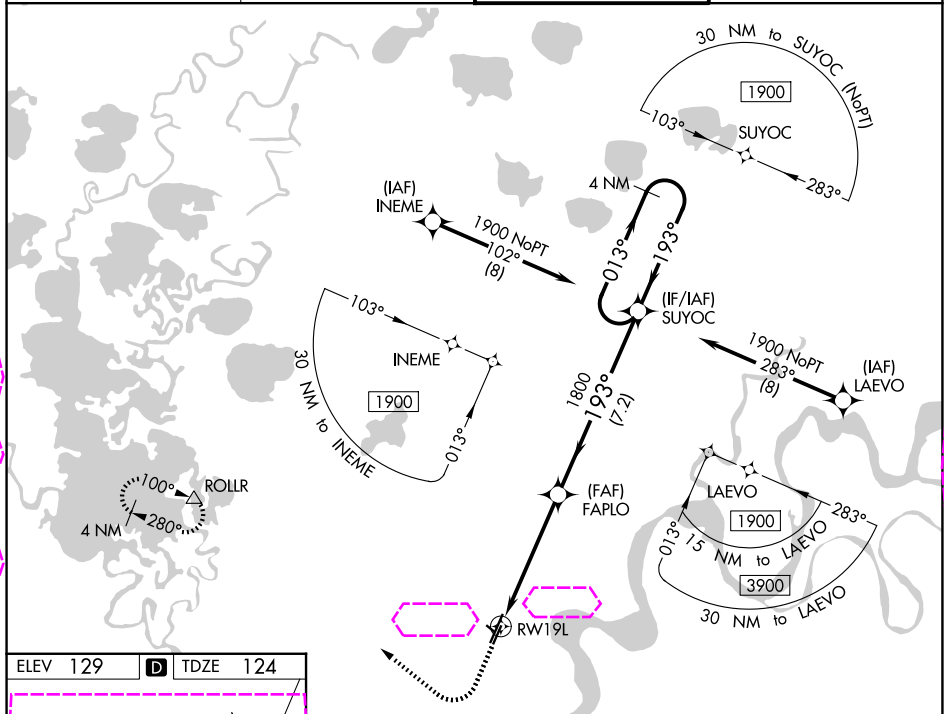


Diagram illustrating the RW19L approach procedure. Key elements include:

- Runway: 1835 X 75, 0.4% Up gradient.
- Approach Path: 193° heading, 1.1 NM to RW19L, 4 NM to FAPLO, 7.2 NM to 1900 ft.
- Altitudes: 1800 ft (FAPLO), 1900 ft (4 NM Holding Pattern).
- Visual Aids: TWR, REIL Rwy 1R and 19L, HIRL Rwy 1L-19R, 1R-19L and 12-30.

Category	A	B	C	D
LPV DA		374-3/4	250 (300-3/4)	
LNAV/VNAV DA		374-3/4	250 (300-3/4)	
LNAV MDA		500-1	376 (400-1)	
CIRCLING	500-1 371 (400-1)	600-1 471 (500-1)	600-1 1/2 471 (500-1 1/2)	680-2 551 (600-2)

BETHEL, ALASKA

Amdt 1 22JUN17

BETHEL (BET)(PABE)

60°47'N-161°50'W

## RNAV (GPS) RWY 19L

AK, 07 AUG 2025 to 02 OCT 2025

AK, 07 AUG 2025 to 02 OCT 2025