

22139

LOC/DME I-BET <u>111.5</u> Chan 52	APP CRS 192°	Rwy Idg 6400 TDZE 120 Apt Elev 129
--	------------------------	---

ILS Z or LOC Z RWY 19R
BETHEL (BET)(PABE)

DME required.

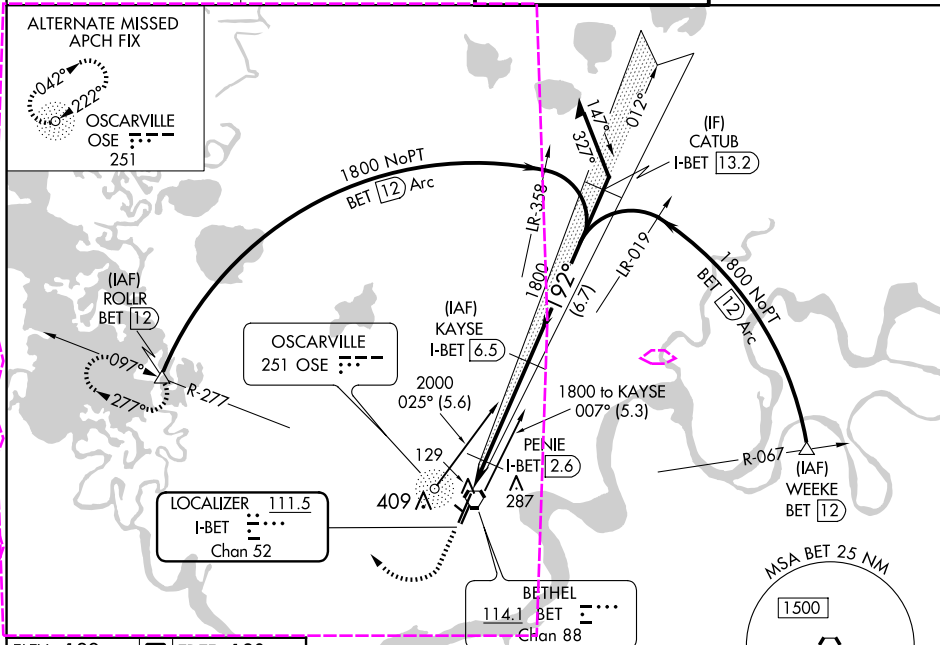
T Circling NA west of Rwy 11-19R.
A For inop ALS, increase S-LOC Cat C/D visibility to RVR 4500.
RVR 1800 authorized with the use of FD or AP or HUD to DA.

MALSR

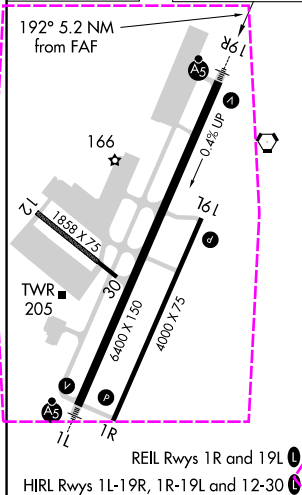




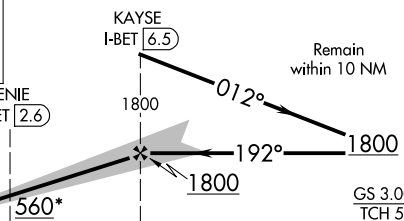

MISSED APPROACH: Climb to 700 then climbing right turn to 2000 on BET VORTAC R-277 to ROLLR/BET VORTAC 12 DME and hold.

ATIS 119.8	ANCHORAGE CENTER 125.2 372.0	BETHEL TOWER ★ 118.7 (CTAF) 0	GND CON 121.7
----------------------	--	--	-------------------------



ELEV 129	D	TDZE 120
----------	----------	----------



700 ↑	2000  BET R-277	ROLLR 						
*LOC only.			I-BET 1.3	*I-BET 2.1	PENIE I-BET 2.6	1800	1800	GS 3.00° TCH 52
			0.8	0.5	3.9 NM			
CATEGORY	A		B		C		D	
S-ILS 19R#	320/24 200 (200-½)							
S-LOC 19R	400/24 280 (300-½)							
 CIRCLING	500-1 371 (400-1)		600-1 471 (500-1)		600-1½ 471 (500-1½)		680-2 551 (600-2)	

BETHEL, ALASKA

Amdt 7G 10SEP20

60°47'N-161°50'W

BETHEL (BET)(PABE)

ILS Z or LOC Z RWY 19R

AK, 12 JUN 2025 to 07 AUG 2025

LOC/DME I-BET <u>111.5</u> Chan 52	APP CRS 192°	Rwy Ldg TDZE Apt Elev	6400 120 129
--	------------------------	-----------------------------	---

ILS Z or LOC Z RWY 19R
BETHEL (BET)(PABE)

DME required.

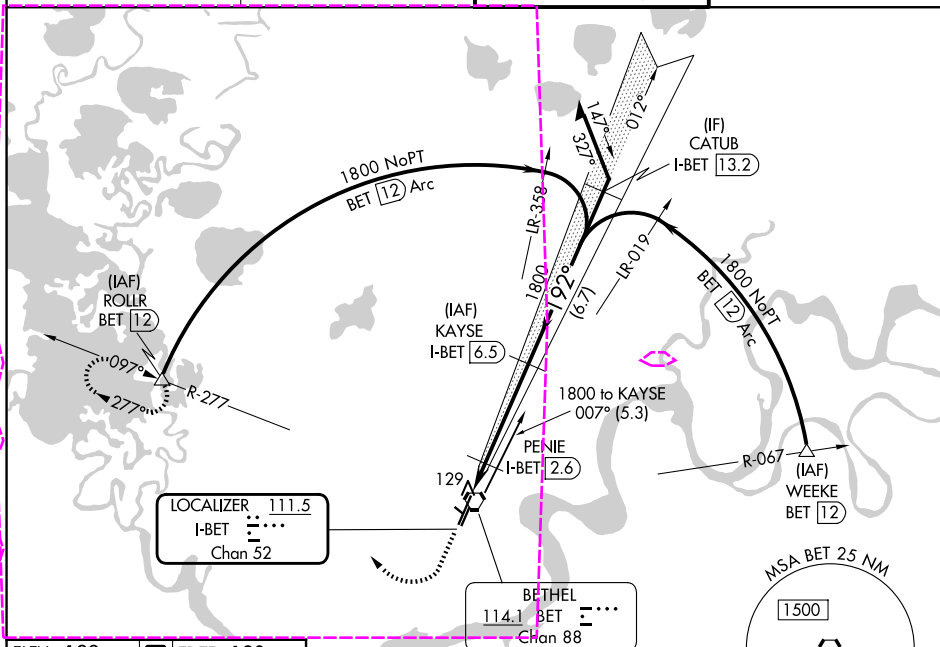
T Circling NA west of Rwy 11-19R.
A For inop ALS, increase S-LOC Cat C/D visibility to RVR 4500.
RVR 1800 authorized with the use of FD or AP or HUD to DA.

MALSR

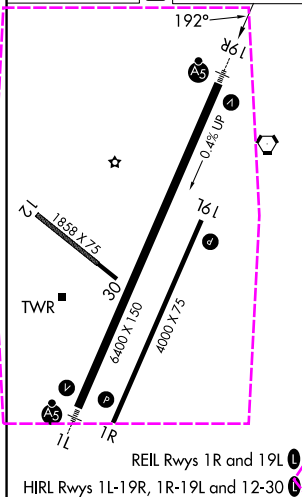


MISSED APPROACH: Climb to 700 then climbing right turn to 2000 on BET VORTAC R-277 to ROLLR/BET VORTAC 12 DME and hold.

ATIS 119.8	ANCHORAGE CENTER 125.2 372.0	BETHEL TOWER ★ 118.7 (CTAF) 0	GND CON 121.7
----------------------	--	--	-------------------------



ELEV 129	D	TDZE 120
----------	----------	----------



700 ↑	2000 BET R-277	ROLLR △		
*LOC only.	PENIE I-BET 2.6	KAYSE I-BET 6.5		
I-BET 1.3	*I-BET 2.1	1800		
0.8	0.5	3.9 NM		
560*	1800	1800		
012°	192°	GS 3.00° TCH 52		
Remain within 10 NM				
CATEGORY	A	B	C	D
S-ILS 19R#	320/24 200 (200-½)			
S-LOC 19R	400/24 280 (300-½)			
CIRCLING	500-1 371 (400-1)	600-1 471 (500-1)	600-1½ 471 (500-1½)	680-2 551 (600-2)

BETHEL, ALASKA

Amdt 7H 07AUG25

60°47'N-161°50'W

BETHEL (BET)(PABE)

ILS Z or LOC Z RWY 19R

AK, 07 AUG 2025 to 02 OCT 2025