

BETHEL, ALASKA

AL-5001 (FAA)

22139

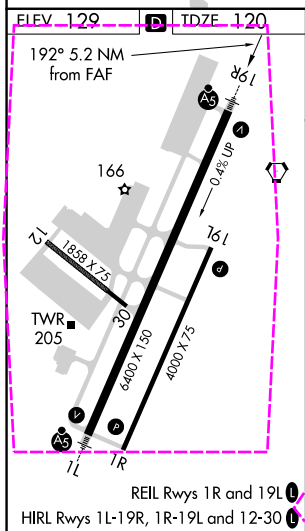
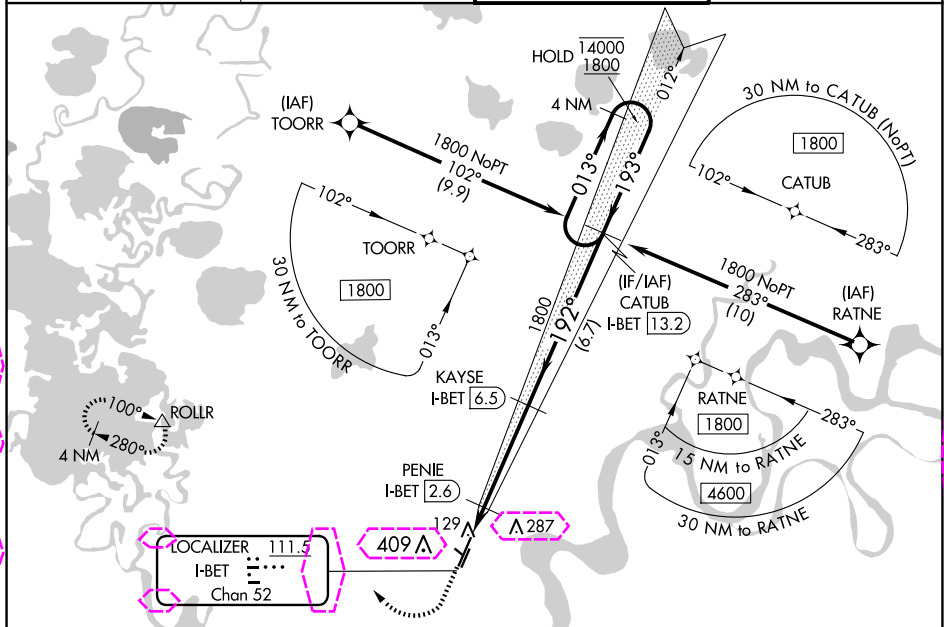
LOC/DME I-BET	APP CRS	Rwy Idg	6400
111.5	192°	TDZE	120
Chan 52		Apt Elev	129

ILS Y or LOC Y RWY 19R

BETHEL (BET)(PABE)

DME required. RNAV 1-GPS required.	MALSR	MISSED APPROACH: Climb to 1700 then climbing right turn to 2000 direct ROLLR and hold.
▼ Circling NA west of Rwy 1L-19R. For inop ALS, increase S-LOC-19R Cat C/D visibility to RVR 4000. # RVR 1800 authorized with use of FD or AP or HUD to DA.		

ATIS 119.8	ANCHORAGE CENTER 125.2 372.0	BETHEL TOWER ★ 118.7 (CTAF) 0	GND CON 121.7
---------------	---------------------------------	----------------------------------	------------------



1700	2000	ROLLR	KAYSE I-BET (6.5)	CATUB I-BET (13.2)	4 NM Holding Pattern
*LOC only	PENIE I-BET (2.6)	1800	192°	013°	14000
I-BET (1.3)	*I-BET (2)	560*	1800	193°	1800
0.7	0.6	3.9 NM	6.7 NM		GS 3.00° TCH 52
CATEGORY	A	B	C	D	
S-ILS 19R#	320/24	200 (200-½)			
S-LOC 19R	380/24	260 (300-½)			
REIL Rws 1R and 19L	500-1	600-1	600-1½	680-2	
HIRL Rws 1L-19R, 1R-19L and 12-30	371 (400-1)	471 (500-1)	471 (500-1½)	551 (600-2)	

BETHEL, ALASKA
Orig-E 10SEP20

60°47'N-161°50'W

BETHEL (BET)(PABE)

ILS Y or LOC Y RWY 19R

AK, 12 JUN 2025 to 07 AUG 2025

AK, 12 JUN 2025 to 07 AUG 2025

BETHEL, ALASKA

AL-5001 (FAA)

25219

LOC/DME I-BET	APP CRS	Rwy Ldg	6400
111.5	192°	TDZE	120
Chan 52		Apt Elev	129

ILS Y or LOC Y RWY 19R

BETHEL (BET)(PABE)

DME required. RNAV 1-GPS required.

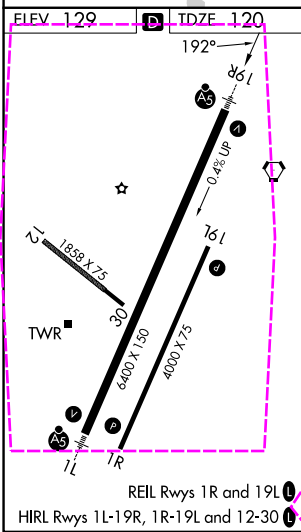
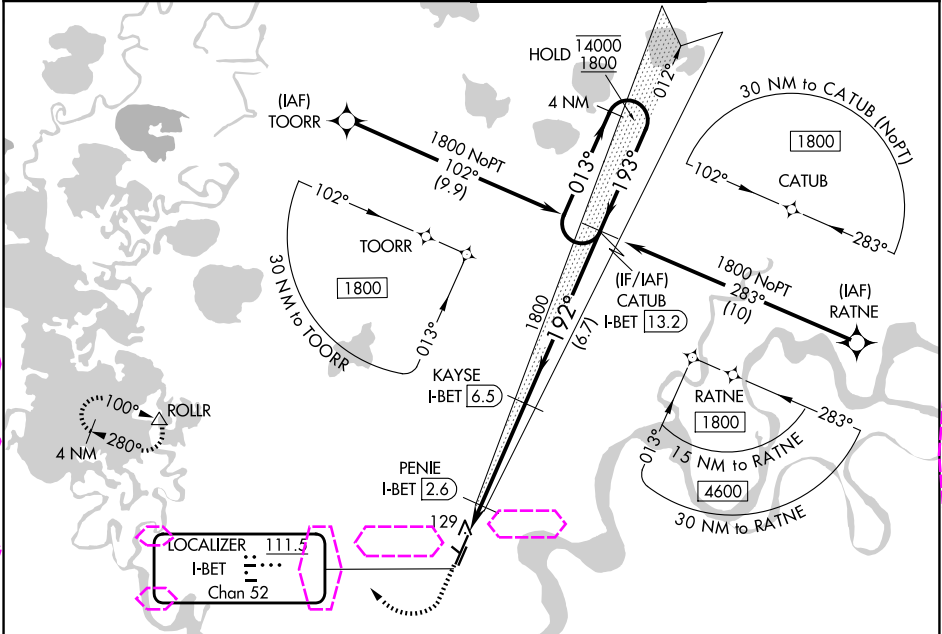
MALSR

MISSED APPROACH: Climb to 1700 then climbing right turn to 2000 direct ROLLR and hold.

NOTES:

- ⚠ Circling NA west of Rwy 1L-19R. For inop ALS, increase S-LOC-19R Cat C/D visibility to RVR 4000.
- # RVR 1800 authorized with use of FD or AP or HUD to DA.

ATIS 119.8	ANCHORAGE CENTER 125.2 372.0	BETHEL TOWER ★ 118.7 (CTAF) 0	GND CON 121.7
---------------	---------------------------------	----------------------------------	------------------



1700	2000	ROLLR	KAYSE I-BET 6.5	CATUB I-BET 13.2	4 NM Holding Pattern
*LOC only	PENIE I-BET 2.6	1800	1800	1800	14000 1800
I-BET 1.3	*I-BET 2	560*	192°	193°	GS 3.00° TCH 52
0.7	0.6	3.9 NM	6.7 NM		
CATEGORY	A	B	C	D	
S-ILS 19R#	320/24	200 (200-½)			
S-LOC 19R	380/24	260 (300-½)			
CIRCLING	500-1 371 (400-1)	600-1 471 (500-1)	600-1½ 471 (500-1½)	680-2 551 (600-2)	

BETHEL, ALASKA
Orig-E 10SEP20

60°47'N-161°50'W

BETHEL (BET)(PABE)
ILS Y or LOC Y RWY 19R