

POINT LAY, ALASKA

AL-2303 (FAA)

24081

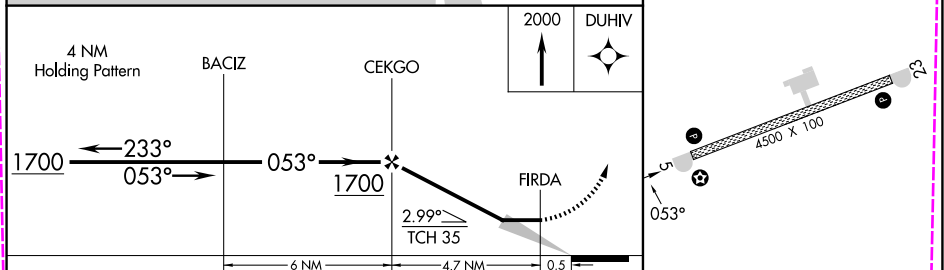
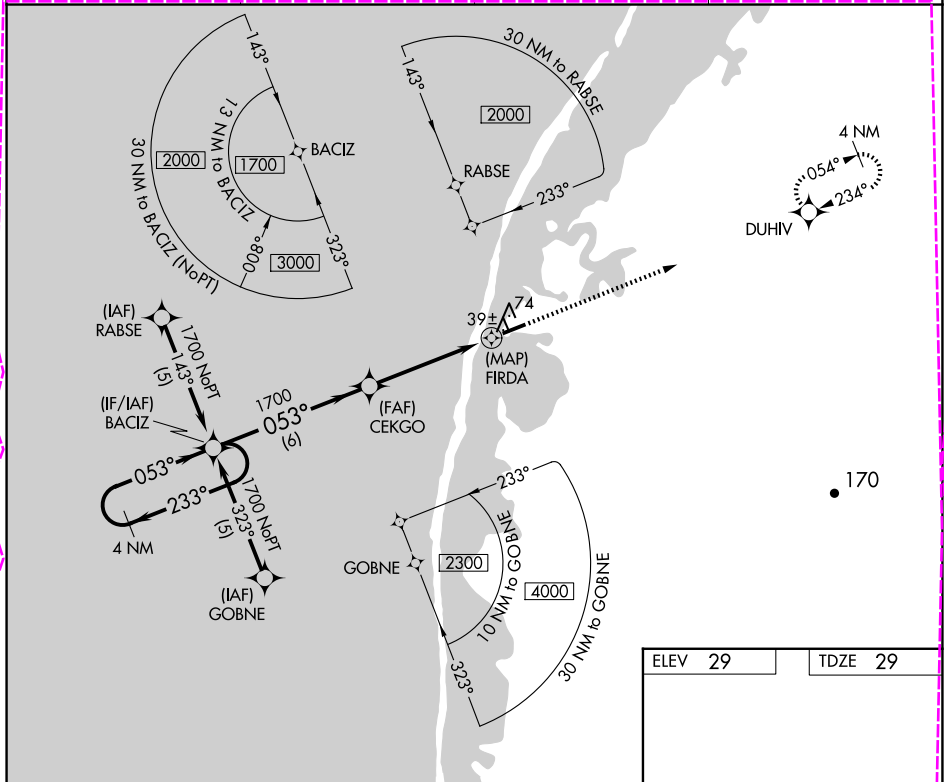
APP CRS	Rwy Idg	4500
053°	TDZE	29
	Apt Elev	29

# RNAV (GPS) RWY 5

POINT LAY LRRS (PIZ) (PPIZ)

33 -33°C	DME/DME RNP- 0.3 NA. When local altimeter setting not received, procedure NA.	MISSED APPROACH: Climb to 2000 direct DUHIV and hold.
----------	---	---

AWOS-3P 135.65	ANCHORAGE CENTER 119.65 363.25	BARROW RADIO 122.4	CTAF 122.8 0
-------------------	-----------------------------------	-----------------------	-----------------



CATEGORY	A	B	C	D
LNVA MDA	380-1 351 (400-1)	380-1 1/4 351 (400-1 1/4)	380-1 1/2 351 (500-1 1/2)	NA
CIRCLING	440-1 411 (500-1)	480-1 451 (500-1)	480-1 1/2 451 (500-1 1/2)	NA

POINT LAY, ALASKA  
Amdt 1A 04FEB16

69°44'N-163°00'W

# POINT LAY LRRS (PIZ) (PPIZ)

## RNAV (GPS) RWY 5

AK, 12 JUN 2025 to 07 AUG 2025

AK, 12 JUN 2025 to 07 AUG 2025

POINT LAY, ALASKA

AL-2303 (FAA)

25219

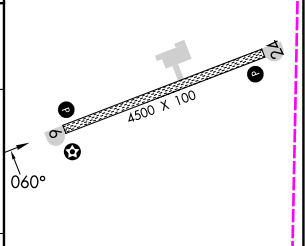
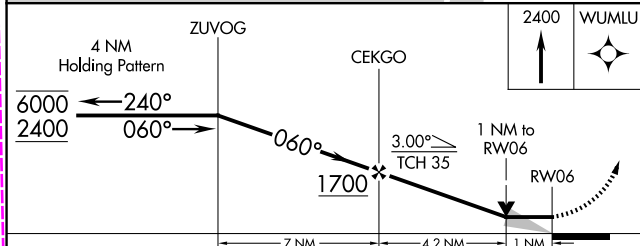
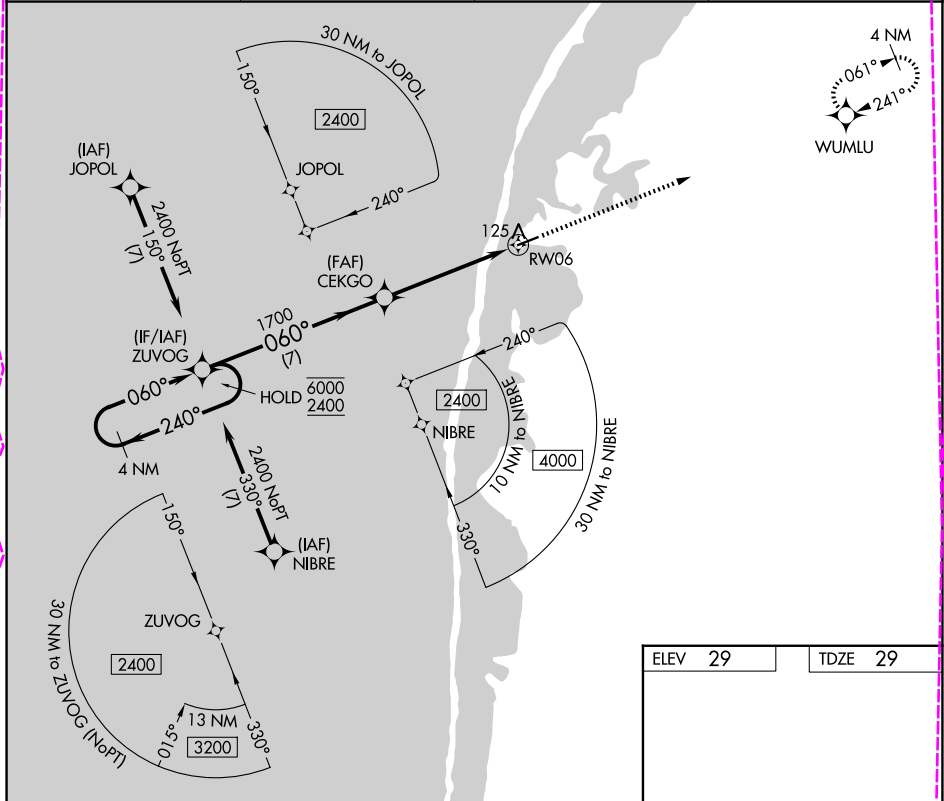
APP CRS	Rwy Ldg	4500
060°	TDZE	29
	Apt Elev	29

# RNAV (GPS) RWY 6

POINT LAY LRRS (PIZ) (PPIZ)

RNP APCH - GPS.	MISSED APPROACH: Climb to 2400 direct WUMLU and hold.
33°C When local altimeter setting not received, procedure NA.	

AWOS-3P 135.65	ANCHORAGE CENTER 119.65 363.25	BARROW RADIO 122.4	CTAF 122.8
-------------------	-----------------------------------	-----------------------	---------------



CATEGORY	A	B	C	D
LNVA MDA	380-1	351 (400-1)	NA	NA
CIRCLING	440-1 411 (500-1)	480-1 451 (500-1)	480-1½ 451 (500-1½)	NA

ELEV 29	TDZE 29
MIRL Rwy 6-24 REIL Rwy 6 and 24	

POINT LAY, ALASKA  
Amdt 2 07AUG25

69°44'N-163°00'W

# POINT LAY LRRS (PIZ) (PPIZ) RNAV (GPS) RWY 6

AK, 07 AUG 2025 to 02 OCT 2025

AK, 07 AUG 2025 to 02 OCT 2025