

POINT LAY, ALASKA

AL-2303 (FAA)

24081

APP CRS	Rwy Idg	4500
234°	TDZE	24
	Apt Elev	29

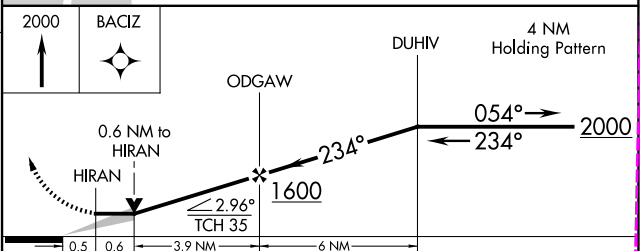
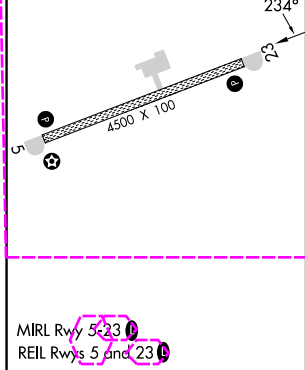
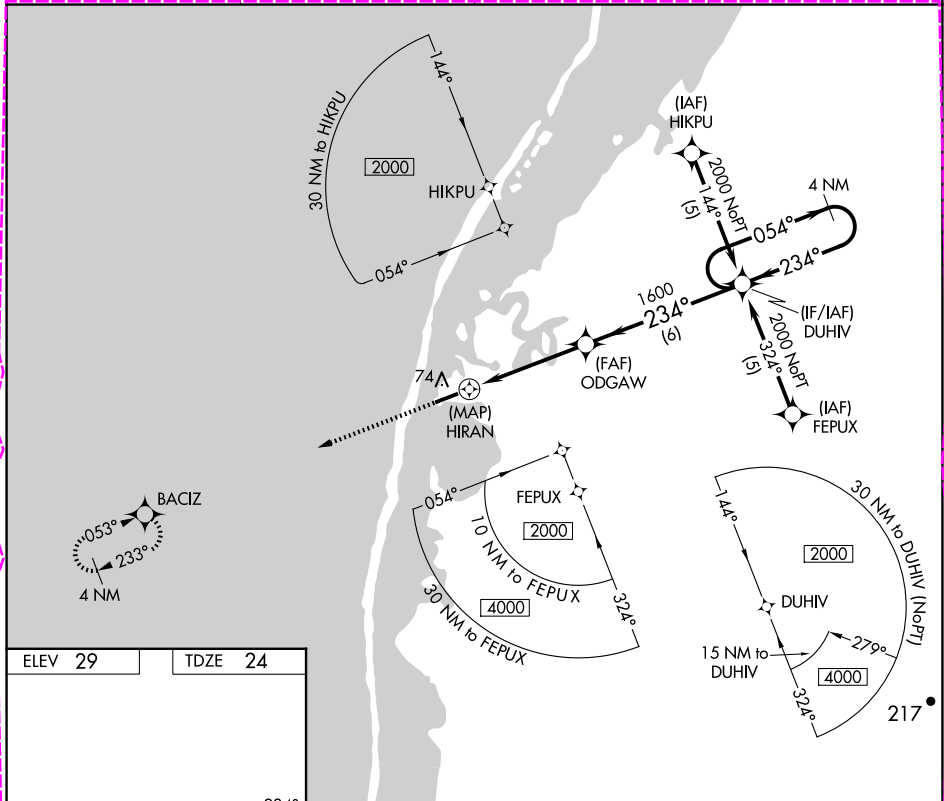
# RNAV (GPS) RWY 23

POINT LAY IRRS (PIZ) (PPIZ)

33 -33°C  
DME/DME RNP- 0.3 NA. When local altimeter setting not received, procedure NA.

MISSED APPROACH: Climb to 2000 direct BACIZ and hold.

AWOS-3P 135.65	ANCHORAGE CENTER 119.65 363.25	BARROW RADIO 122.4	CTAF 122.8
-------------------	-----------------------------------	-----------------------	---------------



CATEGORY	A	B	C	D
LNAV MDA	400-1	376 (400-1)		NA
CIRCLING	440-1 411 (500-1)	480-1 451 (500-1)	480-1½ 451 (500-1½)	NA

POINT LAY, ALASKA  
Amdt 1A 04FEB16

69°44'N-163°00'W

# RNAV (GPS) RWY 23

AK, 12 JUN 2025 to 07 AUG 2025

AK, 12 JUN 2025 to 07 AUG 2025

25219

APP CRS	Rwy Ldg	4500
241°	TDZE	24
	Apt Elev	29

RNAV (GPS) RWY 24

POINT LAY LRRS (PIZ)(PPIZ)

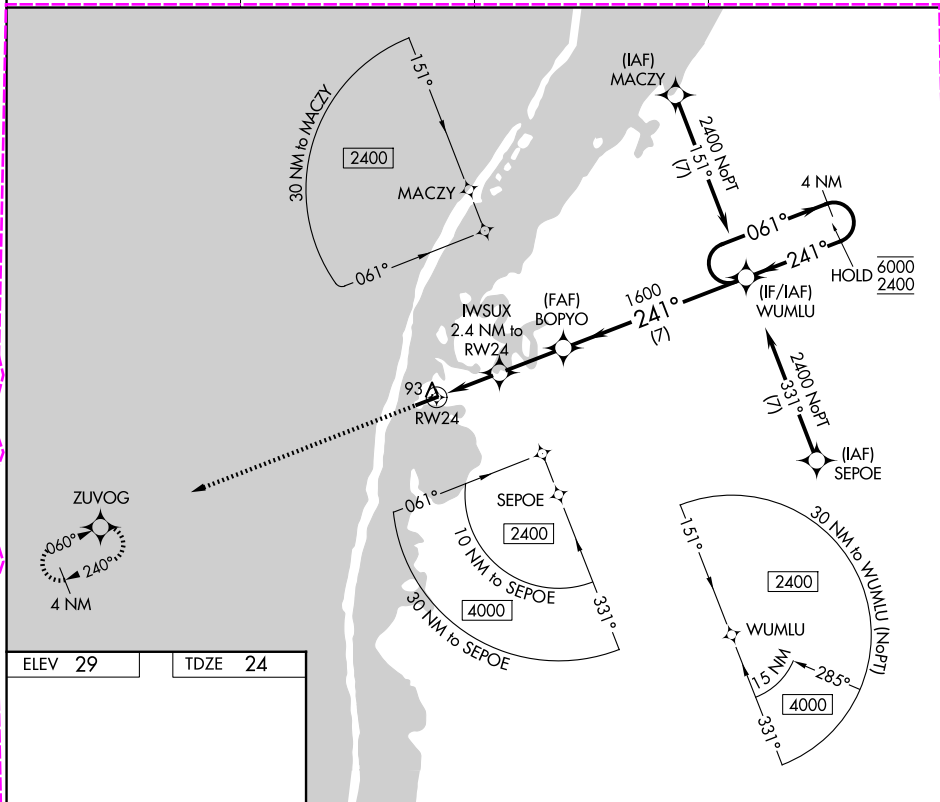
RNP APCH - GPS.

 -33°C

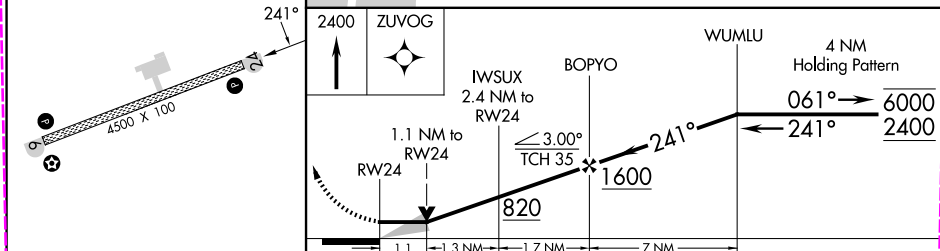
When local altimeter setting not received, procedure NA.

MISSED APPROACH: Climb to 2400 direct ZUVOG and hold.

AWOS-3P <b>135.65</b>	ANCHORAGE CENTER <b>119.65 363.25</b>	BARROW RADIO <b>122.4</b>	CTAF <b>122.80</b>
--------------------------	--	------------------------------	-----------------------



AK, 07 AUG 2025 to 02 OCT 2025



CATEGORY	A	B	C	D
LNAV MDA	400-1 376 (400-1)			NA
CIRCLING	440-1 411 (500-1)	480-1 451 (500-1)	480-1½ 451 (500-1½)	NA

MIRL Rwy 6-24 (L)

REIL Rwy 6 and 24

POINT LAY, ALASKA

Amdt 2 07AUG25

POINT LAY LRRS (PIZ)(PPIZ)

RNAV (GPS) RWY 24

69°44'N-163°00'W