

GUAM, GU

AL-2146 (FAA)

24025

| | | | |
|-----------------|-------------|----------|------------|
| VORTAC UNZ | APP CRS | Rwy Idg | 12014 |
| 115.8 | 242° | TDZE | 305 |
| Chan 105 | | Apt Elev | 305 |

VOR or TACAN RWY 24R

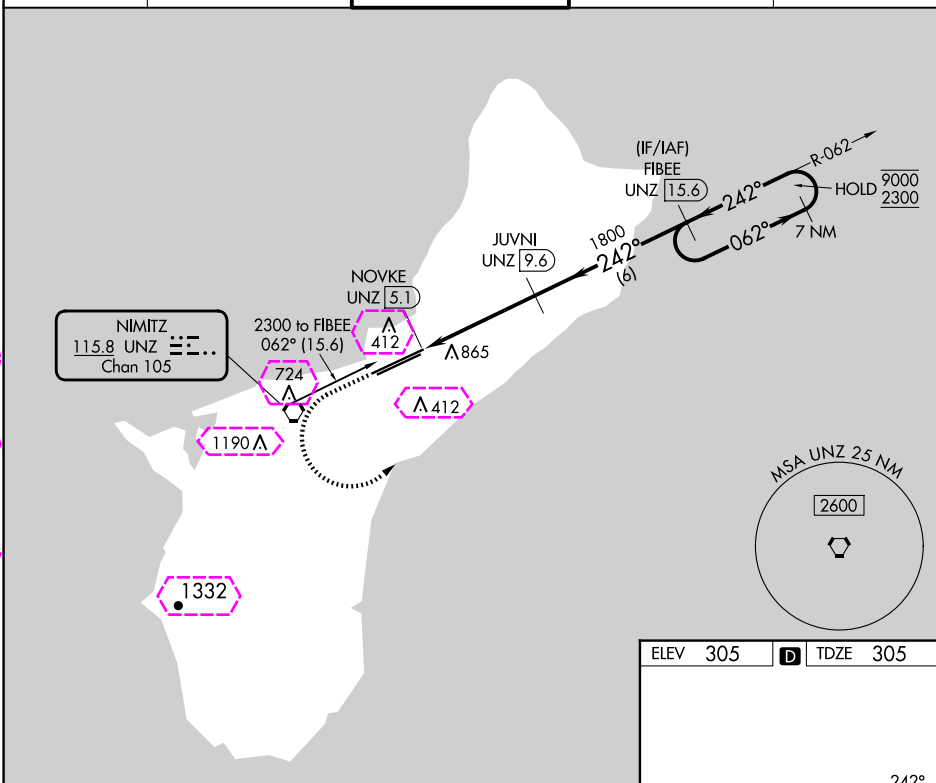
GUAM INTL (GUM)(PGUM)

DME required.

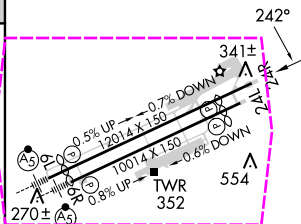
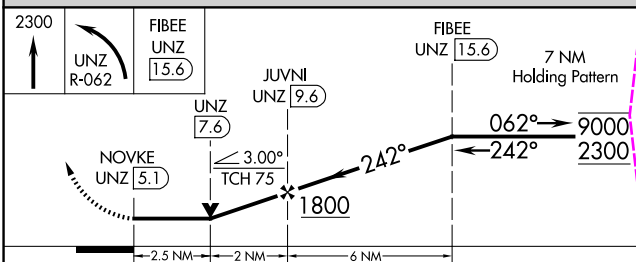
- Circling NA southeast of Rwy 6R-24L.
 Rwy 24R helicopter visibility reduction below $\frac{3}{4}$ SM NA.

MISSED APPROACH: Climb to 2300 then left turn on UNZ VORTAC R-062 to FIBEE/UNZ 15.6 DME and hold.

| | | | | |
|--------------|--------------------|--------------------|--------------------|--------------|
| ATIS | GUAM CERAP | AGANA TOWER | GND CON | CLNC DEL |
| 119.0 | 119.8 269.0 | 118.1 340.2 | 121.9 336.4 | 121.9 |



ELEV 305 TDZE 305



| CATEGORY | A | B | C | D |
|----------|-------------------------|-------------------------|-------------------------|--------------|
| S-24R | 1180-1 875 (900-1) | 1180-1¼ 875 (900-1¼) | 1180-2½ 875 (900-2½) | 875 (900-2½) |
| CIRCLING | 1180-1¼ 875 (900-1¼) | | 1180-2½ 875 (900-2½) | NA |

HIRL all Rwy's

GUAM, GU
Amdt 1B 25JAN24

13°29'N-144°48'E

GUAM INTL (GUM)(PGUM)

VOR or TACAN RWY 24R

GUAM, GU

AL-2146 (FAA)

25219

| | | | |
|------------|---------|----------|-------|
| VORTAC UNZ | APP CRS | Rwy Ldg | 12014 |
| 115.8 | 242° | TDZE | 305 |
| Chan 105 | | Apt Elev | 305 |

VOR or TACAN RWY 24R

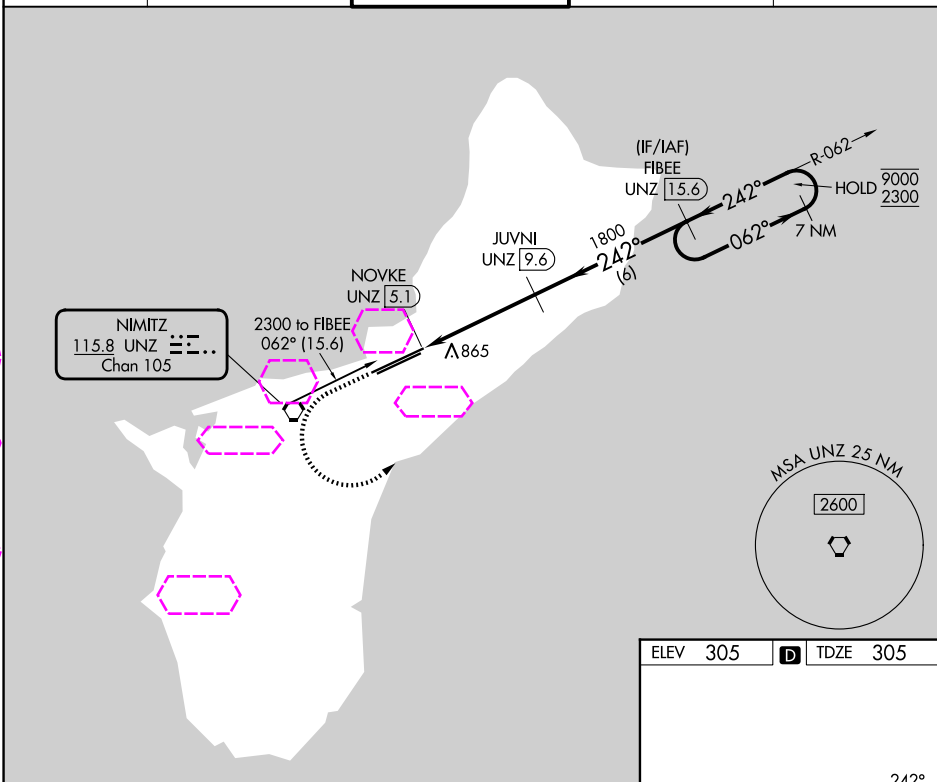
GUAM INTL (GUM)(PGUM)

DME required.

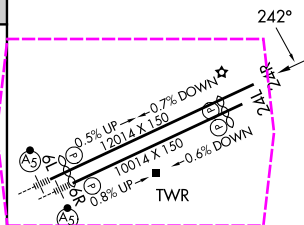
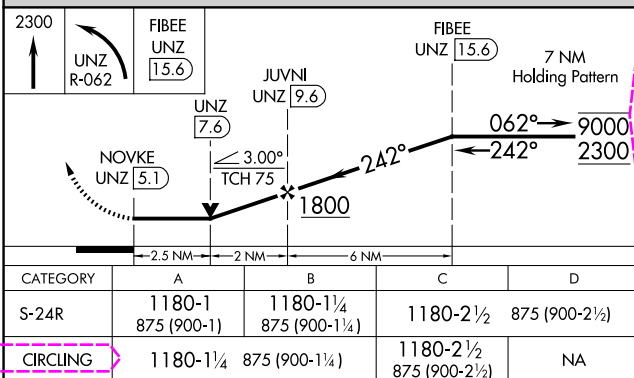
- ▼ Circling NA southeast of Rwy 6R-24L.
 ▲ Rwy 24R helicopter visibility reduction below $\frac{3}{4}$ SM NA.

MISSED APPROACH: Climb to 2300 then left turn on UNZ VORTAC R-062 to FIBEE/UNZ 15.6 DME and hold.

| | | | | |
|-------|-------------|-------------|-------------|----------|
| ATIS | GUAM CERAP | AGANA TOWER | GND CON | CLNC DEL |
| 119.0 | 119.8 269.0 | 118.1 340.2 | 121.9 336.4 | 121.9 |



ELEV 305 **D** TDZE 305



GUAM, GU
 Amdt 1B 25JAN24

13°29'N-144°48'E

GUAM INTL (GUM)(PGUM)

VOR or TACAN RWY 24R

PAC, 07 AUG 2025 to 02 OCT 2025

PAC, 07 AUG 2025 to 02 OCT 2025