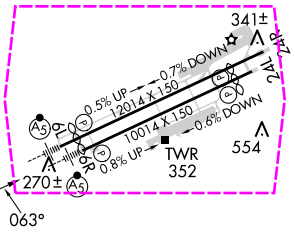
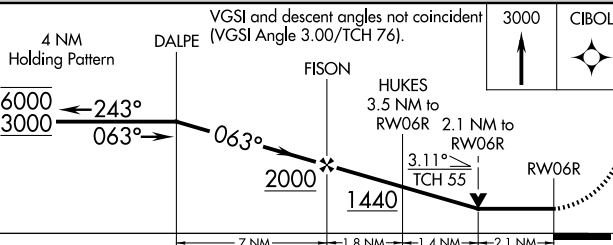
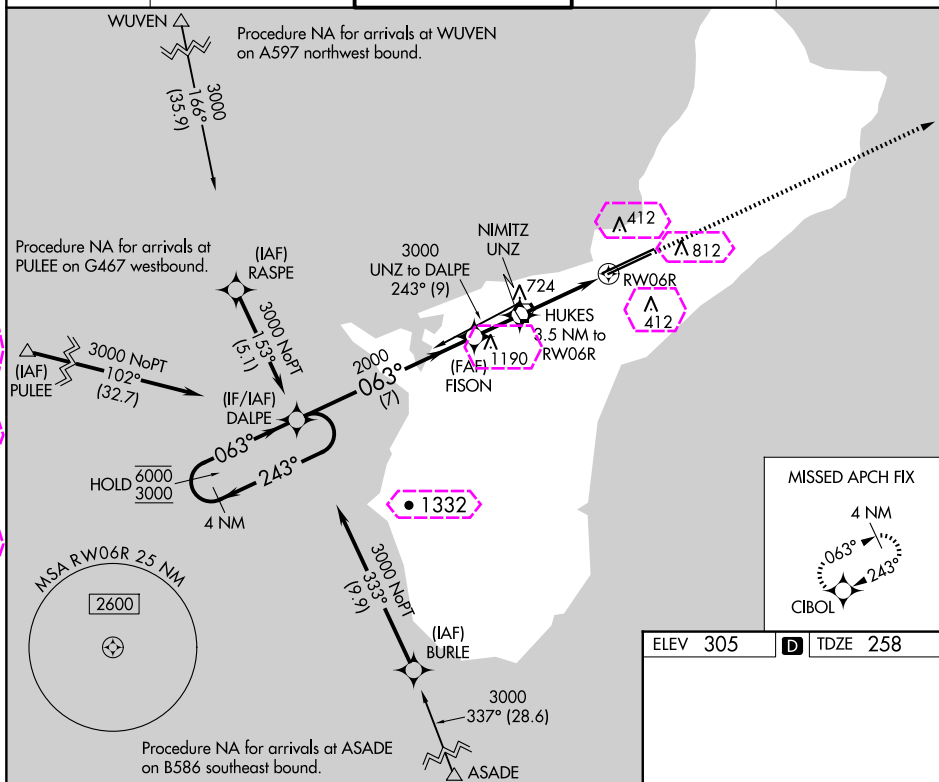


RNAV (GPS) Y RWY 6R
GUAM INTL (GUM)(PGUM)

MISSED APPROACH: Climb to 3000 direct CIBOL and hold.

T Rwy 6R helicopter visibility reduction below $\frac{3}{4}$ SM NA. For inop ALS, increase Cat A and B visibility to 1 SM, and Cat C and D to 2 SM. Circling NA southeast of Rwy 6R-24L.

CLNC DEL
121.9

CATEGORY	A	B	C	D
LNAV MDA	980-3/4	722 (700-3/4)	980-15/8	722 (700-15/8)
C CIRCLING	980-1	675 (700-1)	980-2 675 (700-2)	NA

GUAM INTL (GUM)(PGUM)
RNAV (GPS) Y RWY 6R

12 JUN 2025 to 07 AUG 2025

PAC, 12 JUN 2025 to 07 AUG 2025

GUAM, GU

AL-2146 (FAA)

25219

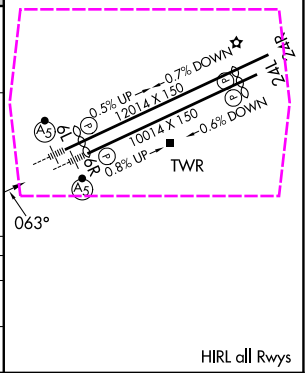
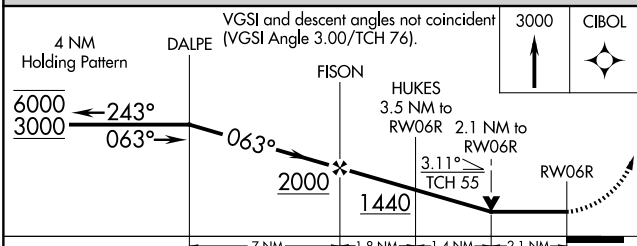
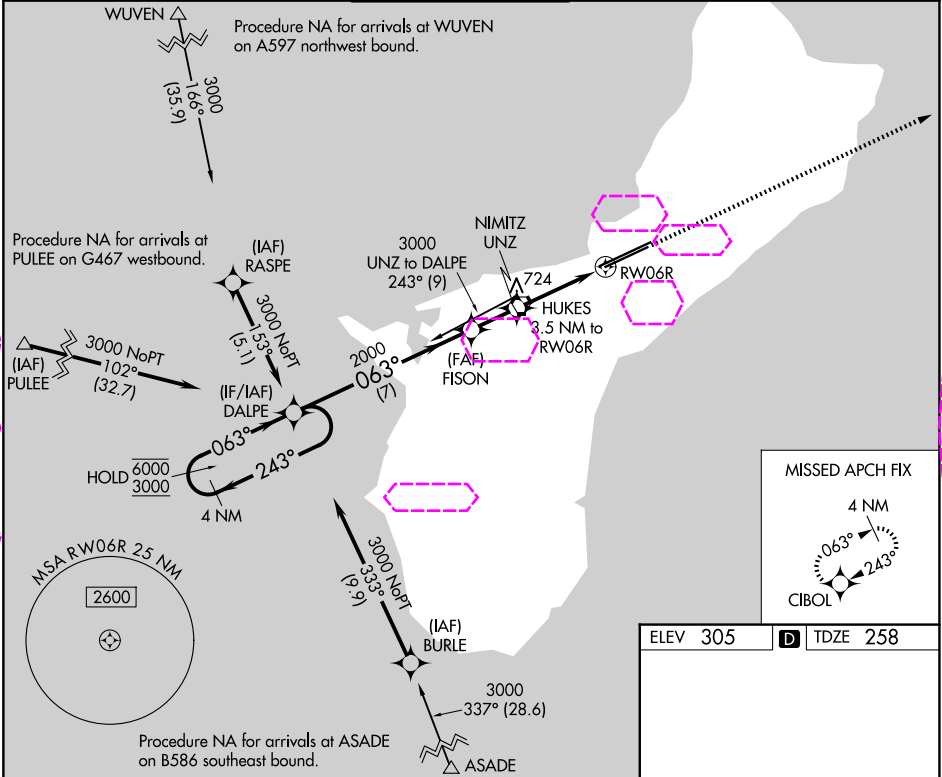
APP CRS	Rwy Ldg	10014
063°	TDZE	258
	Apt Elev	305

RNAV (GPS) Y RWY 6R

GUAM INTL (GUM)(PGUM)

RNP APCH - GPS. ▼ Rwy 6R helicopter visibility reduction below ¾ SM NA. For inop ALS, increase Cat A and B visibility to 1 SM, and Cat C and D to 2 SM. Circling NA southeast of Rwy 6R-24L.	MALSR 	MISSED APPROACH: Climb to 3000 direct CIBOL and hold.
---	-----------	--

ATIS 119.0	GUAM CERAP 119.8 269.0	AGANA TOWER 118.1 340.2	GND CON 121.9 336.4	CLNC DEL 121.9
---------------	---------------------------	----------------------------	------------------------	-------------------



CATEGORY	A	B	C	D
LNAV MDA	980-¾ 722 (700-¾)		980-1⅝ 722 (700-1⅝)	
CIRCLING	980-1 675 (700-1)		980-2 675 (700-2)	NA

GUAM, GU
Amdt 1D 25JAN24

13°29'N-144°48'E

GUAM INTL (GUM)(PGUM)
RNAV (GPS) Y RWY 6R

PAC, 07 AUG 2025 to 02 OCT 2025

PAC, 07 AUG 2025 to 02 OCT 2025

HIRL all Rwys