

GUAM, GU

AL-2146 (FAA)

24025

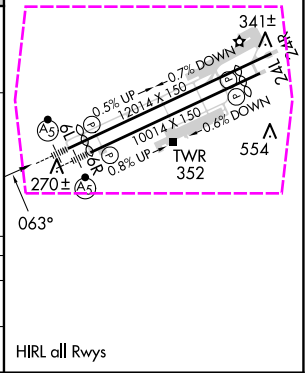
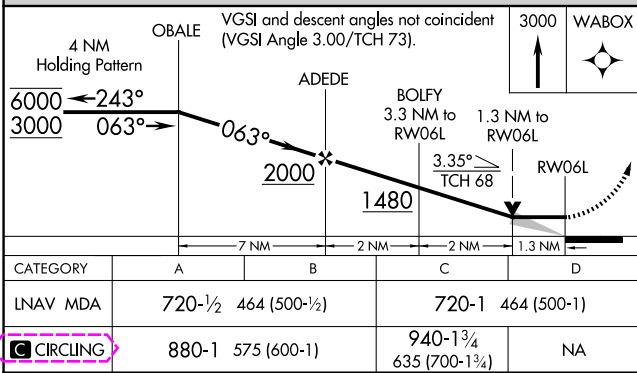
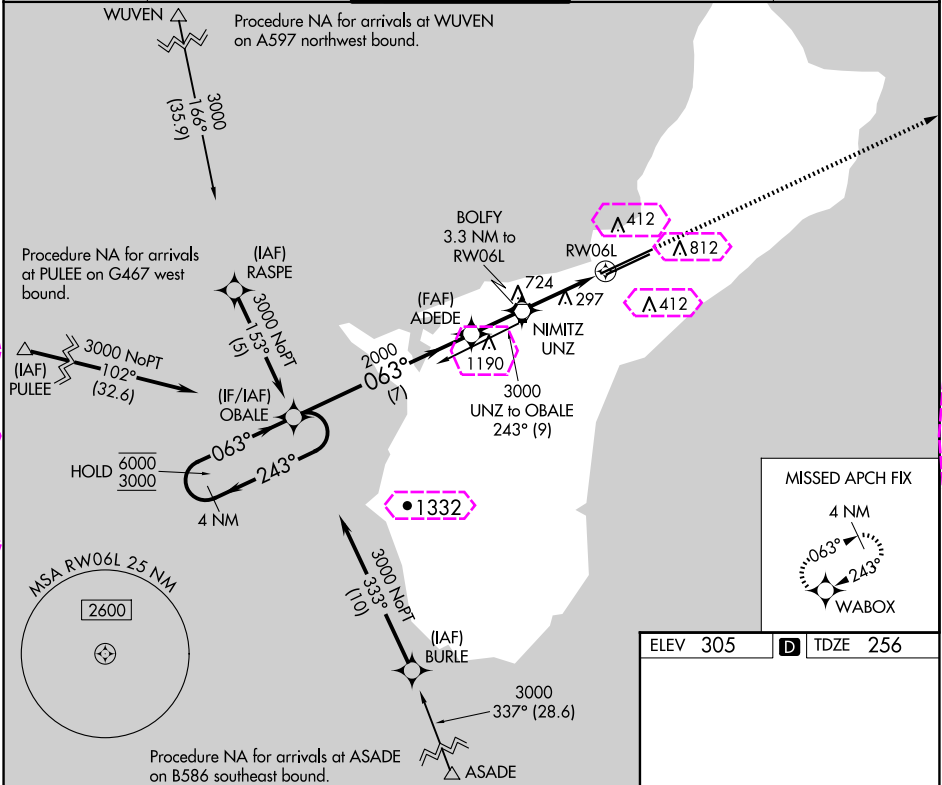
APP CRS	Rwy Idg	11014
063°	TDZE	256
	Apt Elev	305

RNAV (GPS) Y RWY 6L

GUAM INTL (GUM)(PGUM)

RNP APCH - GPS.	MALSR	MISSED APPROACH: Climb to 3000 direct WABOX and hold.
Circling NA southeast of Rwy 6R-24L. For inop ALS, increase Cat C and D visibility to 1 3/4 SM.		

ATIS	GUAM CERAP	AGANA TOWER	GND CON	CLNC DEL
119.0	119.8 269.0	118.1 340.2	121.9 336.4	121.9



GUAM, GU

AL-2146 (FAA)

25219

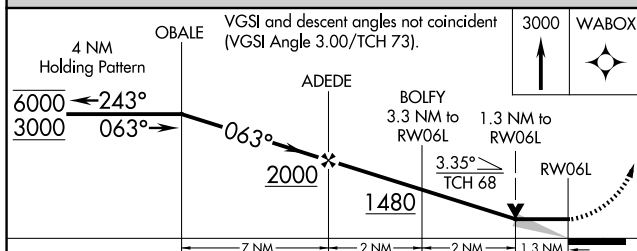
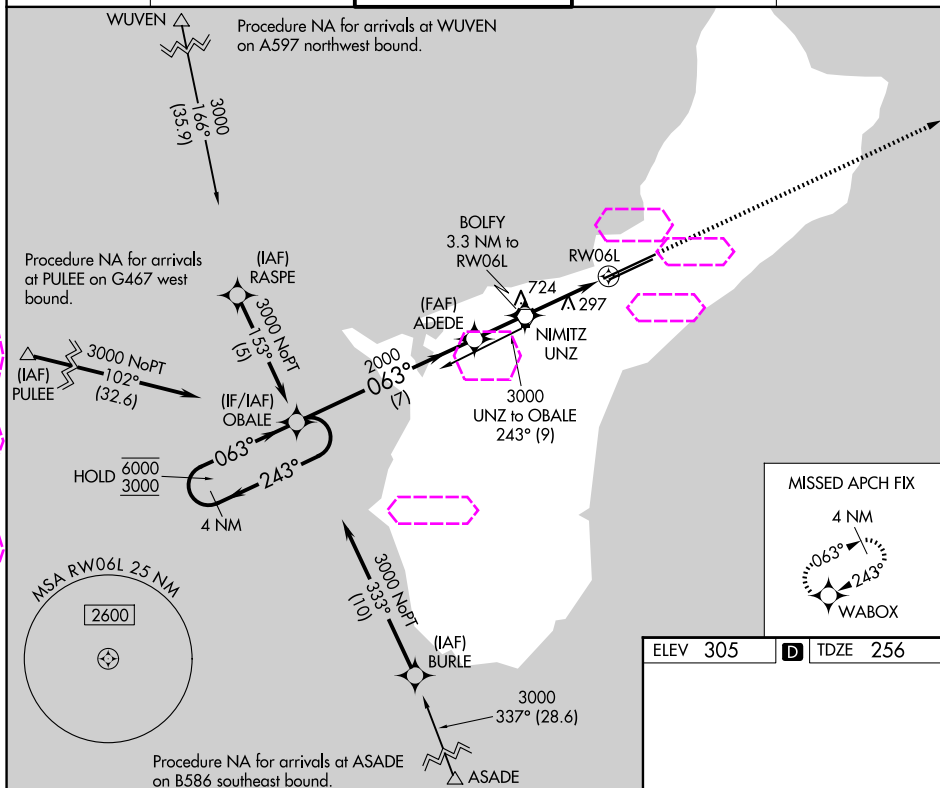
APP CRS	Rwy Ldg	11014
063°	TDZE	256
	Apt Elev	305

RNAV (GPS) Y RWY 6L

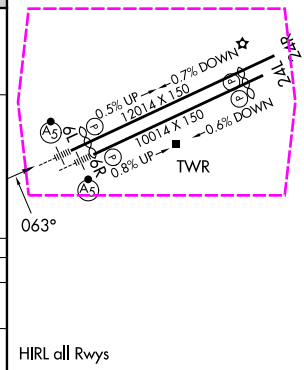
GUAM INTL (GUM)(PGUM)

RNP APCH - GPS.	MALSR	MISSED APPROACH: Climb to 3000 direct WABOX and hold.
▼ Circling NA southeast of Rwy 6R-24L. For inop ALS, increase Cat C and D visibility to 1½ SM.		

ATIS 119.0	GUAM CERAP 119.8 269.0	AGANA TOWER 118.1 340.2	GND CON 121.9 336.4	CLNC DEL 121.9
----------------------	----------------------------------	-----------------------------------	-------------------------------	--------------------------



CATEGORY	A	B	C	D
LNNAV MDA	720-½ 464 (500-½)		720-1 464 (500-1)	
CIRCLING	880-1 575 (600-1)		940-1¾ 635 (700-1¾)	NA



GUAM, GU
Amdt 1C 25JAN24

13°29'N-144°48'E

GUAM INTL (GUM)(PGUM)
RNAV (GPS) Y RWY 6L

PAC, 07 AUG 2025 to 02 OCT 2025

PAC, 07 AUG 2025 to 02 OCT 2025