

GUAM, GU

AL-2146 (FAA)

24025

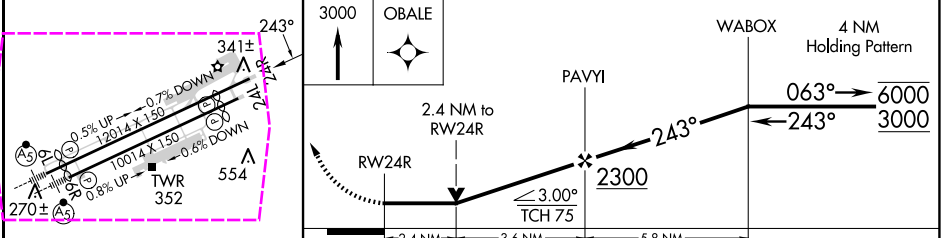
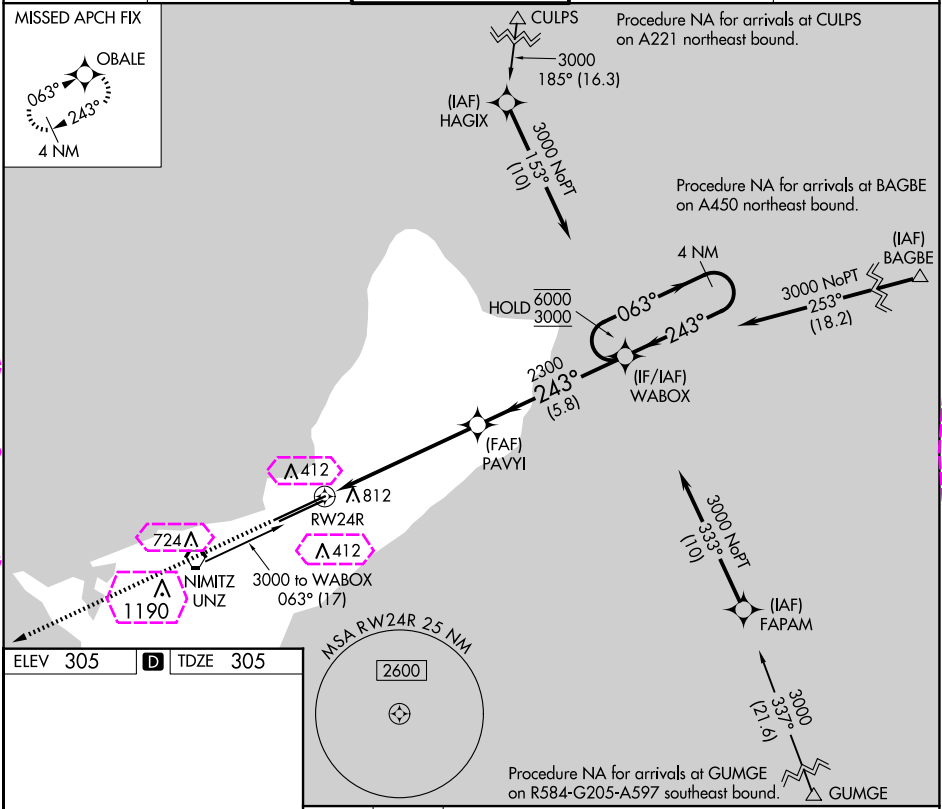
APP CRS	Rwy Idg	12014
243°	TDZE	305
	Apt Elev	305

RNAV (GPS) Y RWY 24R

GUAM INTL (GUM)(PGUM)

RNP APCH - GPS.		MISSED APPROACH: Climb to 3000 direct OBALE and hold.	
Circling NA southeast of Rwy 6R-24L.			
Rwy 24R helicopter visibility reduction below ¾ SM NA.			

ATIS	GUAM CERAP	AGANA TOWER	GND CON	CLNC DEL
119.0	119.8 269.0	118.1 340.2	121.9 336.4	121.9



CATEGORY		A	B	C	D
LNAV MDA		1160-1 855 (900-1)	1160-1¼ 855 (900-1¼)	1160-2½ 855 (900-2½)	
CIRCLING		1160-1¼ 855 (900-1¼)		1160-2½ 855 (900-2½)	NA

GUAM, GU
Amdt 2B 25JAN24

13°29'N-144°48'E

GUAM INTL (GUM)(PGUM)
RNAV (GPS) Y RWY 24R

PAC, 12 JUN 2025 to 07 AUG 2025

PAC, 12 JUN 2025 to 07 AUG 2025

GUAM, GU

AL-2146 (FAA)

25219

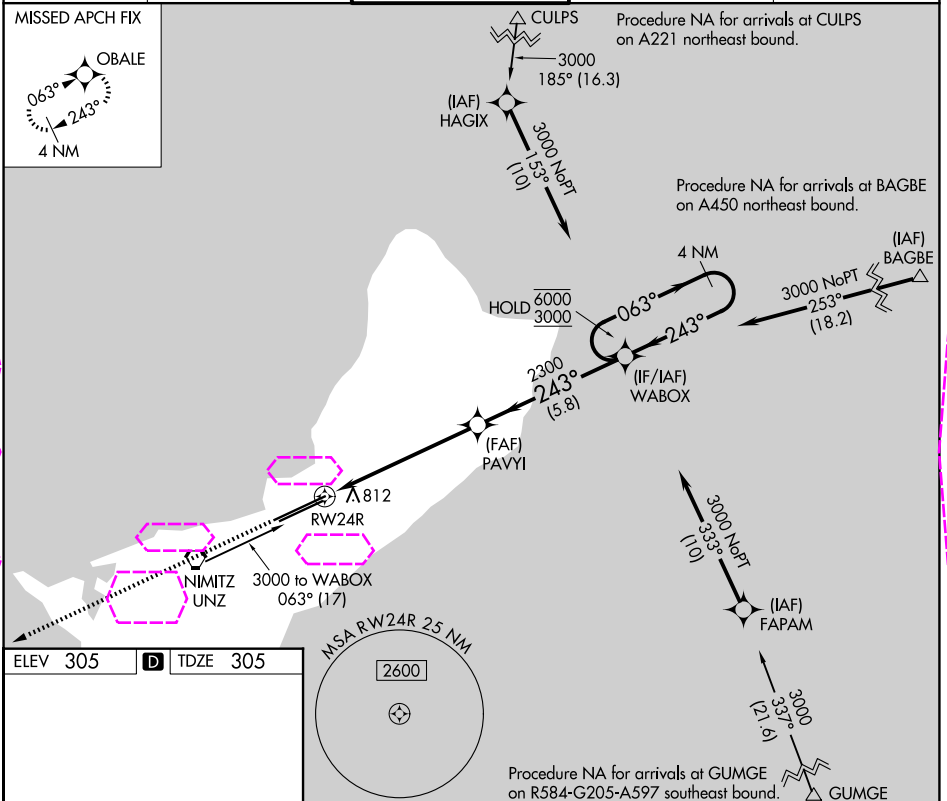
APP CRS	Rwy Ldg	12014
243°	TDZE	305
	Apt Elev	305

RNAV (GPS) Y RWY 24R

GUAM INTL (GUM)(PGUM)

RNP APCH - GPS.		MISSED APPROACH: Climb to 3000 direct OBALE and hold.	
▼ Circling NA southeast of Rwy 6R-24L.			
▲ Rwy 24R helicopter visibility reduction below ¾ SM NA.			

ATIS	GUAM CERAP	AGANA TOWER	GND CON	CLNC DEL
119.0	119.8 269.0	118.1 340.2	121.9 336.4	121.9



3000

OBAL

2.4 NM

3.6 NM

5.8 NM

2.4 NM to RW24R

PAVYI

2300

243°

≤ 3.00°

TCH 75

WABOX

4 NM Holding Pattern

063° → 6000

← 243° 3000

CATEGORY	A	B	C	D
LNAV MDA	1160-1 855 (900-1)	1160-1¼ 855 (900-1¼)	1160-2½ 855 (900-2½)	
CIRCLING	1160-1¼ 855 (900-1¼)		1160-2½ 855 (900-2½)	NA

HIRL all Rwy's

3000

OBAL

2.4 NM

3.6 NM

5.8 NM

2.4 NM to RW24R

PAVYI

2300

243°

≤ 3.00°

TCH 75

WABOX

4 NM Holding Pattern

063° → 6000

← 243° 3000

CATEGORY	A	B	C	D
LNAV MDA	1160-1 855 (900-1)	1160-1¼ 855 (900-1¼)	1160-2½ 855 (900-2½)	
CIRCLING	1160-1¼ 855 (900-1¼)		1160-2½ 855 (900-2½)	NA

GUAM, GU
Amdt 2B 25JAN24

13°29'N-144°48'E

GUAM INTL (GUM)(PGUM)
RNAV (GPS) Y RWY 24R