

GUAM, GU

AL-2146 (FAA)

24025

## RNAV (GPS) Y RWY 24L

GUAM INTL (GUM)(PGUM)

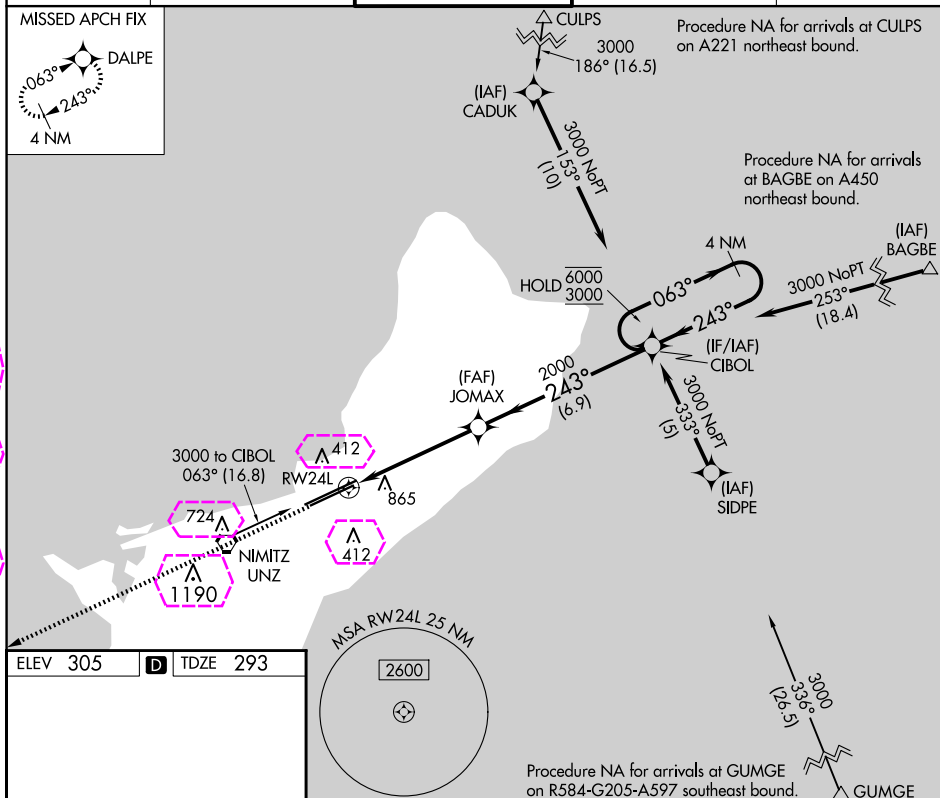
APP CRS	Rwy Idg	8710
243°	TDZE	293
	Apt Elev	305

RNP APCH - GPS.

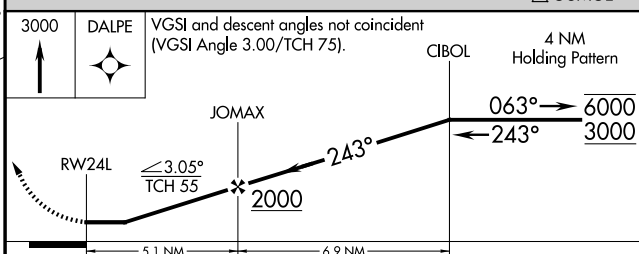
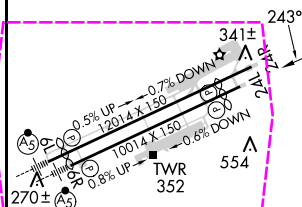
**⚠** Circling NA southeast of Rwy 6R-24L. Rwy 24L helicopter visibility reduction below  $\frac{3}{4}$  SM NA.

MISSED APPROACH: Climb to 3000 direct DALPE and hold.

ATIS	GUAM CERAP	AGANA TOWER	GND CON	CLNC DEL
119.0	119.8 269.0	118.1 340.2	121.9 336.4	121.9



ELEV	305	TDZE	293
------	-----	------	-----



CATEGORY	A	B	C	D
LNAV MDA	1180-1¼ 887 (900-1¼)	1180-2¾ 887 (900-2¾)	1180-3 887 (900-3)	1180-3 887 (900-3)
<b>CIRCLING</b>	1180-1¼ 875 (900-1¼)	1180-2¾ 875 (900-2¾)	1180-3 875 (900-3)	NA

GUAM, GU

Amdt 1D 25JAN24

13°29'N-144°48'E

GUAM INTL (GUM)(PGUM)

## RNAV (GPS) Y RWY 24L

PAC, 12 JUN 2025 to 07 AUG 2025

PAC, 12 JUN 2025 to 07 AUG 2025

GUAM INTL (GUM)(PGUM)

RNP APCH - GPS.	
-----------------	--

**T** Circling NA southeast of Rwy 6R-24L. Rwy 24L helicopter  
**A** visibility reduction below  $\frac{3}{4}$  SM NA.

MISSED APPROACH: Climb to 3000 direct DALPE and hold.

ATIS 119.0	GUAM CERAP 119.8 269.0	AGANA TOWER 118.1 340.2	GND CON 121.9 336.4	CLNC DEL 121.9
---------------	---------------------------	----------------------------	------------------------	-------------------

MISSED APCH FIX




DALPE

063°

243°

4 NM

 CULPS 3000 Procedure NA for arrivals at CULPS on A221 northeast bound.

Procedure NA for arrivals  
at BAGBE on A450  
northeast bound.

Procedure NA for arrivals at GUMGE  
on R584-G205-A597 southeast bound.

ELEV 305	<b>D</b>	TDZE 293
----------	----------	----------

MSA RW24L 25 NM

3600

VGSI and descent angles not coincident  
(VGSI Angle 3.00/TCH 75).

CIBOL 4 NM  
Holding Pattern

CATEGORY	A	B	C	D
LNAV MDA	1180-1¼	887 (900-1¼)	1180-2¾ 887 (900-2¾)	1180-3 887 (900-3)
CIRCLING	1180-1¼	875 (900-1¼)	1180-2¾ 875 (900-2¾)	NA

HIRL all Rwys

GUAM, GU  
Amdt 1D 25JAN24

13°29'N-144°48'E

GUAM INTL (GUM)(PGUM)

RNAV (GPS) Y RWY 24L

PAC, 07 AUG 2025 to 02 OCT 2025

PAC, 07 AUG 2025 to 02 OCT 2025