

GUAM, GU

AL-2146 (FAA)

25219

APP CRS	Rwy Ldg	10014
063°	TDZE	258
	Apt Elev	305

RNAV (RNP) Z RWY 6R


GUAM INTL (GUM)(PGUM)

RNP AR APCH - GPS.

▼ For uncompensated Baro-VNAV systems, procedure NA below 19°C or above 48°C. For inop ALS, increase RNP 0.30 all Cats visibility to 1½ SM. Inop table does not apply to RNP 0.30.*

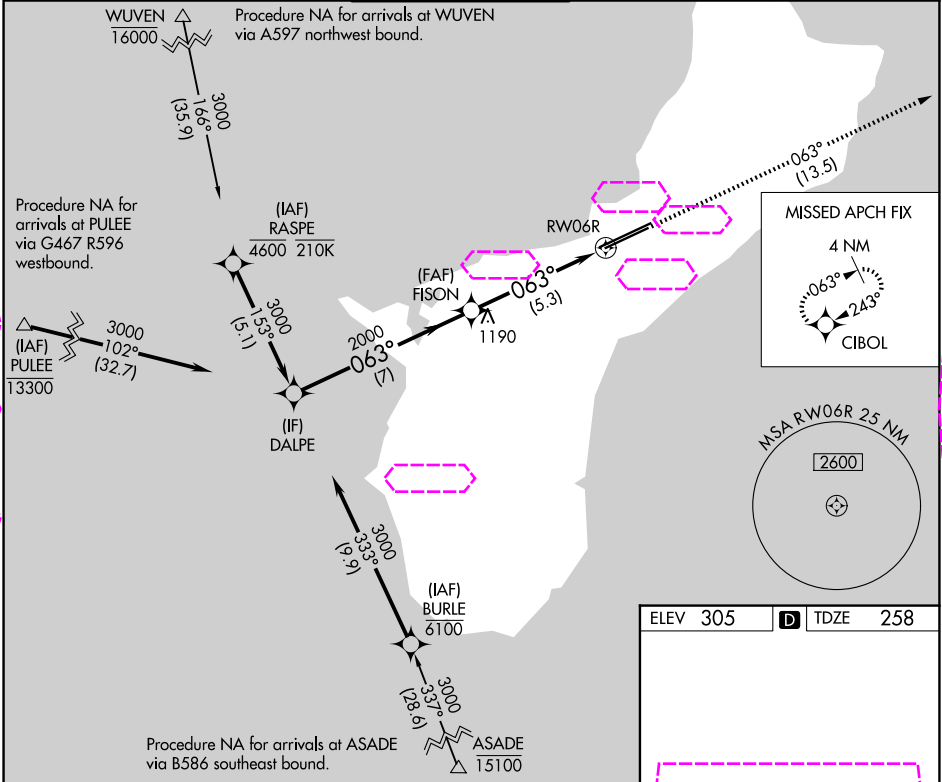
*Missed approach requires a minimum climb of 285 feet per NM to 1400.



MALSR

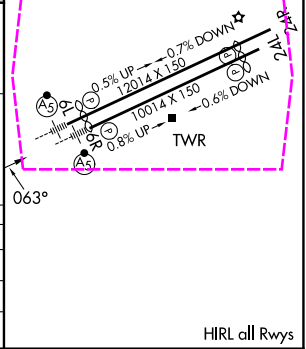


MISSED APPROACH: Climb to 3000 via track 063° to CIBOL and hold.

ATIS	GUAM CERAP	AGANA TOWER	GND CON	CLNC DEL
119.0	119.8 269.0	118.1 340.2	121.9 336.4	121.9



Procedure Turn NA	DALPE	VGS1 and RNAV glidepath not coincident (VGS1 Angle 3.00/TCH 76).		3000	CIBOL
		FISON			
	<u>3000</u>		2000		
		063°			
			<u>2000</u>		
GP 3.00° TCH 55		7 NM	5.3 NM		
CATEGORY	A	B	C	D	
RNP 0.30* DA		511-¾	253 (300-¾)		
RNP 0.30 DA		656-¾	398 (400-¾)		
AUTHORIZATION REQUIRED					



AUTHORIZATION REQUIRED