

GUAM INTL (GUM)(PGUM)
RNAV (RNP) Z RWY 6L

GUAM, GU

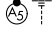
AL-2146 (FAA)

25219

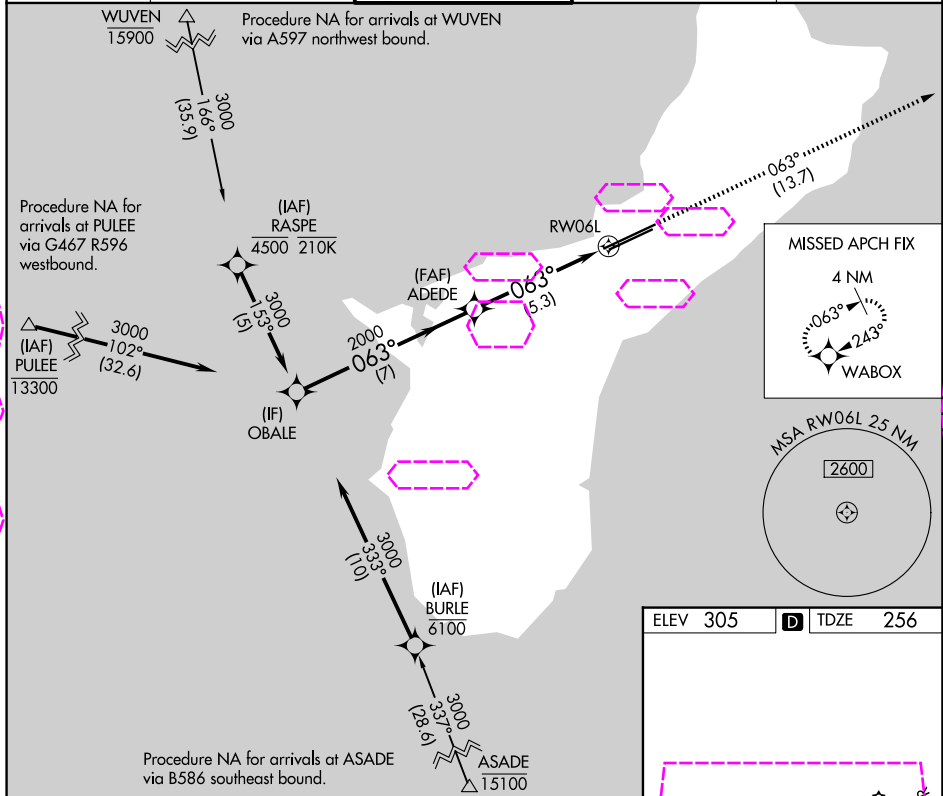
APP CRS	Rwy Ldg	11014
063°	TDZE	256
	Apt Elev	305

RNAV (RNP) Z RWY 6L

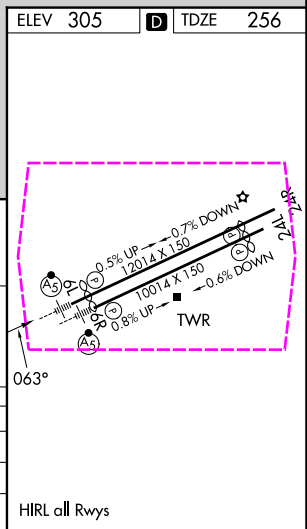
GUAM INTL (GUM)(PGUM)

RNP AR APCH - GPS.	MALSR 	MISSED APPROACH: Climb to 3000 via track 063° to WABOX and hold.
▼ For uncompensated Baro-VNAV systems, procedure NA below 19°C or above 48°C. For inop ALS, increase RNP *0.30 all Cats visibility to ¾ SM and RNP 0.30 all Cats visibility to 1½ SM. *Missed approach requires a minimum climb of 276 feet per NM to 1400.		

ATIS 119.0	GUAM CERAP 119.8 269.0	AGANA TOWER 118.1 340.2	GND CON 121.9 336.4	CLNC DEL 121.9
---------------	---------------------------	----------------------------	------------------------	-------------------



Procedure Turn NA	OBALE	VGSI and RNAV glidepath not coincident (VGSI Angle 3.00/TCH 73)	3000	WABOX
GP 3.00° TCH 50	3000	063°	2000	tr 063°
		7 NM	5.3 NM	
CATEGORY	A	B	C	D
RNP 0.30* DA		514-½	258 (300-½)	
RNP 0.30 DA		656-⅝	400 (400-⅝)	
AUTHORIZATION REQUIRED				



GUAM, GU
Orig-E 25JAN24

13°29'N-144°48'E

GUAM INTL (GUM)(PGUM)
RNAV (RNP) Z RWY 6L