

GUAM, GU

AL-2146 (FAA)

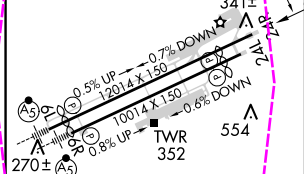
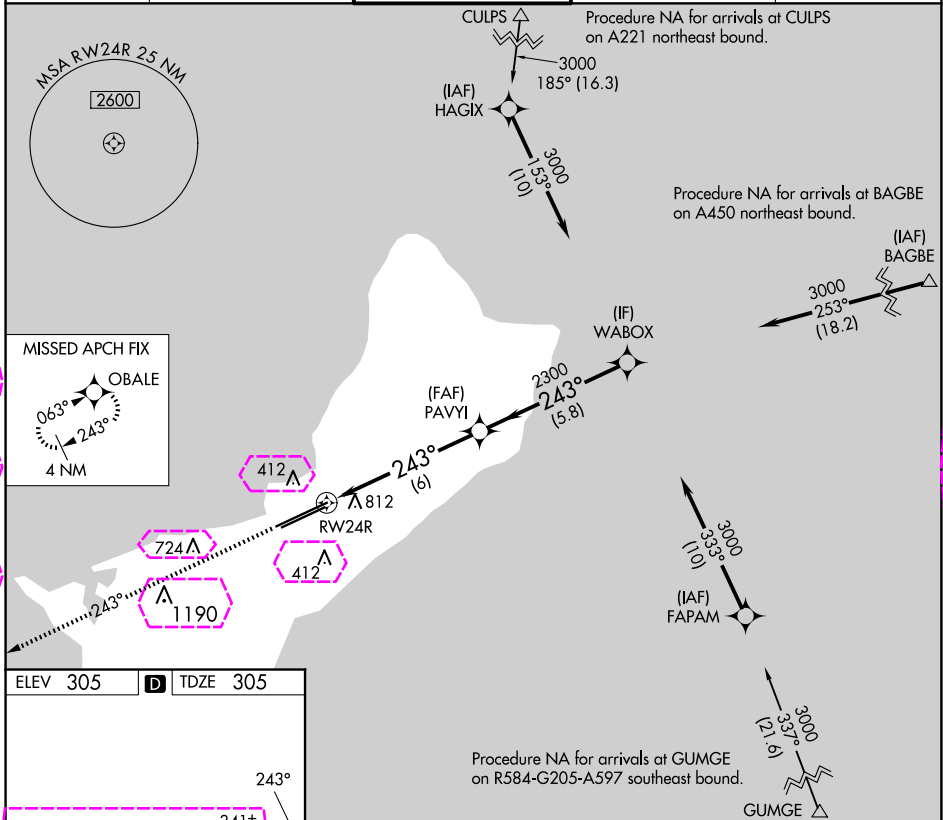
23334


APP CRS	Rwy Idg	12014
243°	TDZE	305
	Apt Elev	305

RNAV (RNP) Z RWY 24R

GUAM INTL (GUM)(PGUM)

RNP AR APCH - GPS.		MISSED APPROACH: Climb to 3000 on track 243° to OBALE and hold.		
Procedure NA at night. For uncompensated Baro-VNAV systems, procedure NA below 22°C or above 52°C.				
ATIS	GUAM CERAP	AGANA TOWER	GND CON	CLNC DEL
119.0	119.8 269.0	118.1 340.2	121.9 336.4	121.9



HIRL all Rwys			2300		GP 3.00° TCH 75
	6 NM		5.8 NM		
	CATEGORY	A	B	C	D
	RNP 0.24 DA	1014-2½		709 (800-2½)	
	RNP 0.30 DA	1072-2½		767 (800-2½)	
	AUTHORIZATION REQUIRED				

AUTHORIZATION REQUIRED

GUAM, GU
Amdt 1B 30NOV23

13°29'N-144°48'E

GUAM INTL (GUM)(PGUM)
RNAV (RNP) Z RWY 24R

PAC, 12 JUN 2025 to 07 AUG 2025

PAC, 12 JUN 2025 to 07 AUG 2025

GUAM, GU

AL-2146 (FAA)

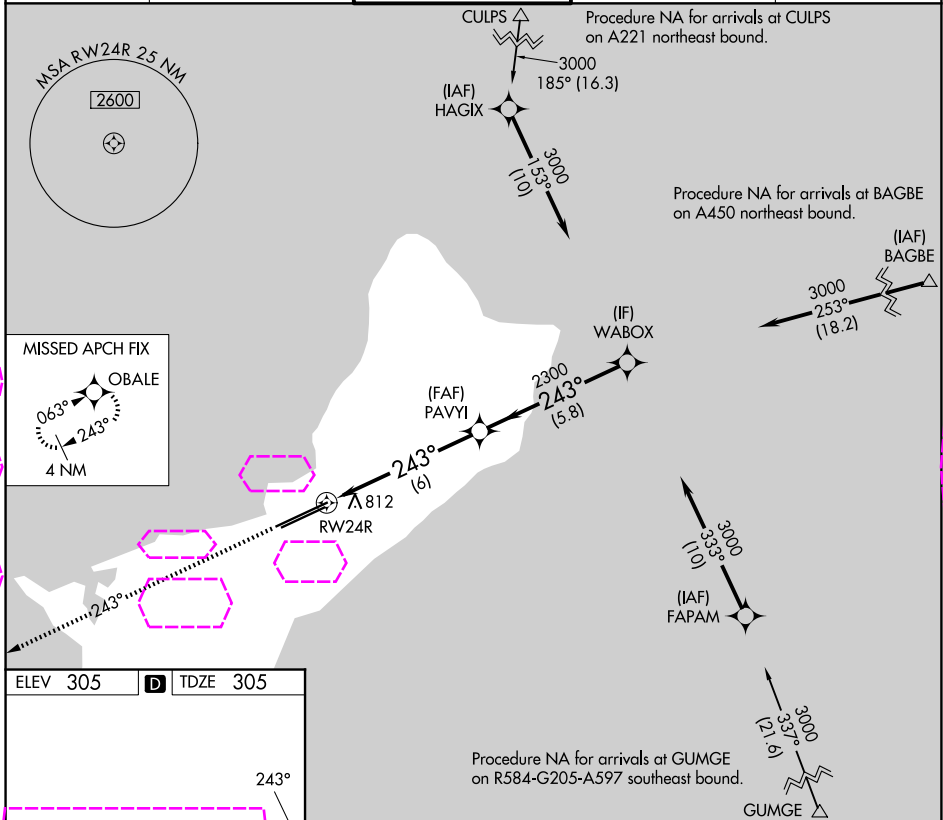
25219

APP CRS	Rwy Ldg	12014
243°	TDZE	305
	Apt Elev	305

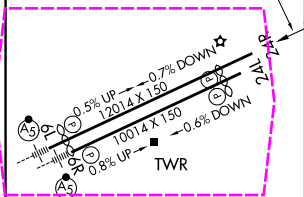
RNAV (RNP) Z RWY 24R

GUAM INTL (GUM)(PGUM)

RNP AR APCH - GPS.		MISSED APPROACH: Climb to 3000 on track 243° to OBALE and hold.		
<div><div></div><div></div></div>	Procedure NA at night. For uncompensated Baro-VNAV systems, procedure NA below 22°C or above 52°C.			
ATIS 119.0	GUAM CERAP 119.8 269.0	AGANA TOWER 118.1 340.2	GND CON 121.9 336.4	CLNC DEL 121.9



ELEV 305	D	TDZE 305
----------	---	----------



CATEGORY				A	B	C	D
RNP 0.24 DA				1014-2½	709 (800-2½)		
RNP 0.30 DA				1072-2½	767 (800-2½)		

AUTHORIZATION REQUIRED

GUAM, GU
Amdt 1B 30NOV23

13°29'N-144°48'E

GUAM INTL (GUM)(PGUM)
RNAV (RNP) Z RWY 24R

PAC, 07 AUG 2025 to 02 OCT 2025

PAC, 07 AUG 2025 to 02 OCT 2025