

24025

NDB AJA
385

APP CR5
241°

Rwy Idg	12014
TDZE	305
Apt Elev	305

NDB RWY 24R
GUAM INTL (GUM)(PGUM)

DME required.

NA Circling NA southeast of Rwy 6R-24L. Rwy 24R helicopter visibility reduction below $\frac{3}{4}$ SM NA. Simultaneous reception of AJA NDB and UNZ DME required.

MISSED APPROACH: Climb to 2300 direct AJA NDB and left turn on AJA NDB bearing 061° to ADAYI/UNZ 15.6 DME and hold.

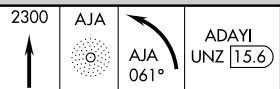
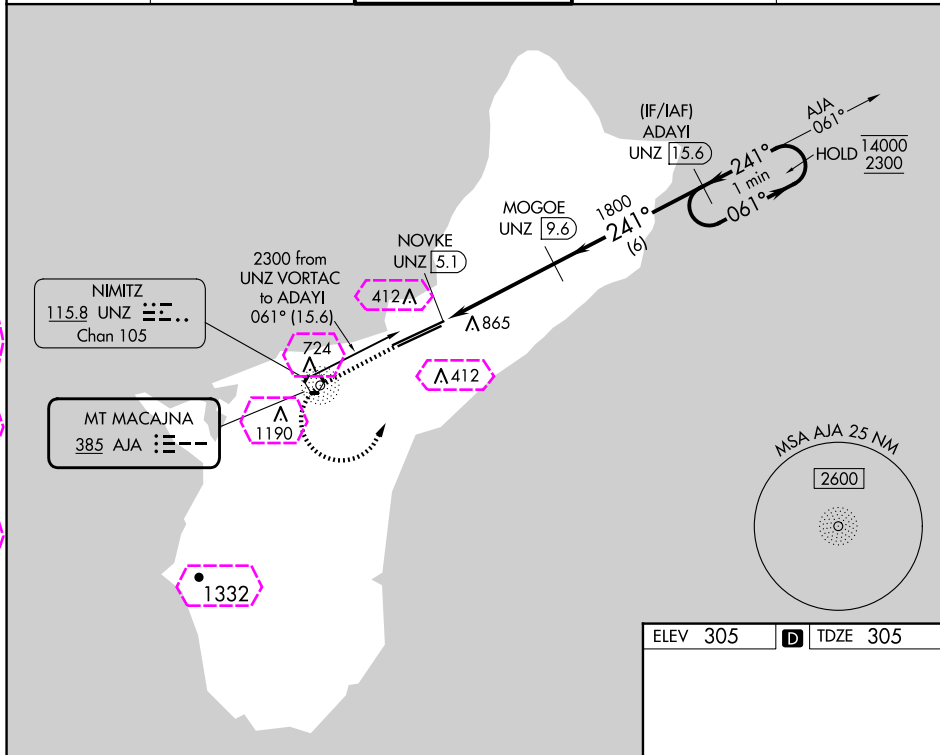
ATIS
119.0

GUAM CERAP
119.8 269.0

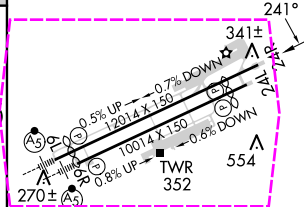
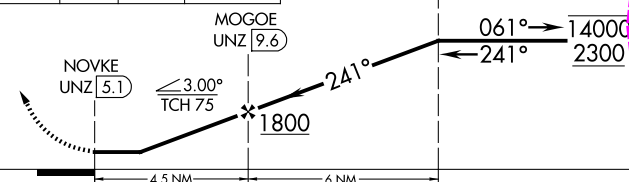
AGANA TOWER
118.1 340.2

GND CON
121.9 336.4

CLNC DEL
121.9



ADAYI
UNZ 15.6 One Minute
Holding Pattern



CATEGORY	A	B	C	D
S-24R	1220-1¼ 915 (1000-1¼)		1220-2½ 915 (1000-2½)	
C CIRCULING	1220-1¼ 915 (1000-1¼)		1220-2¾ 915 (1000-2¾)	NA

HIRL all Rwys

GUAM, GU
Amdt 1B 25JAN24

13°29'N-144°48'E

GUAM INTL (GUM)(PGUM)
NDB RWY 24R

GUAM, GU

AL-2146 (FAA)

25219

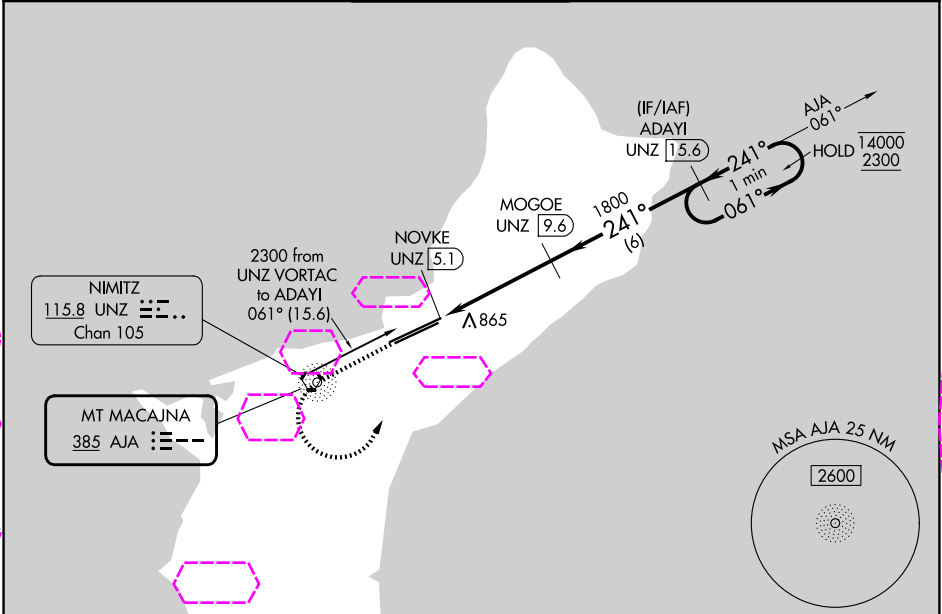
NDB AJA	APP CRS	Rwy Ldg	12014
385	241°	TDZE	305
		Apt Elev	305

NDB RWY 24R

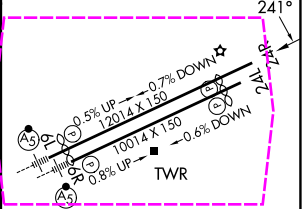
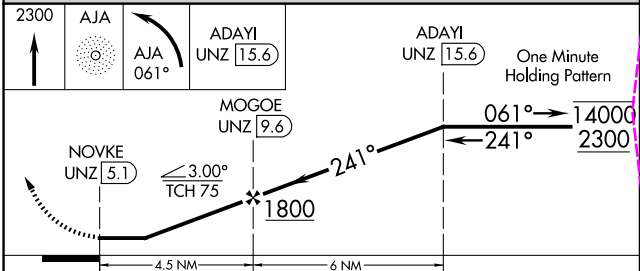
GUAM INTL (GUM)(PGUM)

DME required.	MISSED APPROACH: Climb to 2300 direct AJA NDB and left turn on AJA NDB bearing 061° to ADAYI/UNZ 15.6 DME and hold.
NA Circling NA southeast of Rwy 6R-24L. Rwy 24R helicopter visibility reduction below ¾ SM NA. Simultaneous reception of AJA NDB and UNZ DME required.	

ATIS	GUAM CERAP	AGANA TOWER	GND CON	CLNC DEL
119.0	119.8 269.0	118.1 340.2	121.9 336.4	121.9



ELEV 305	TDZE 305
----------	----------



CATEGORY	A	B	C	D
S-24R	1220-1¼ 915 (1000-1¼)		1220-2½ 915 (1000-2½)	
CIRCLING	1220-1¼ 915 (1000-1¼)		1220-2¾ 915 (1000-2¾)	NA

HIRL all Rwys

GUAM, GU
Amdt 1B 25JAN24

13°29'N-144°48'E

GUAM INTL (GUM)(PGUM)
NDB RWY 24R

PAC, 07 AUG 2025 to 02 OCT 2025

PAC, 07 AUG 2025 to 02 OCT 2025