

ILS or LOC RWY 6L
GUAM INTL (GUM)(PGUM)

MISSED APPROACH: Climb to 2100 then climbing right turn to 3000 direct UNZ VORTAC then on I-GUM localizer SW course to OBALE/I-GUM 14.3 DME/RADAR and hold.



The diagram illustrates a complex radar network and ship movements. Key elements include:

- Radar Coverage:** Multiple radar arcs are shown, each associated with a specific radar system and range. Examples include "CETAS UNZ 9 RADAR", "HARLO I-GUM 7.3 RADAR", "NIMITZ 115.8 UNZ Chan 105", and "MSA UNZ 25 NM".
- Ship Positions:** Several ships are identified with their names and coordinates or ranges. These include "MT MACAJNA 385 AJA", "MOBKE I-GUM 5.8", "HARLO I-GUM 7.3", and "NIMITZ 115.8 UNZ Chan 105".
- Navigation and Timing:** The diagram includes time-based annotations such as "3000 NoPT", "063°", "243°", and "1 min.", which likely represent specific times or angles.
- Geographical Features:** A large circular area at the bottom right is labeled "MSA UNZ 25 NM", indicating a Maritime Safety Area.

D	TDZE 256
----------	----------

HIRL all Rwys

FAF to MAP 5.4 NM					
Knots	60	90	120	150	180
Min:Sec	5:24	3:36	2:42	2:10	1:48

GUAM, GU

AL-2146 (FAA)

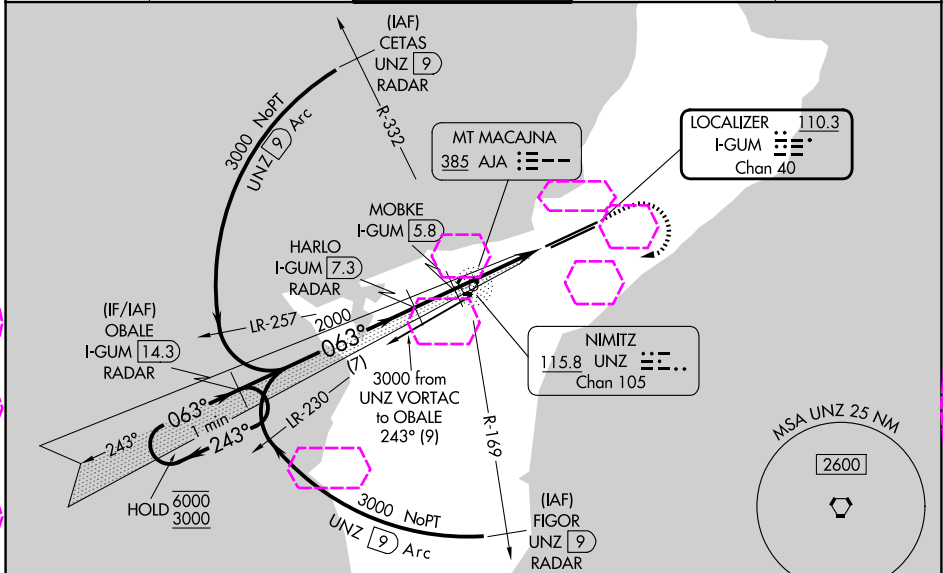
25219

LOC/DME I-GUM 110.3 Chan 40	APP CRS 063°	Rwy Ldg 11014 TDZE 256 Apt Elev 305
---	------------------------	--

ILS or LOC RWY 6L
GUAM INTL (GUM)(PGUM)

DME or RADAR required.	MALSR 	MISSED APPROACH: Climb to 2100 then climbing right turn to 3000 direct UNZ VORTAC then on I-GUM localizer SW course to OBALE/I-GUM 14.3 DME/RADAR and hold.
<p>⚠ Circling NA southeast of Rwy 6R-24L. For inop ALS, increase S-ILS 6L all Cats visibility to 1 SM; MOBKE fix minimums (DME required): For inop ALS, increase S-LOC 6L Cats C and D visibility to 2 1/2 SM. Inop table does not apply to S-LOC 6L Cats C and D.</p>		

ATIS 119.0	GUAM CERAP 119.8 269.0	AGANA TOWER 118.1 340.2	GND CON 121.9 336.4	CLNC DEL 121.9
----------------------	----------------------------------	-----------------------------------	-------------------------------	--------------------------



VGSI and ILS glidepath not coincident (VGSI Angle 3.00/TCH 73).				
CATEGORY	A	B	C	D
S-ILS 6L	590-1/2 334 (300-1/2)			
S-LOC 6L	1500-3/4 1244 (1200-3/4)	1500-1 1244 (1200-1)	1500-3 1244 (1200-3)	
CIRCLING	1500-1 1/4 1195 (1200-1 1/4)	1500-1 1/2 1195 (1200-1 1/2)	1500-3 1195 (1200-3)	NA
MOBKE FIX MINIMUMS (DME REQUIRED)				
S-LOC 6L	1100-3/4 844 (800-3/4)	1100-2 844 (800-2)		
CIRCLING	1100-1 795 (800-1)	1100-1 1/4 795 (800-1 1/4)	1100-2 1/2 795 (800-2 1/2)	NA

ELEV 305	UNZ	I-GUM SW crs	OBALE I-GUM 14.3	TDZE 256
HIRL all Rwy's				
FAF to MAP 5.4 NM				
Knots	60	90	120	150 180
Min:Sec	5:24	3:36	2:42	2:10 1:48

GUAM, GU
Amdt 4C 25JAN24

13°29'N-144°48'E

GUAM INTL (GUM)(PGUM)
ILS or LOC RWY 6L

PAC, 07 AUG 2025 to 02 OCT 2025

PAC, 07 AUG 2025 to 02 OCT 2025