

ADAK ISLAND, ALASKA

AL-1244 (FAA)

24361

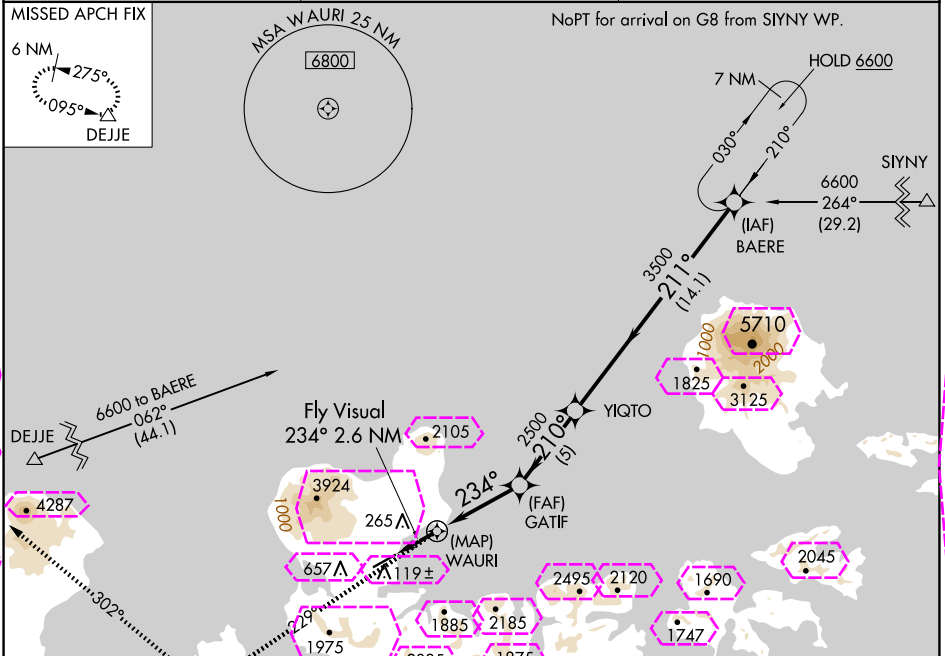
APP CRS	Rwy Idg	6190
234°	TDZE	17
	App Elev	20

# RNAV (GPS) RWY 23

ADAK (ADK)(PADK)

RNP APCH-GPS.	MALS	MISSED APPROACH: Climb to 6600 on course 229° to XERIC, and right turn on course 302° to DEJE and hold.
Circling not authorized at night. Circling NA northwest of Rwy 5-23.		

AWOS-3P 134.5	ANCHORAGE CENTER 126.4 254.3	CTAF 122.9
------------------	---------------------------------	---------------



ELEV 20		TDZE 17
6600	XERIC	DEJE
crs 229°		crs 302°
Fly Visual 234° 2.6 NM	GATIF	BAERE
WAURI	YIQTO	6600
234°	210°	211°
2500	3500	
5 NM	5 NM	14.1 NM
CATEGORY	A	B
C	D	
LNAV MDA	1220-3	1203 (1200-3)
CIRCLING	1220-3	1200 (1200-3)
		NA
REIL Rwy 23		
HIRL Rwy 5-23		

ADAK ISLAND, ALASKA  
Orig-C 19MAY22

51°53'N-176°39'W

ADAK (ADK)(PADK)  
RNAV (GPS) RWY 23

ADAK ISLAND, ALASKA

AL-1244 (FAA)

25219

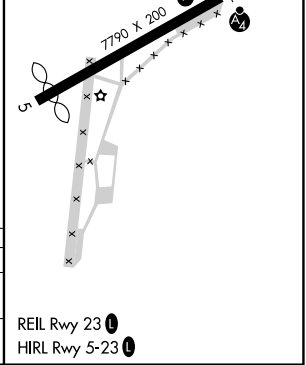
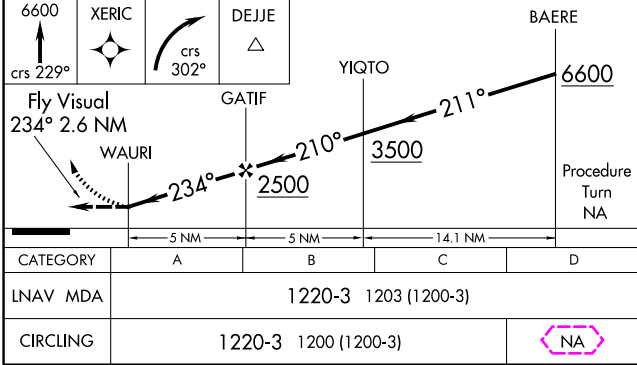
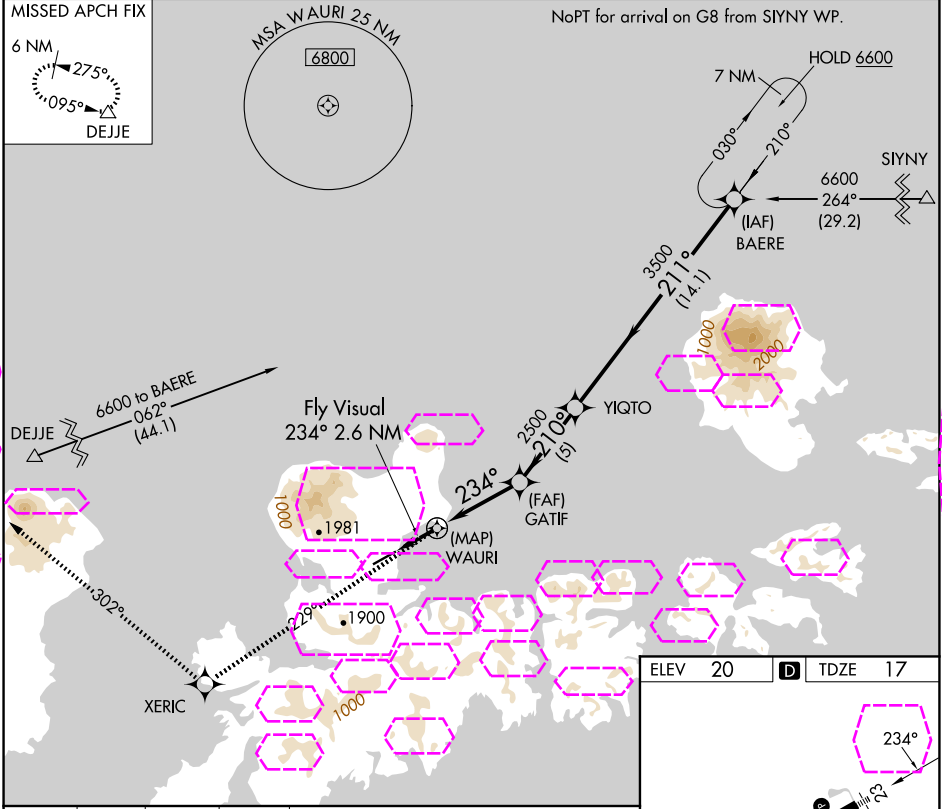
APP CRS	Rwy Ldg	6790
234°	TDZE	17
	App Elev	20

# RNAV (GPS) RWY 23

ADAK (ADK)(PADK)

RNP APCH-GPS.	MALS	MISSED APPROACH: Climb to 6600 on course 229° to XERIC, and right turn on course 302° to DEJE and hold.
⚠ Circling not authorized at night. ⚠ Circling NA northwest of Rwy 5-23.	⚠	

AWOS-3P 134.5	ANCHORAGE CENTER 126.4 254.3	CTAF 122.9 0
------------------	---------------------------------	-----------------



AK, 07 AUG 2025 to 02 OCT 2025

AK, 07 AUG 2025 to 02 OCT 2025

ADAK ISLAND, ALASKA  
Orig-C 19MAY22

51°53'N-176°39'W

# RNAV (GPS) RWY 23

ADAK (ADK)(PADK)