

ADAK ISLAND, ALASKA

AL-1244 (FAA)

24361

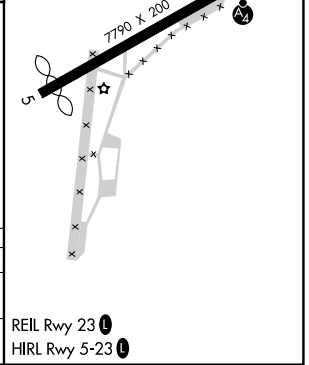
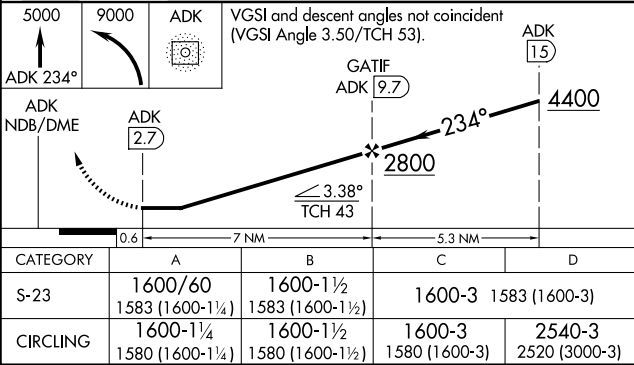
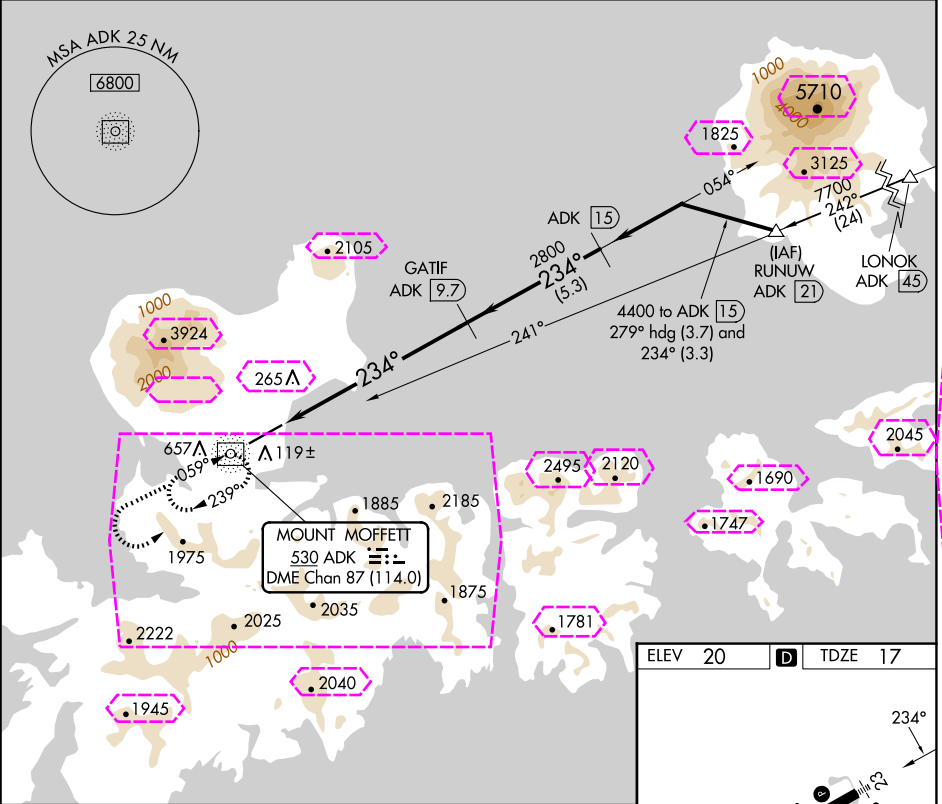
NDB/DME ADK 530	APP CRS 234°	Rwy Idg 6190
Chan 87 (114.0)	TDZE 17	Apt Elev 20

NDB/DME RWY 23

ADAK (ADK)(PADK)

 Circling not authorized at night. Circling NA northwest of Rwy 5-23.	MALS 	MISSED APPROACH: Climb to 5000 via direct ADK NDB/DME and ADK NDB/DME 234° bearing, then climbing left turn to 9000 direct ADK NDB/DME and hold.
--	---	--

AWOS-3P 134.5	ANCHORAGE CENTER 126.4 254.3	CTAF 122.9
-------------------------	--	----------------------



ADAK ISLAND, ALASKA
Orig-C 14JUL22

51°53'N-176°39'W

ADAK (ADK)(PADK) NDB/DME RWY 23

AK, 12 JUN 2025 to 07 AUG 2025

AK, 12 JUN 2025 to 07 AUG 2025

ADAK ISLAND, ALASKA

AL-1244 (FAA)

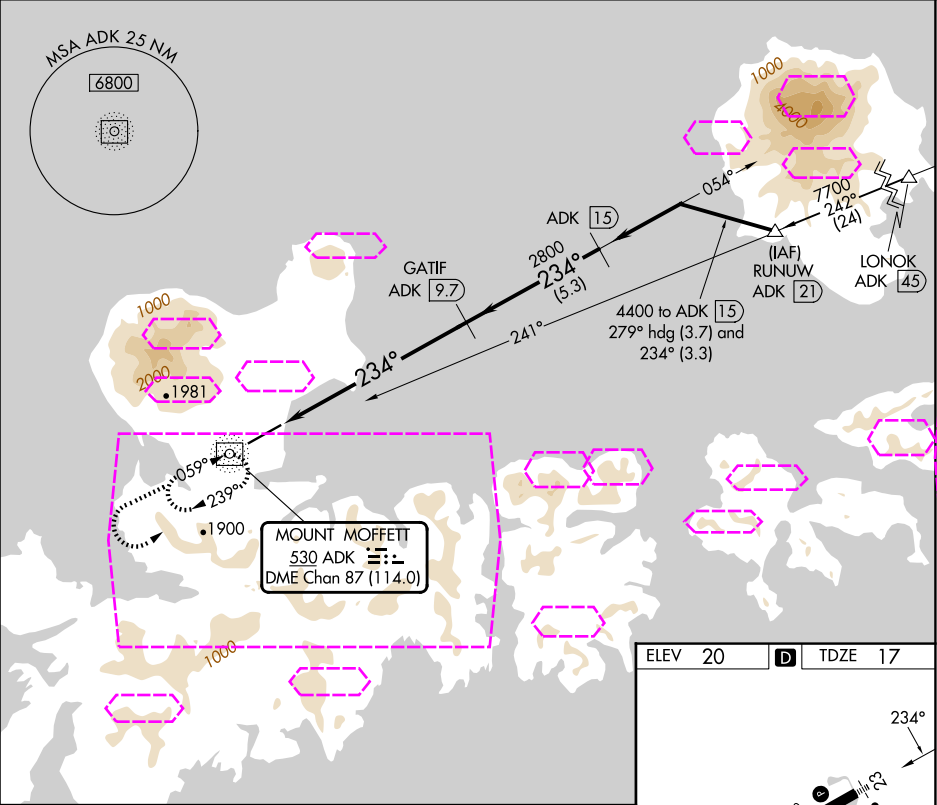
25219

NDB/DME ADK 530	APP CRS 234°	Rwy Ldg 6790
Chan 87 (114.0)	TDZE 17	Apt Elev 20

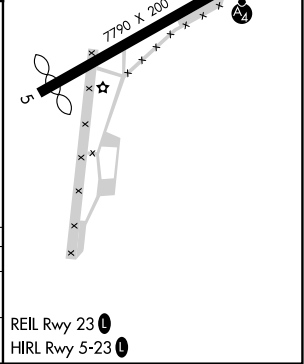
NDB/DME RWY 23
ADAK (ADK)(PADK)

 Circling not authorized at night. Circling NA northwest of Rwy 5-23.	MALS 	MISSED APPROACH: Climb to 5000 via direct ADK NDB/DME and ADK NDB/DME 234° bearing, then climbing left turn to 9000 direct ADK NDB/DME and hold.
--	---	--

AWOS-3P 134.5	ANCHORAGE CENTER 126.4 254.3	CTAF 122.9
-------------------------	--	----------------------



5000 ↑ ADK 234°	9000 ↖ ADK	VGSI and descent angles not coincident (VGSI Angle 3.50/TCH 53).	ADK 15
ADK NDB/DME	ADK 2.7	GATIF ADK 9.7	4400
2800			
≤ 3.38° TCH 43			
0.6 7 NM 5.3 NM			
CATEGORY	A	B	C D
S-23	1600/60 1583 (1600-1¼)	1600-1½ 1583 (1600-1½)	1600-3 1583 (1600-3)
CIRCLING	1600-1¼ 1580 (1600-1¼)	1600-1½ 1580 (1600-1½)	1600-3 2540-3 1580 (1600-3) 2520 (3000-3)



ADAK ISLAND, ALASKA
Orig-C 14JUL22

51°53'N-176°39'W

ADAK (ADK)(PADK)
NDB/DME RWY 23