

ADAK ISLAND, ALASKA

AL-1244 (FAA)

24361

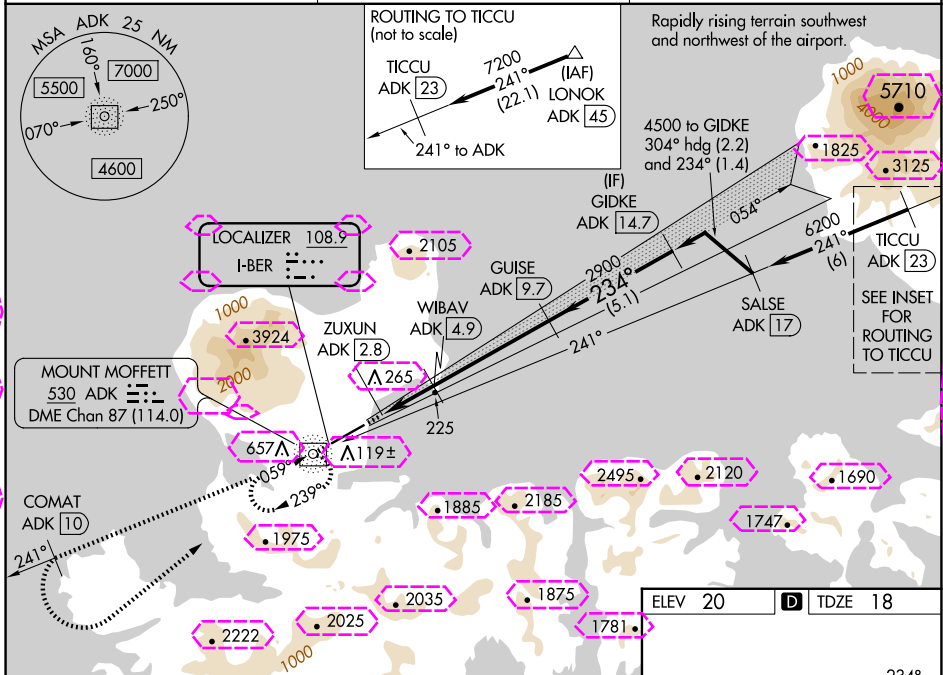
LOC I-BER	APP CRS	Rwy Idg
108.9	234°	6190
	TDZE	18
	Apt Elev	20


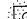

# ILS Z or LOC Z RWY 23

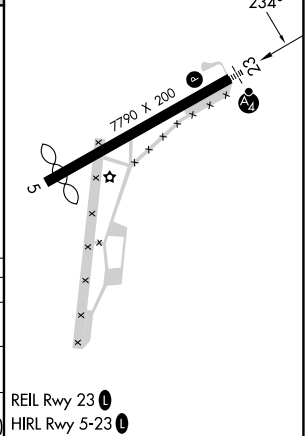
ADAK (ADK) (PADK)

ADF and DME required.	MALS	MISSED APPROACH: Climb to 5400 direct ADK NDB/DME and on the 241° bearing from ADK NDB/DME to COMAT/ADK 10 DME and left turn direct ADK NDB/DME and hold. Missed approach requires minimum climb of 409 feet per NM to 2700; if unable to meet climb gradient, see ILS Y or LOC Y RWY 23.
⚠ Circling NA at night. Circling NA northwest of Rwy 5-23. Rwy 23 helicopter visibility reduction below ¾ SM NA. DME from ADK NDB. Simultaneous reception of I-BER and ADK DME required. Cat E for USAF/USN use only.		

AWOS-3P 134.5	ANCHORAGE CENTER 126.4 254.3	CTAF 122.9
------------------	---------------------------------	---------------



5400 ↑	ADK 	ADK 241°	COMAT ADK <u>10</u>	ADK 			
*LOC only					GUISE ADK <u>9.7</u>	GIDKE ADK <u>14.7</u>	
ADK NDB/DME	ZUXUN ADK <u>2.8</u>		WIBAV ADK <u>4.9</u>	2900	234°	4500	
760*				2900		GS 3.50°	
0.8				2.1 NM	4.7 NM	5.1 NM	TCH 53
CATEGORY	A		B	C	D	E	
S-ILS 23	309/50 291 (300-1)						
S-LOC 23	480/55 462 (500-1)			480-1 $\frac{3}{8}$ 462 (500-1 $\frac{3}{8}$ )			
 CIRCLING	720-1 700 (700-1)			1060-3 1040 (1100-3)	2400-3 2380 (2400-3)	2440-3 2420 (2500-3)	



ADAK ISLAND, ALASKA  
Orig 05DEC19

51°53'N-176°39'W

# ILS Z or LOC Z RWY 23

ADAK (ADK) (PADK)

LOC I-BER <b><u>108.9</u></b>	APP CRS <b>234°</b>	Rwy Ldg <b>6790</b> TDZE <b>18</b> Apt Elev <b>20</b>
----------------------------------	------------------------	---

ILS Z or LOC Z RWY 23  
ADAK (ADK) (PADK)

ADF and DME required.

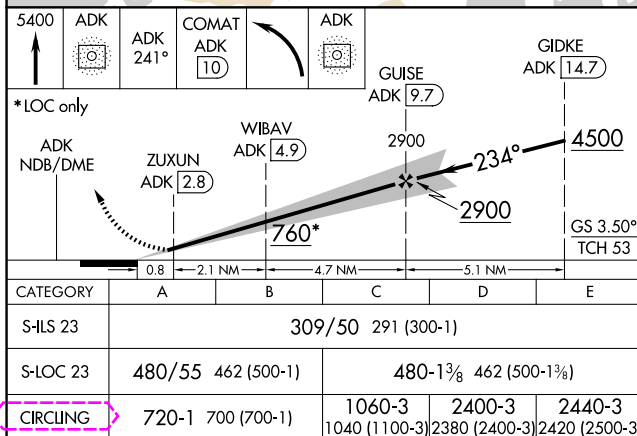
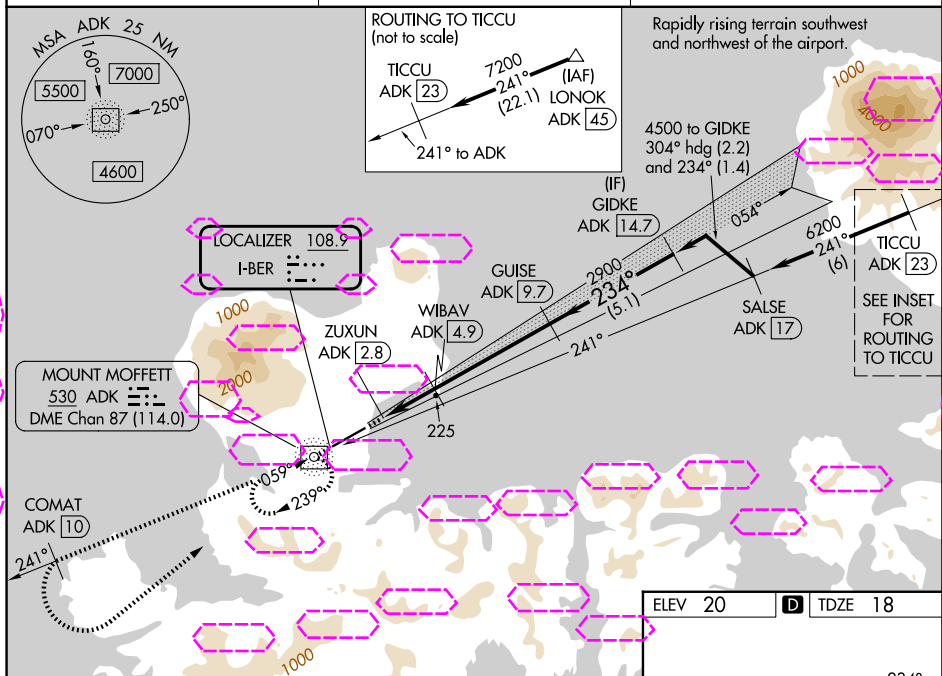
**V** Circling NA at night. Circling NA northwest of Rwy 5-23.  
**A** Rwy 23 helicopter visibility reduction below  $\frac{3}{4}$  SM NA.  
DME from ADK NDB. Simultaneous reception of I-BER  
and ADK DME required. Cat E for USAF/USN use only.

MALS

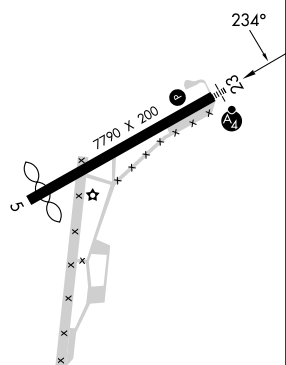
**MISSED APPROACH:** Climb to 5400 direct ADK NDB/DME and on the 241° bearing from ADK NDB/DME to COMAT/ADK 10 DME and left turn direct ADK NDB/DME and hold. Missed approach requires minimum climb of 409 feet per NM to 2700; if unable to meet climb gradient, see ILS Y or LOC Y RWY 23.

AWOS-3P  
134.5

ANCHORAGE CENTER  
126.4 254.3

CTAF  
122.9 **L**

ELEV 20	<b>D</b>	TDZE 18
---------	----------	---------



ADAK ISLAND, ALASKA  
Orig 05DEC19

51°53'N-176°39'W

ADAK (ADK) (PADK)

ILS Z or LOC Z RWY 23

AK, 07 AUG 2025 to 02 OCT 2025

AK, 07 AUG 2025 to 02 OCT 2025