

ADAK ISLAND, ALASKA

AL-1244 (FAA)

24361

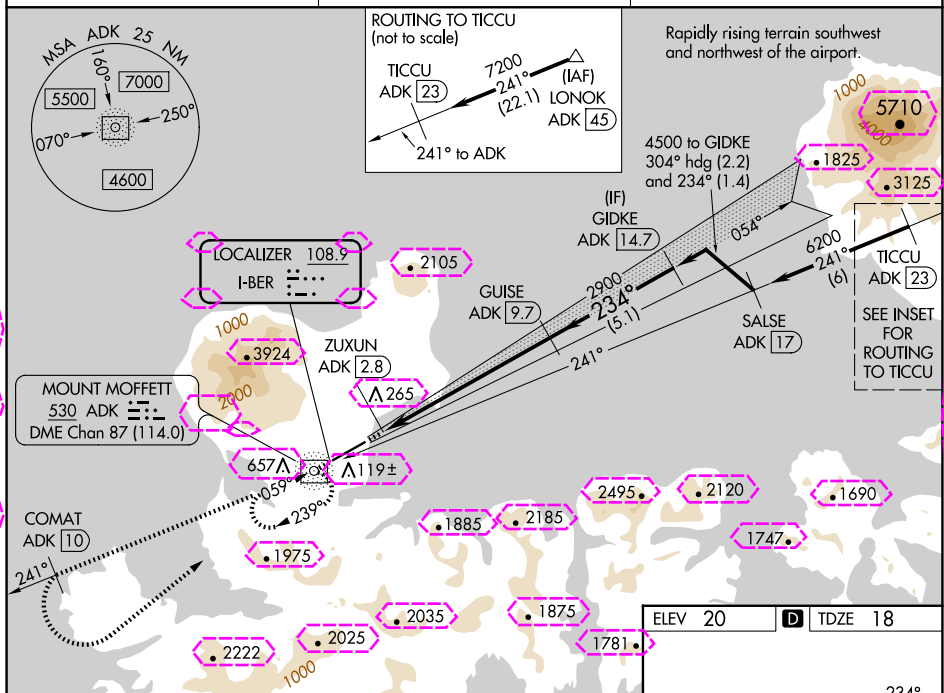
LOC I-BER	APP CRS	Rwy Idg
108.9	234°	6190
	TDZE	18
	Apt Elev	20

ILS Y or LOC Y RWY 23

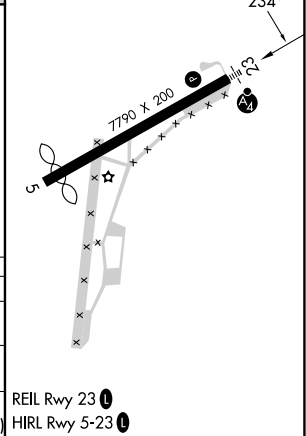
ADAK (ADK) (PADK)

ADF and DME required.	MALS	MISSED APPROACH: Climb to 5400 direct ADK NDB/DME and on the 241° bearing from ADK NDB/DME to COMAT/ADK 10 DME and left turn direct ADK NDB/DME and hold.
<p>▼ Circling NA at night. Circling NA northwest of Rwy 5-23.</p> <p>▲ Rwy 23 helicopter visibility reduction below ¾ SM NA.</p> <p>DME from ADK NDB/DME. Simultaneous reception of I-BER and ADK DME required. Cat E for USAF/USN use only.</p>		

AWOS-3P 134.5	ANCHORAGE CENTER 126.4 254.3	CTAF 122.9 0
------------------	---------------------------------	-----------------



5400	ADK	ADK	COMAT	ADK	ADK
↑	241°	10	9.7	14.7	
*LOC only					
ADK NDB/DME	ZUXUN	*ADK	2900	4500	
	ADK 2.8	5.9			
			2900	2900	
				GS 3.50°	
				TCH 53	
	0.8	3.1 NM	3.8 NM	5.1 NM	
CATEGORY	A	B	C	D	E
S-ILS 23	1572-5 1554 (1600-5)				
S-LOC 23	1520-1¼ 1502 (1500-1¼)	1520-1½ 1502 (1500-1½)	1520-3 1502 (1500-3)		
CIRCLING	1520-1¼ 1500 (1500-1¼)	1520-1½ 1500 (1500-1½)	1520-3 1500 (1500-3)	2400-3 2380 (2400-3)	2440-3 2420 (2500-3)



ADAK ISLAND, ALASKA
Orig 05DEC19

51°53'N-176°39'W

ILS Y or LOC Y RWY 23

ADAK (ADK) (PADK)

AK, 12 JUN 2025 to 07 AUG 2025

AK, 12 JUN 2025 to 07 AUG 2025

LOC I-BER 108.9	APP CRS 234°	Rwy Ldg 6790
		TDZE 18
		Apt Elev 20

ILS Y or LOC Y RWY 23
ADAK (ADK) (PADK)

ADF and DMF required

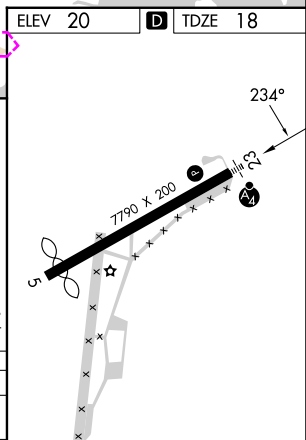
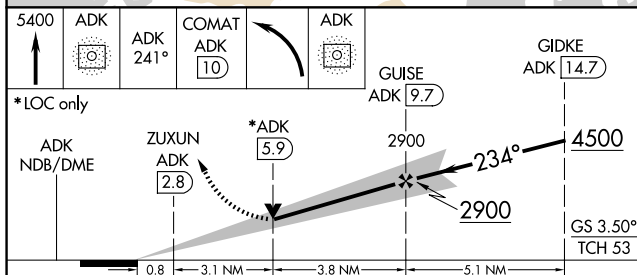
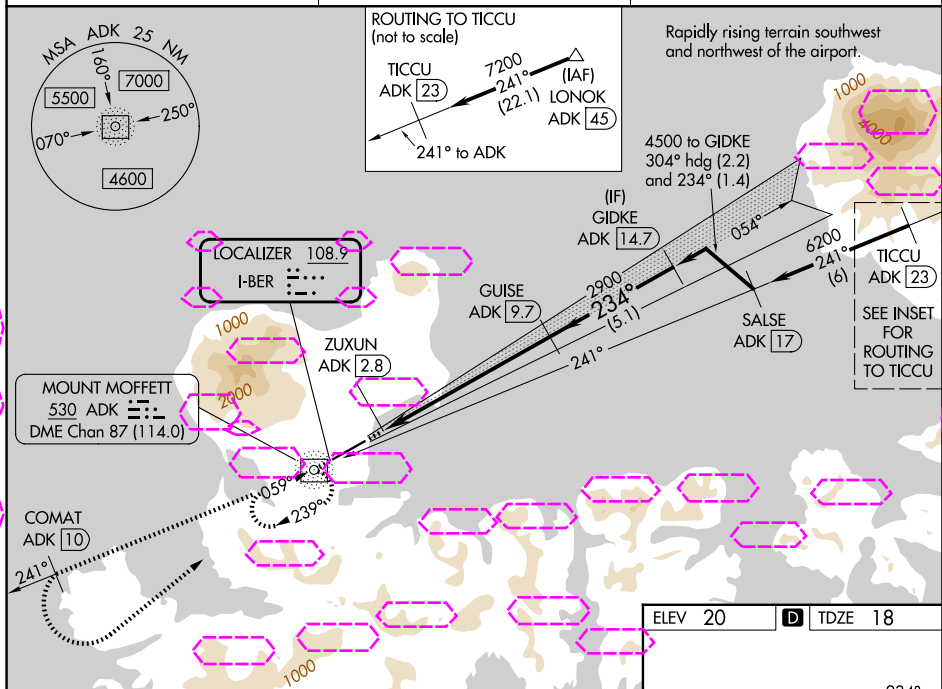
T Circling NA at night. Circling NA northwest of Rwy 5-23.
A Rwy 23 helicopter visibility reduction below $\frac{3}{4}$ SM NA.
DME from ADK NDB/DME. Simultaneous reception of I-BE
and ADK DME required. Cat E for USAF/USN use only.

MALS

MISSED APPROACH: Climb to 5400 direct ADK NDB/DME and on the 241° bearing from ADK NDB/DME to COMAT/ADK 10 DME and left turn direct ADK NDB/DME and hold.

AWOS-3P
134.5

ANCHORAGE CENTER
126.4 254.3

CTAF
122.9 **L**

CATEGORY	A	B	C	D	E
S-ILS 23	1572-5 1554 (1600-5)				
S-LOC 23	1520-1¼ 1502 (1500-1¼)	1520-1½ 1502 (1500-1½)	1520-3 1502 (1500-3)		
CIRCLING	1520-1¼ 1500 (1500-1¼)	1520-1½ 1500 (1500-1½)	1520-3 1500 (1500-3)	2400-3 2380 (2400-3)	2440-3 2420 (2500-3)

ADAK ISLAND, ALASKA
Orig 05DEC19

51°53'N-176°39'W

ILS Y or LOC Y RWY 23

AK, 07 AUG 2025 to 02 OCT 2025

AK, 07 AUG 2025 to 02 OCT 2025