

COLD BAY, ALASKA

AL-1241 (FAA)

25051

VORTAC CDB	APP CRS	Rwy Idg	10179
112.6	145°	TDZE	75
Chan 73		Apt Elev	100

VOR RWY 15

COLD BAY (CDB) (PACD)

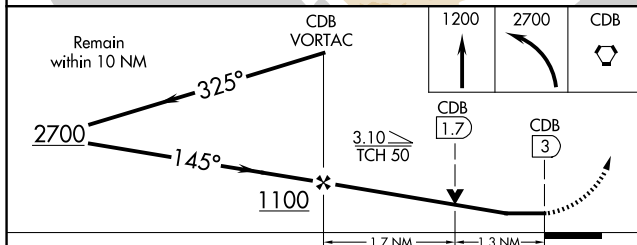
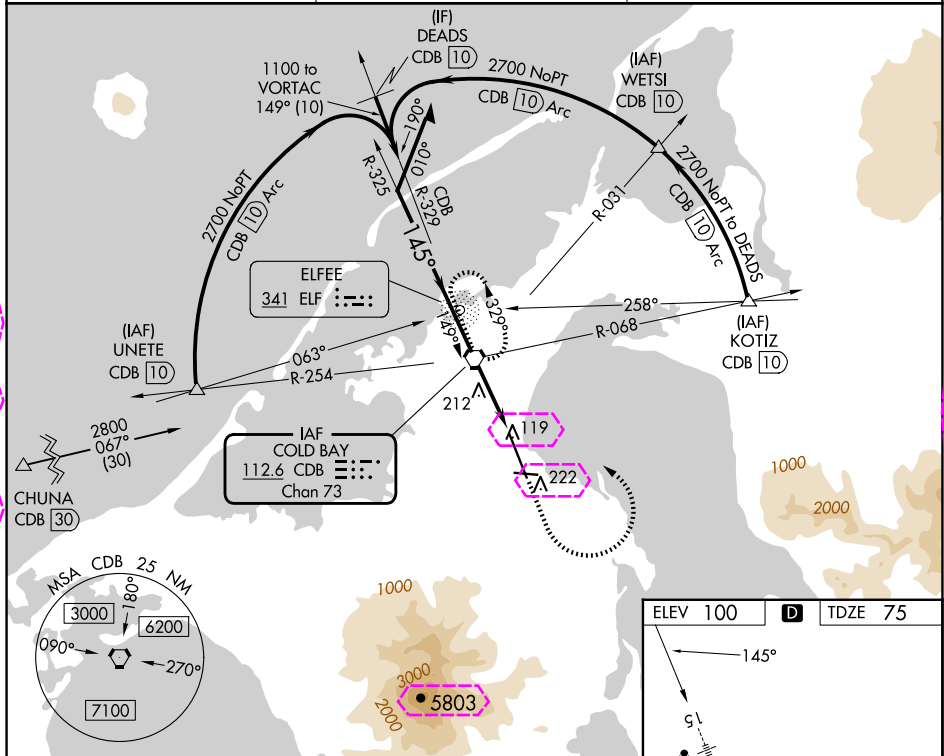
DME required.

⚠ Circling NA for Cat A southwest of Rwy 15-33 at night.
DME values will decrease then increase prior to reaching missed approach point. For inop ALS, increase S-15 Cats C and D visibility to RVR 6000. Circling NA for Cats B/C/D southwest of Rwy 15-33

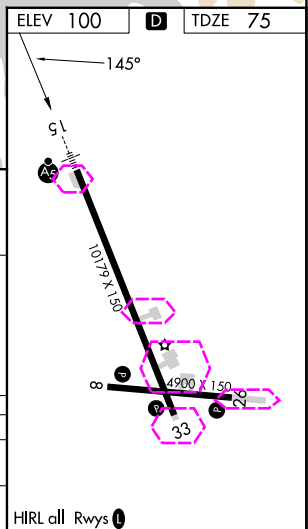
MALSR
AS

MISSED APPROACH: Climb to 1200 then climbing left turn to 2700 direct CDB VORTAC and hold; continue climb-in-hold to 2700.

ASOS 135.75	ANCHORAGE CENTER 118.5 278.3	COLD BAY RADIO★ 123.6 (CTAF) 0
----------------	---------------------------------	-----------------------------------



CATEGORY	A	B	C	D
S-15	480/24	405 (400-½)	480/40	405 (400-¾)
CIRCLING	540-1 440 (500-1)	560-1 460 (500-1)	560-1½ 460 (500-1½)	860-2½ 760 (800-2½)



COLD BAY, ALASKA
Amdt 16 05NOV20

55°12'N-162°44'W


COLD BAY (CDB) (PACD)
VOR RWY 15

AK, 12 JUN 2025 to 07 AUG 2025

AK, 12 JUN 2025 to 07 AUG 2025

VORTAC CDB <u>112.6</u> Chan 73	APP CRS 145°	Rwy Ldg 10179 TDZE 75 Apt Elev 100
---------------------------------------	-----------------	--

VOR RWY 15
COLD BAY (CDB) (PACD)

<p>DME required.</p> <p>T Circling NA for Cat A southwest of Rwy 15-33 at night.</p> <p>A DME values will decrease then increase prior to reaching missed approach point. For inop ALS, increase S-15 Cats C and D visibility to RVR 6000. Circling NA for Cats B/C/D southwest of Rwy 15-33</p>	<p>MALSR</p> 	<p>MISSED APPROACH: Climb to 1200 then climbing left turn to 2700 direct CDB VORTAC and hold; continue climb-in-hold to 2700.</p>
--	--	---

ASOS 135.75	ANCHORAGE CENTER 118.5 278.3	COLD BAY RADIO 123.6 (CTAF) 0
-----------------------	--	---

