

AK, 12 JUN 2025 to 07 AUG 2025

COLD BAY, ALASKA

AL-1241 (FAA)

25219

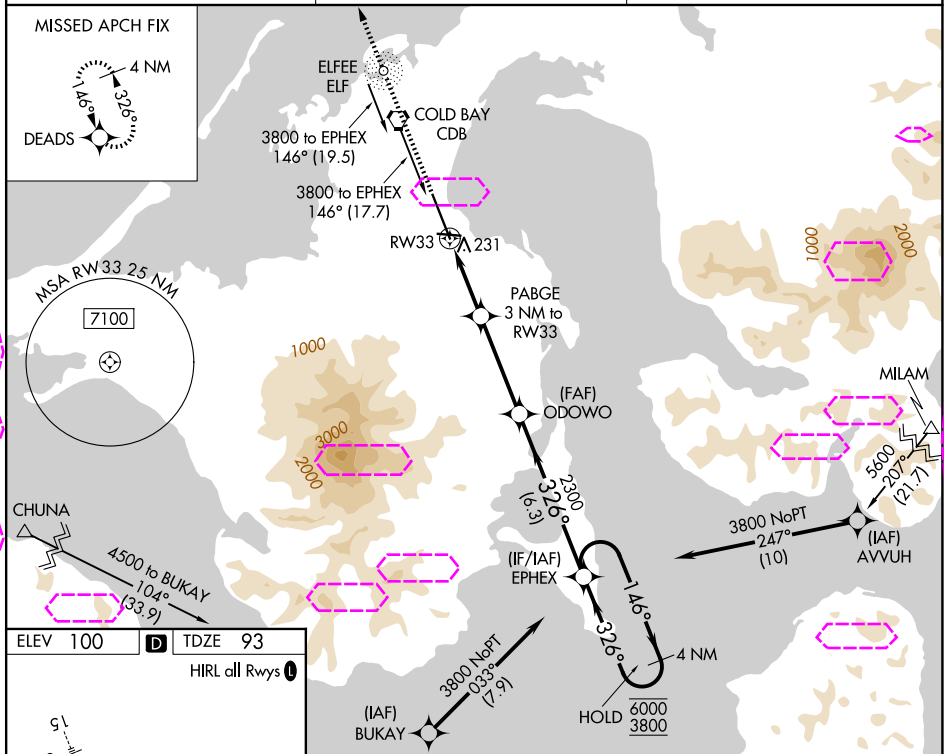
WAAS CH 49106 W33A	APP CRS 326°	Rwy Ldg 10179 TDZE 93 Apt Elev 100
--	------------------------	---

RNAV (GPS) RWY 33

COLD BAY (CDB) (PACD)

RNP APCH. ▼ For uncompensated Baro-VNAV systems, LNAV/VNAV NA below -10°C or above 54°C. Circling NA for Cat A southwest of Rwy 15-33 at night. Circling NA for Cat B/C/D southwest of Rwy 15-33. ▲	MISSED APPROACH: Climb to 3000 direct DEADS and hold.
---	---

ASOS 135.75	ANCHORAGE CENTER 118.5 278.3	COLD BAY RADIO 123.6 (CTAF) 0
-----------------------	--	---



3000

↑

DEADS

✦

VGSI and RNAV glidepath not coincident
(VGSI Angle 3.00/TCH 36).

*LNAV only

RW33

1.2 NM

PABGE

3 NM to RW33

ODOWO

2300

EPHEX

4 NM Holding Pattern

146° →

← 326°

6000

3800

GP 3.00°

TCH 55

1100*

2300

1.2 NM

1.8 NM

3.8 NM

6.3 NM

CATEGORY	A	B	C	D
LPV DA	293-¾ 200 (200-¾)			
LNAV/VNAV DA	392-⅞ 299 (300-⅞)			
LNAV MDA	500-1 407 (400-1)		500-1⅛ 407 (400-1⅛)	
CIRCLING	540-1 440 (500-1)	560-1 460 (500-1)	560-1½ 460 (500-1½)	860-2½ 760 (800-2½)

COLD BAY, ALASKA

Amdt 3 10SEP20

55°12'N-162°44'W

RNAV (GPS) RWY 33