

COLD BAY, ALASKA

AL-1241 (FAA)

25051

WAAS CH 42730 W26A	APP CRS 248°	Rwy Idg TDZE Apt Elev	4900 100 100
--	------------------------	-----------------------------	---

RNAV (GPS) RWY 26

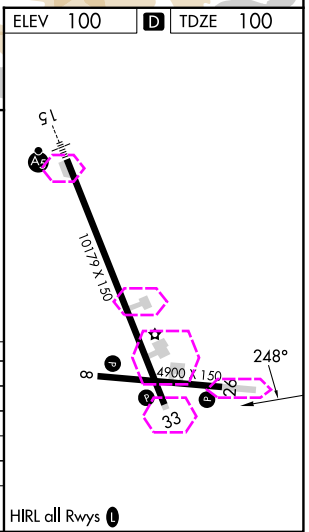
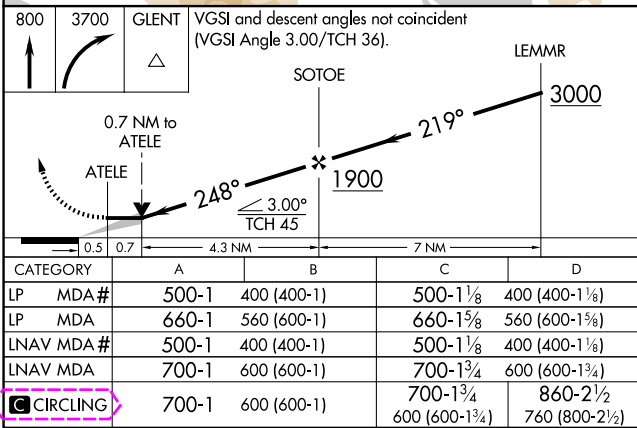
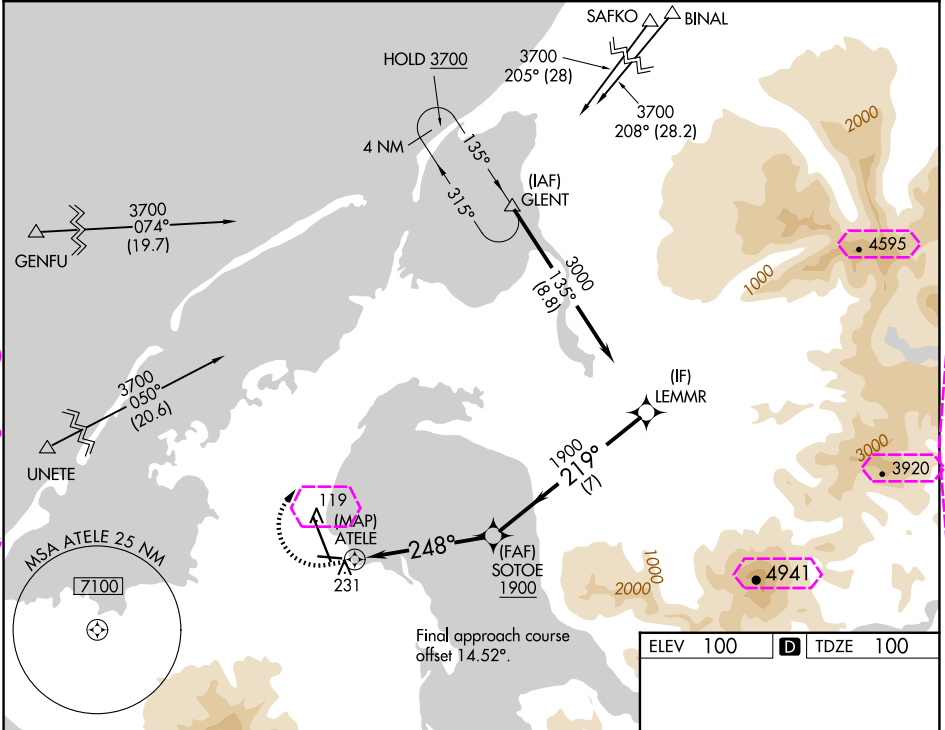
COLD BAY (CDB) (PACD)

RNP APCH.

Circling NA for Cat B, C, and D southwest of Rwy 15-33.

MISSED APPROACH: Climb to 800 then climbing right turn to 3700 direct GLENT and hold, continue climb-in-hold to 3700.
Missed approach requires a minimum climb of 280 feet per NM to 1180.

ASOS 135.75	ANCHORAGE CENTER 118.5 278.3	COLD BAY RADIO 123.6 (CTAF) 0
-----------------------	--	---



AK, 12 JUN 2025 to 07 AUG 2025

AK, 12 JUN 2025 to 07 AUG 2025

COLD BAY, ALASKA
Amdt 4 20JUN19

55°12'N-162°44'W

RNAV (GPS) RWY 26

COLD BAY (CDB) (PACD)

COLD BAY, ALASKA

AL-1241 (FAA)

25219

WAAS CH 42730 W26A	APP CRS 248°	Rwy Ldg TDZE Apt Elev	4900 100 100
--	------------------------	-----------------------------	---

RNAV (GPS) RWY 26

COLD BAY (CDB) (PACD)

RNP APCH.

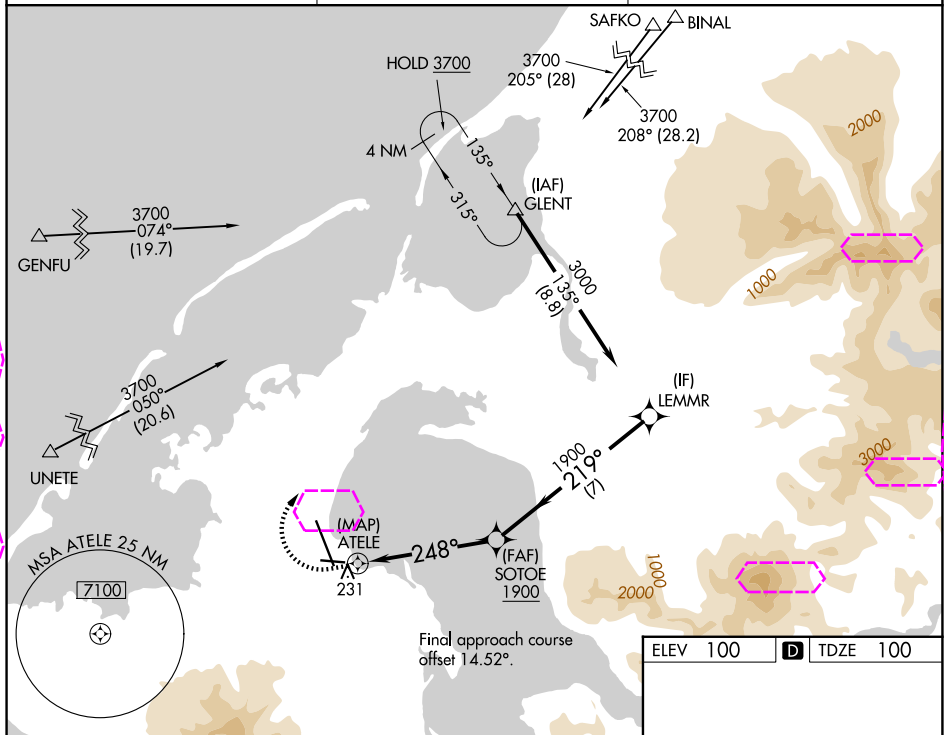
⚠ Circling NA for Cat B, C, and D southwest of Rwy 15-33.

MISSED APPROACH: Climb to 800 then climbing right turn to 3700 direct GLENT and hold, continue climb-in-hold to 3700.
Missed approach requires a minimum climb of 280 feet per NM to 1180.

ASOS
135.75

ANCHORAGE CENTER
118.5 278.3

COLD BAY RADIO
123.6 (CTAF) 0



800

3700

GLENT

800

3700

GLENT

800

3700

GLENT

800

3700

GLENT

800

3700

GLENT

800

3700

GLENT

800

3700

GLENT

800

3700

GLENT

800

3700

GLENT

800

3700

GLENT

800

3700

GLENT

800

3700

GLENT

800

3700

GLENT

800

3700

GLENT

800

3700

GLENT

800

3700

GLENT

800

3700

GLENT

800

3700

GLENT

800

3700

GLENT

800

3700

GLENT

800

3700

GLENT

800

3700

GLENT

800

3700

GLENT

800

3700

GLENT

800

3700

GLENT

800

3700

GLENT

800

3700

GLENT

800

3700

GLENT

800

3700

GLENT

800

3700

GLENT

800

3700

GLENT

800

3700

GLENT

800

3700

GLENT

800

3700

GLENT

800

3700

GLENT

800

3700

GLENT

800

3700

GLENT

800

3700

GLENT

800

3700

GLENT

800

3700

GLENT

800

3700

GLENT

800

3700

GLENT

800

3700

GLENT

800

3700

GLENT

800

3700

GLENT

800

3700

GLENT

800

3700

GLENT

800

3700

GLENT

800

3700

GLENT

800

3700

GLENT

800

3700

GLENT

800

3700

GLENT

800

3700

GLENT

800

3700

GLENT

800

3700

GLENT

800

3700

GLENT

800

3700

GLENT

800

3700

GLENT

800

3700

GLENT

800

3700

GLENT

800

3700

GLENT

800

3700

GLENT

800

3700

GLENT

800

3700

GLENT

800

3700

GLENT

800

3700

GLENT

800

3700

GLENT

800

3700

GLENT

800

3700

GLENT

800

3700

GLENT

800

3700

GLENT

800

3700

GLENT

800

3700

GLENT

800

3700

GLENT

800

3700

GLENT

800

3700

GLENT

800

3700

GLENT

800

3700

GLENT

800

3700

GLENT

800

3700

GLENT

800

3700

GLENT

800

3700

GLENT

800

3700

GLENT

800

3700

GLENT

800

3700

GLENT

800

3700

GLENT

800

3700

GLENT

800

3700

GLENT

800

3700

GLENT

800

3700

GLENT

800

3700

GLENT

800

3700

GLENT

800

3700

GLENT

800

3700

GLENT

800

3700

GLENT

800

3700

GLENT

800

3700

GLENT

800

3700

GLENT

800

3700

GLENT

800

3700

GLENT

800

3700

GLENT

800

3700

GLENT

800

3700

GLENT

800

3700

GLENT

800

3700

GLENT

800

3700

GLENT

800

3700

GLENT

800

3700

GLENT

800

3700

GLENT

800

3700

GLENT

800

3700

GLENT

800

3700

GLENT

800

3700

GLENT

800

3700

GLENT

800

3700

GLENT

800

3700

GLENT

800

3700

GLENT

800

3700

GLENT

800

3700

GLENT

800

3700

GLENT

800

3700

GLENT

800

3700

GLENT

800

3700

GLENT

800

3700

GLENT

800

3700

GLENT

800

3700

GLENT

800

3700

GLENT

800

3700

GLENT

800

3700

GLENT

800

3700

GLENT

800

3700

GLENT

800

3700

GLENT

800

3700

GLENT

800

3700

GLENT

800

3700

GLENT

800

3700

GLENT

800

3700

GLENT

800

3700

GLENT

800

3700

GLENT

800

3700

GLENT

800

3700

GLENT

800

3700

GLENT

800

3700

GLENT

800

3700

GLENT

800

3700

GLENT

800

3700

GLENT

800

3700

GLENT

800

3700

GLENT

800

3700

GLENT

800

3700

GLENT

800

3700

GLENT

800

3700

GLENT

800

3700

GLENT

800

3700

GLENT

800

3700

GLENT

800

3700

GLENT

800

3700

GLENT

800

3700

GLENT

800

3700

GLENT

800

3700

GLENT

800

3700

GLENT

800

3700

GLENT

800

3700

GLENT

800

3700

GLENT

800

3700

GLENT

800

3700

GLENT

800

3700

GLENT

800

3700

GLENT

800

3700

GLENT

800

3700

GLENT

800

3700

GLENT

800

3700

GLENT

800

3700

GLENT

800

3700

GLENT

800

3700

GLENT

800

3700

GLENT

800

3700

GLENT

800

3700

GLENT

800

3700

GLENT

800

3700

GLENT

800

3700

GLENT

800

3700

GLENT

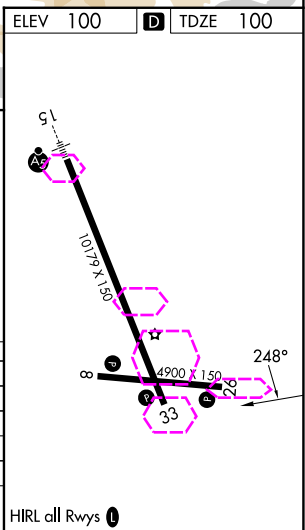
800

3700

GLENT

800

37



COLD BAY, ALASKA
Amdt 4 20JUN19

55°12'N-162°44'W

RNAV (GPS) RWY 26

COLD BAY (CDB) (PACD)