

COLD BAY, ALASKA

AL-1241 (FAA)

25051

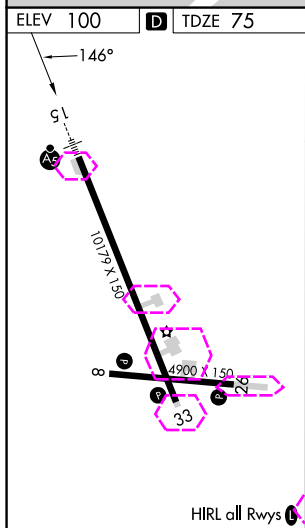
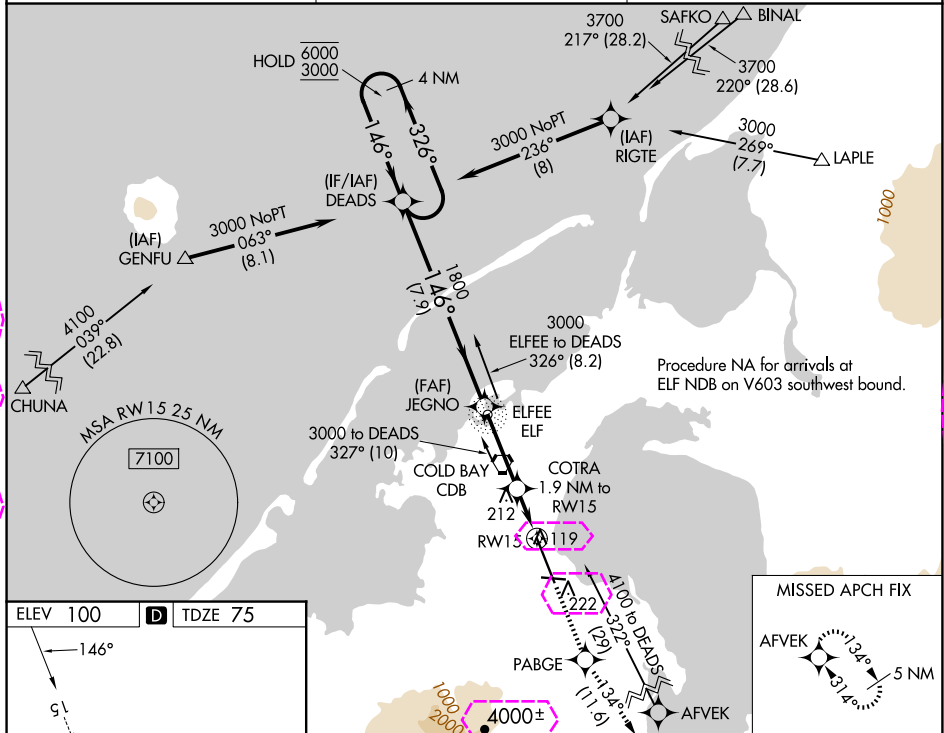
WAAS CH 45612 W15A	APP CRS 146°	Rwy Idg 10179 TDZE 75 Apt Elev 100
--	------------------------	---

RNAV (GPS) RWY 15

COLD BAY (CDB) (PACD)

RNP APCH. ⚠ For uncompensated Baro-VNAV systems, LNAV/VNAV NA below -10°C or above 54°C. Circling NA for Cat A southwest of Rwy 15-33 at night. Circling NA for Cats B/C/D southwest of Rwy 15-33. For inop ALS, increase LNAV/VNAV all Cats visibility to RVR 4000 and LNAV Cat C/D visibility to RVR 6000. #RVR 1800 authorized with use of FD or AP or HUD to DA.	MALSR 	MISSED APPROACH: Climb to 4100 direct PABGE and on track 134° to AFVEK and hold, continue climb-in-hold to 4100.
--	-----------	--

ASOS 135.75	ANCHORAGE CENTER 118.5 278.3	COLD BAY RADIO 123.6 (CTAF) 0
-----------------------	--	---



DEADS				4100	PABGE	tr 134°	AFVEK
4 NM Holding Pattern				↑	⬠	↑	⬠
6000 ← 326° 3000 → 146°				COTRA 1.9 NM to RW15 RW15 to RW15 *760			
GP 3.10° TCH 55				*LNAV only			
7.9 NM				0.8 NM			
3.2 NM				1.1 NM			
CATEGORY	A	B	C	D			
LPV DA#	275/24		200 (200-½)				
LNAV/VNAV DA	325/24		250 (300-½)				
LNAV MDA	480/24		405 (400-½)				
	540-1		560-1				
	440 (500-1)		460 (500-1)				
	560-1½		860-2½				
	460 (500-1½)		760 (800-2½)				

COLD BAY, ALASKA

Amtd 3 10SEP20

55°12'N-162°44'W

COLD BAY (CDB) (PACD)

RNAV (GPS) RWY 15

AK, 12 JUN 2025 to 07 AUG 2025

AK, 12 JUN 2025 to 07 AUG 2025

COLD BAY, ALASKA

AL-1241 (FAA)

25219

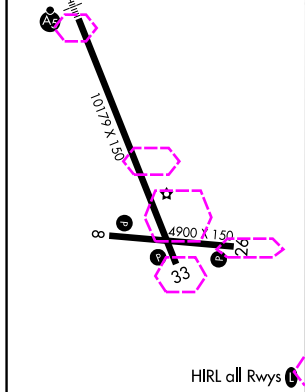
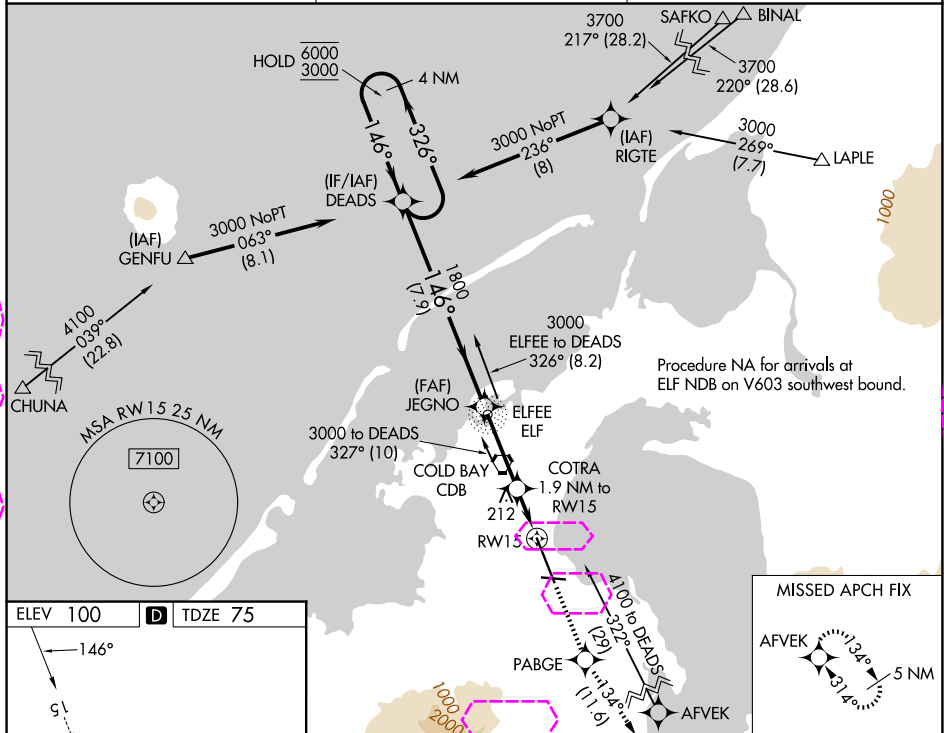
WAAS CH 45612 W15A	APP CRS 146°	Rwy Ldg 10179 TDZE 75 Apt Elev 100
--	------------------------	---

RNAV (GPS) RWY 15

COLD BAY (CDB) (PACD)

RNP APCH. ⚠ For uncompensated Baro-VNAV systems, LNAV/VNAV NA below -10°C or above 54°C. Circling NA for Cat A southwest of Rwy 15-33 at night. Circling NA for Cats B/C/D southwest of Rwy 15-33. For inop ALS, increase LNAV/VNAV all Cats visibility to RVR 4000 and LNAV Cat C/D visibility to RVR 6000. #RVR 1800 authorized with use of FD or AP or HUD to DA.	MALSR AS	MISSED APPROACH: Climb to 4100 direct PABGE and on track 134° to AFVEK and hold, continue climb-in-hold to 4100.
--	-------------	--

ASOS 135.75	ANCHORAGE CENTER 118.5 278.3	COLD BAY RADIO 123.6 (CTAF) 0
-----------------------	--	---



DEADS				4100	PABGE	tr 134°	AFVEK
4 NM Holding Pattern				↑	✱	✱	✱
6000 ← 326° 3000 → 146°				COTRA 1.9 NM to *1.1 NM RW15 to RW15 *760			
GP 3.10° TCH 55				*LNAV only			
7.9 NM				RW15			
3.2 NM				0.8 NM			
1.1 NM				1.1 NM			
CATEGORY				A			
LPV DA#				275/24 200 (200-½)			
LNAV/VNAV DA				325/24 250 (300-½)			
LNAV MDA				480/24 405 (400-½)			
540-1				560-1			
440 (500-1)				560-1½			
460 (500-1)				860-2½			
460 (500-1½)				760 (800-2½)			

COLD BAY, ALASKA

Amtd 3 10SEP20

55°12'N-162°44'W

COLD BAY (CDB) (PACD)

RNAV (GPS) RWY 15

AK, 07 AUG 2025 to 02 OCT 2025

AK, 07 AUG 2025 to 02 OCT 2025