

COLD BAY, ALASKA

AL-1241 (FAA)

25051

LOC I-CDB 110.3	APP CRS 326°	Rwy Idg 10179 TDZE 93 Apt Elev 100
---------------------------	------------------------	---

LOC BC RWY 33

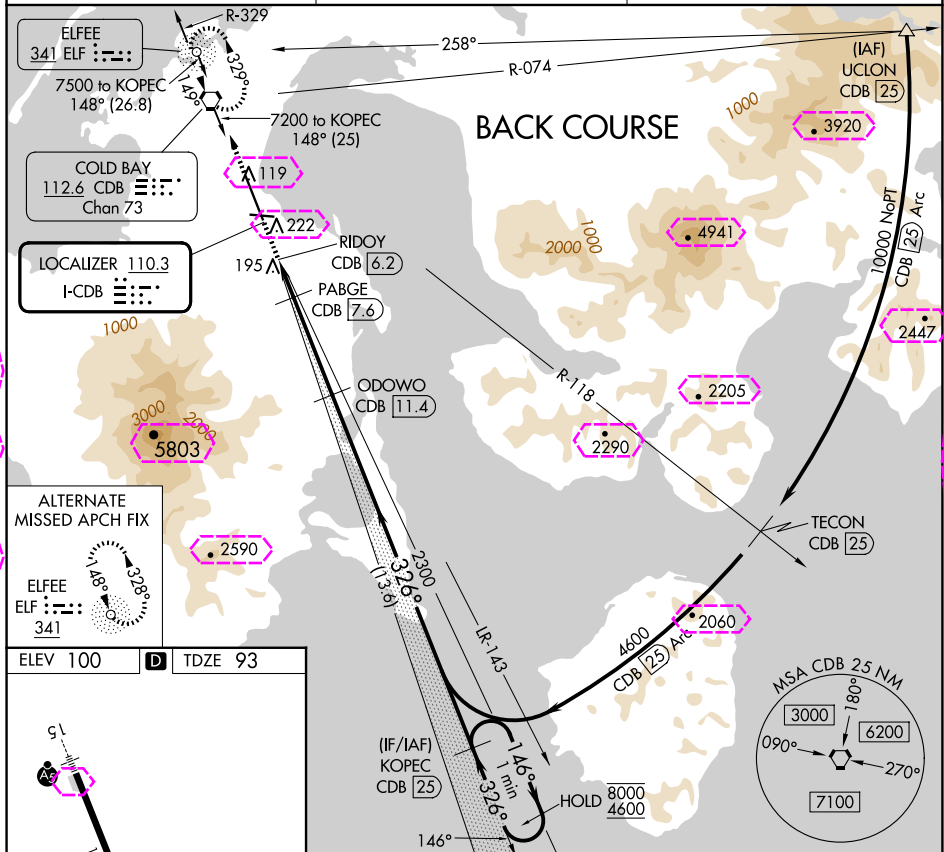
COLD BAY (CDB) (PACD)

DME required.

- ⚠ Circling NA for Cat A southwest of Rwy 15-33 at night. DME from CDB VORTAC.
⚠ Simultaneous reception of I-CDB and CDB DME required. Circling NA for Cats B/C/D southwest of Rwy 15-33.

MISSED APPROACH: Climb to 4000
direct CDB VORTAC and hold,
continue climb-in-hold to 4000.

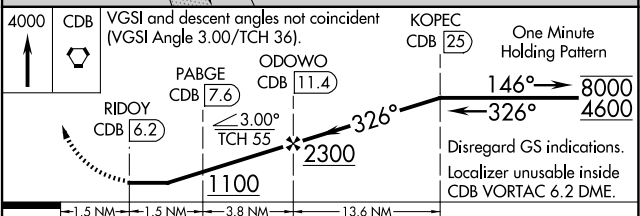
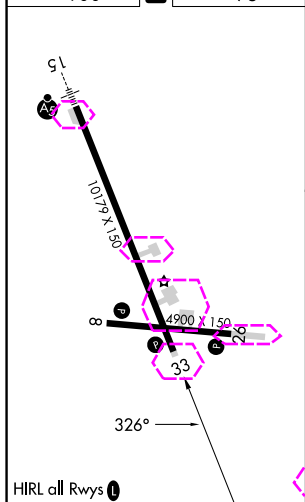
ASOS 135.75	ANCHORAGE CENTER 118.5 278.3	COLD BAY RADIO 123.6 (CTAF) 0
-----------------------	--	---



ALTERNATE
MISSED APCH FIX



ELEV 100	D	TDZE 93
----------	---	---------



CATEGORY	A	B	C	D
S-33		420-1½	327 (400-1½)	
CIRCLING	540-1½ 440 (500-1½)	560-1½ 460 (500-1½)	860-2½ 760 (800-2½)	

COLD BAY, ALASKA
Amdt 11 10SEP20

55°12'N-162°44'W

COLD BAY (CDB) (PACD)
LOC BC RWY 33

AK, 12 JUN 2025 to 07 AUG 2025

LOC I-CDB <u>110.3</u>	APP CRS 326°	Rwy Ldg 10179 TDZE 93 Apt Elev 100
----------------------------------	------------------------	---

LOC BC RWY 33
COLD BAY (CDB) (PACD)

DME required.

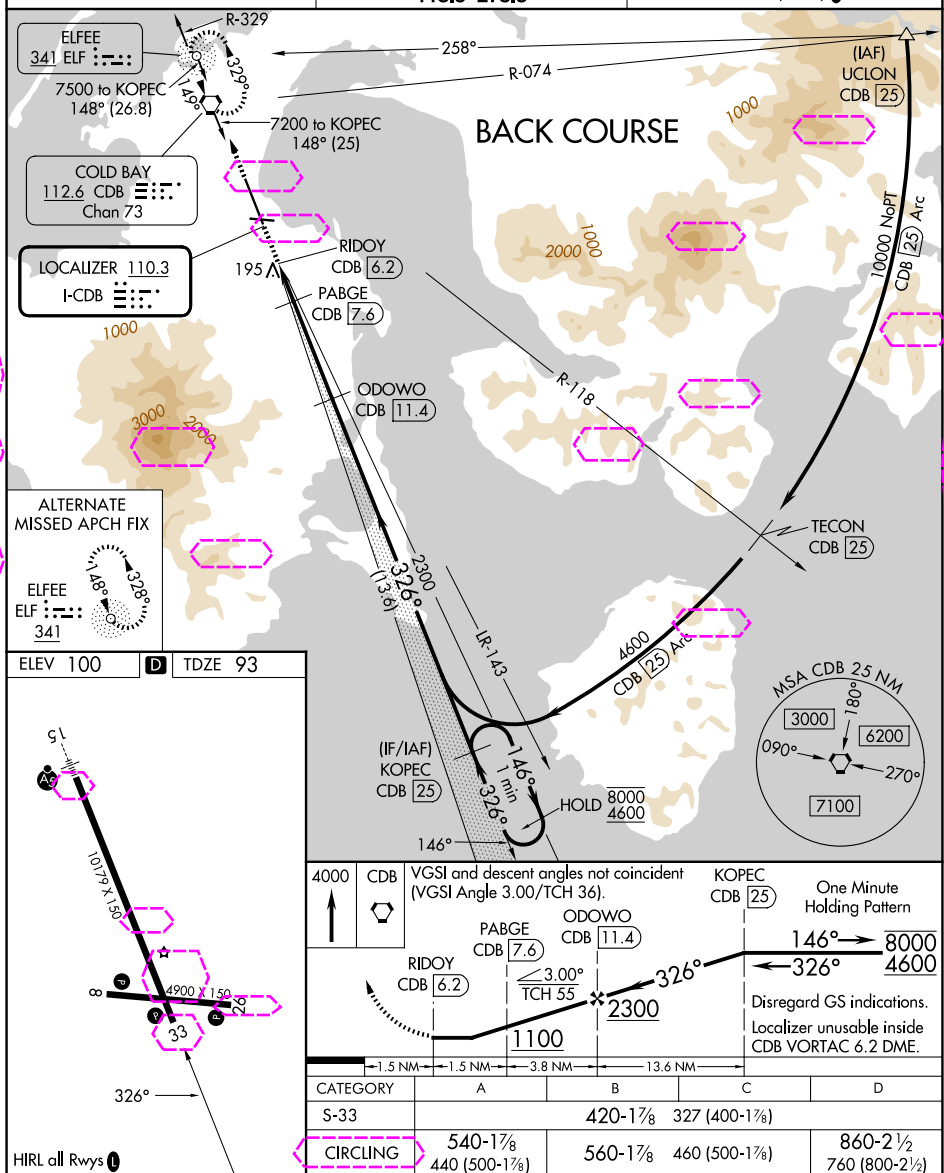
T Circling NA for Cat A southwest of Rwy 15-33 at night. DME from CDB VORTAC.
A Simultaneous reception of I-CDB and CDB DME required. Circling NA for Cats B/C/D southwest of Rwy 15-33.

MISSED APPROACH: Climb to 4000
direct CDB VORTAC and hold,
continue climb-in-hold to 4000.

ASOS
135.75

ANCHORAGE CENTER
118.5 278.3

COLD BAY RADIO
123.6 (CTAF) **L**



COLD BAY, ALASKA
Amdt 11 10SEP20

COLD BAY (CDB) (PACD)
LOC BC RWY 33

55°12'N-162°44'W