

LOC I-CDB <u>110.3</u>	APP CRS 146°	Rwy Idg 10179 TDZE 75 Apt Elev 100
----------------------------------	------------------------	---

ILS or LOC RWY 15
COLD BAY (CDB) (PACD)

DME required.

T Circling NA for Cats B/C/D southwest of Rwy 15-33. DME from CDB VORTAC.
A Simultaneous reception of I-CDB and CDB DME required. DME values will decrease then increase prior to reaching missed approach point. Circling NA for Cat A southwest of Rwy 15-33 at night. For inop ALS, increase S-LOC 15 Cats C and D visibility to RVR 5500.
 #RVR 1800 authorized with use of FD or AP or HUD to DA.

MALSR



MISSED APPROACH: Climb to 1100 then climbing left turn to 2700 direct CDB VORTAC and hold, continue climb-in-hold to 2700.

ASOS
135.75

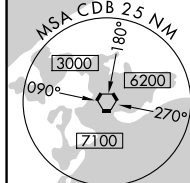
ANCHORAGE CENTER
118.5 278.3

COLD BAY RADIO
123.6 (CTAF)

ALTERNATE
MISSED APCH FIX



Procedure NA for arrival at
ELF NDB on G10 southeast
bound.



LOCALIZER 110.3

One Minute Holding Pattern 6000 ← 326° 2700 → 146°		DEADS CDB <u>10</u> 1800		JEGNO CDB <u>2.1</u> 1800 CDB VORTAC		1100 ↑ 2700 ↘ CDB	
GS 3.10° TCH 55		1800		1800 *760		COTRA CDB <u>1</u> *CDB <u>2</u> *LOC only. CDB <u>3</u>	
		7.9 NM		3.1 NM		1 NM	
CATEGORY	A		B		C		D
S-ILS 15 #			275/24		200 (200-½)		
S-LOC 15	440/24		365 (400-½)		440/35		365 (400-¾)
<div style="border: 2px solid red; padding: 2px;">C CIRCLING</div>	540-1		560-1		560-1½		860-2½
	440 (500-1)		460 (500-1)		460 (500-1½)		760 (800-2½)

COLD BAY, ALASKA
Amdt 19 10SEP20

55°12'N-162°44'W

COLD BAY (CDB) (PACD)
ILS or LOC RWY 15

HIRL all Rwys **L**

AK, 12 JUN 2025 to 07 AUG 2025

COLD BAY, ALASKA

AL-1241 (FAA)


25219

LOC I-CDB 110.3	APP CRS 146°	Rwy Ldg 10179 TDZE 75 Apt Elev 100
---------------------------	------------------------	---

ILS or LOC RWY 15
COLD BAY (CDB) (PACD)

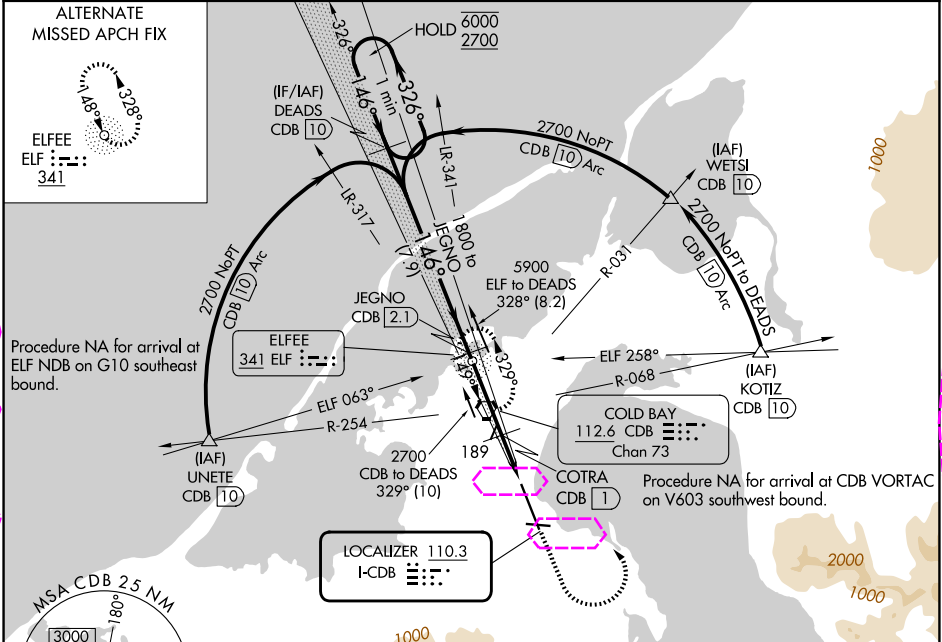
DME required.

⚠ Circling NA for Cats B/C/D southwest of Rwy 15-33. DME from CDB VORTAC.
⚠ Simultaneous reception of I-CDB and CDB DME required. DME values will decrease then increase prior to reaching missed approach point. Circling NA for Cat A southwest of Rwy 15-33 at night. For inop ALS, increase S-LOC 15 Cats C and D visibility to RVR 5500. #RVR 1800 authorized with use of FD or AP or HUD to DA.

MALSR


MISSED APPROACH: Climb to 1100 then climbing left turn to 2700 direct CDB VORTAC and hold, continue climb-in-hold to 2700.

ASOS 135.75	ANCHORAGE CENTER 118.5 278.3	COLD BAY RADIO 123.6 (CTAF) 0
-----------------------	--	---



One Minute Holding Pattern		DEADS CDB 10	JEGNO CDB 2.1	1100	2700	CDB
6000 ← 326°		2700 → 146°	1800	COTRA CDB 1	*CDB 2	*LOC only, CDB 3
GS 3.10° TCH 55		1800	760			
		7.9 NM	3.1 NM	1 NM	1 NM	
CATEGORY	A	B	C	D		
S-ILS 15 #	275/24		200 (200-½)			
S-LOC 15	440/24 365 (400-½)		440/35 365 (400-¾)			
CIRCLING	540-1 440 (500-1)		560-1 460 (500-1)		560-1½ 460 (500-1½)	860-2½ 760 (800-2½)

