

PORT HEIDEN, ALASKA

AL-1240 (FAA)

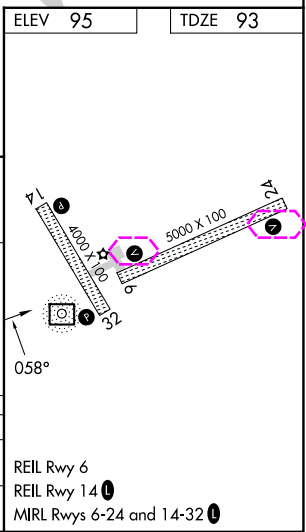
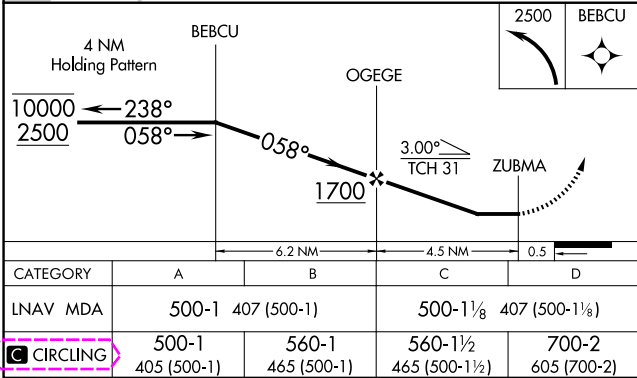
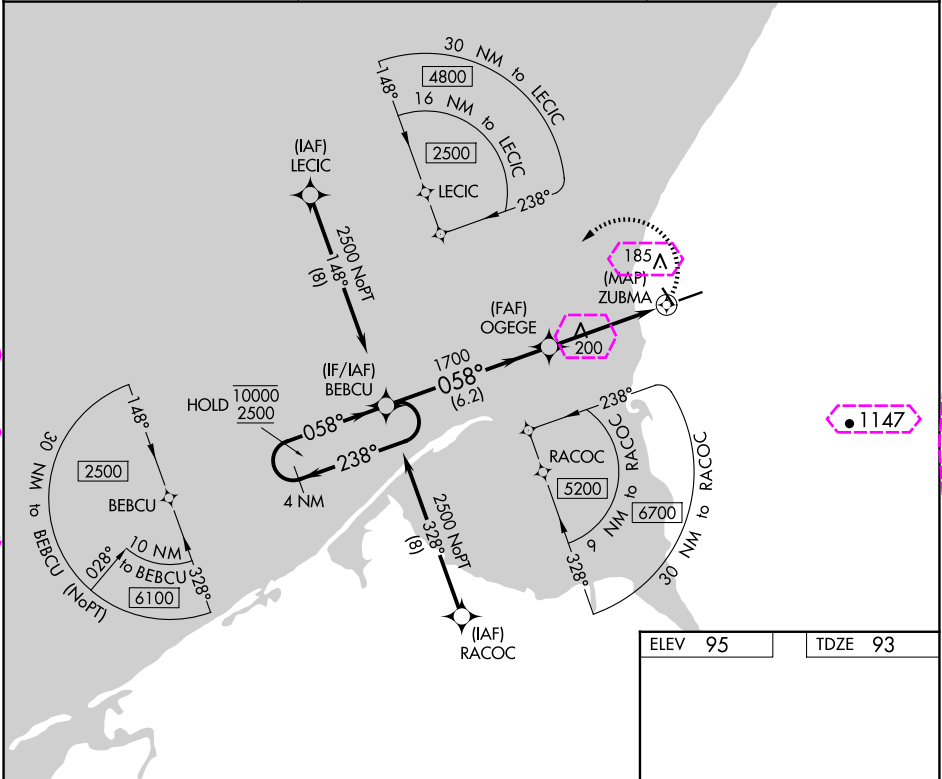
24249

RNAV (GPS) RWY 6
PORT HEIDEN (PTH)(PAPH)

APP CRS	Rwy Idg	5000
058°	TDZE	93
	Apt Elev	95

RNP APCH.	MISSED APPROACH: Climbing left turn to 2500 direct BEBCU and hold.
▼ ▲ Rwy 6 helicopter visibility reduction below 1 SM NA.	

AWOS-3P 135.4	ANCHORAGE CENTER 132.9 288.3	CTAF 122.8
------------------	---------------------------------	---------------



PORT HEIDEN, ALASKA	PORT HEIDEN (PTH)(PAPH)
Amdt 1 05DEC19	RNAV (GPS) RWY 6
56°58'N-158°38'W	

PORT HEIDEN, ALASKA

AL-1240 (FAA)

25219

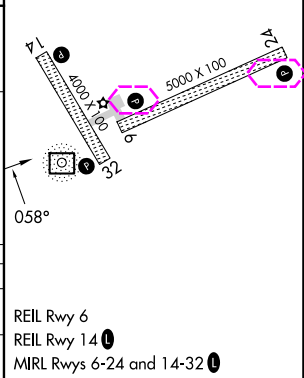
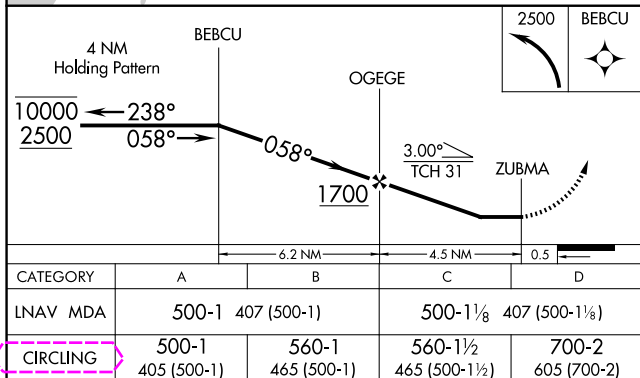
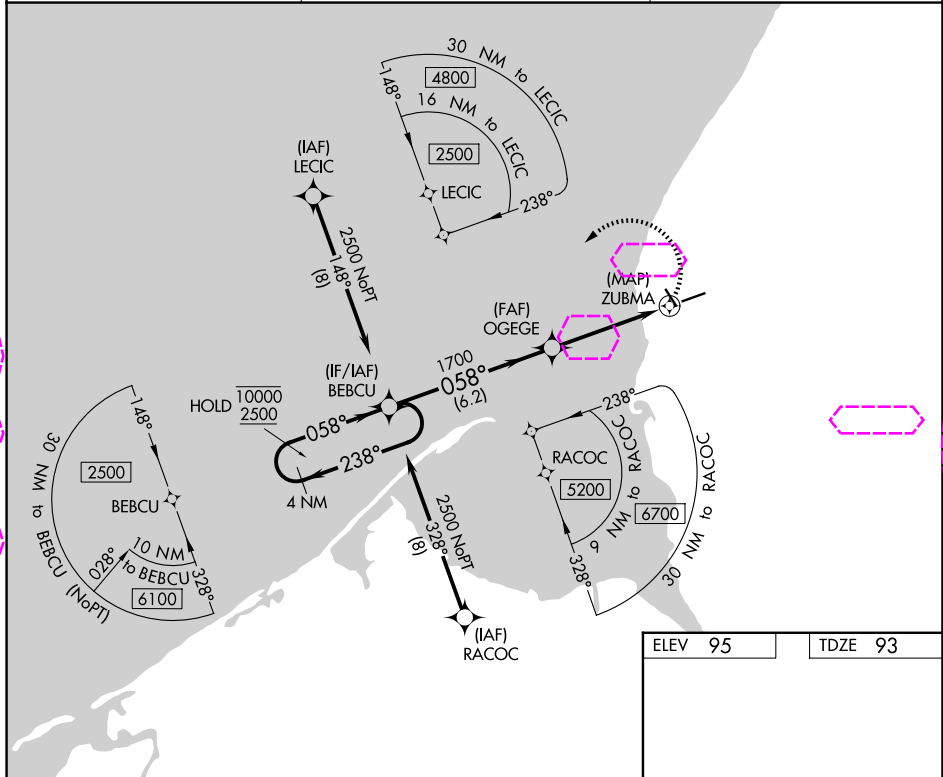
APP CRS	Rwy Ldg	5000
058°	TDZE	93
	Apt Elev	95

RNAV (GPS) RWY 6

PORT HEIDEN (PTH)(PAPH)

RNP APCH.	MISSED APPROACH: Climbing left turn to 2500 direct BEBCU and hold.
▼ ▲ Rwy 6 helicopter visibility reduction below 1 SM NA.	

AWOS-3P 135.4	ANCHORAGE CENTER 132.9 288.3	CTAF 122.8 0
------------------	---------------------------------	-----------------



CATEGORY	A	B	C	D
LNVA MDA	500-1	407 (500-1)	500-1 1/8	407 (500-1 1/8)
CIRCLING	500-1 405 (500-1)	560-1 465 (500-1)	560-1 1/2 465 (500-1 1/2)	700-2 605 (700-2)

PORT HEIDEN, ALASKA
Amdt 1 05DEC19

56°58'N-158°38'W

PORT HEIDEN (PTH)(PAPH)
RNAV (GPS) RWY 6

AK, 07 AUG 2025 to 02 OCT 2025

AK, 07 AUG 2025 to 02 OCT 2025