

PORT HEIDEN, ALASKA

AL-1240 (FAA)

24249

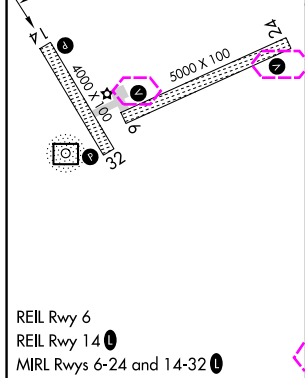
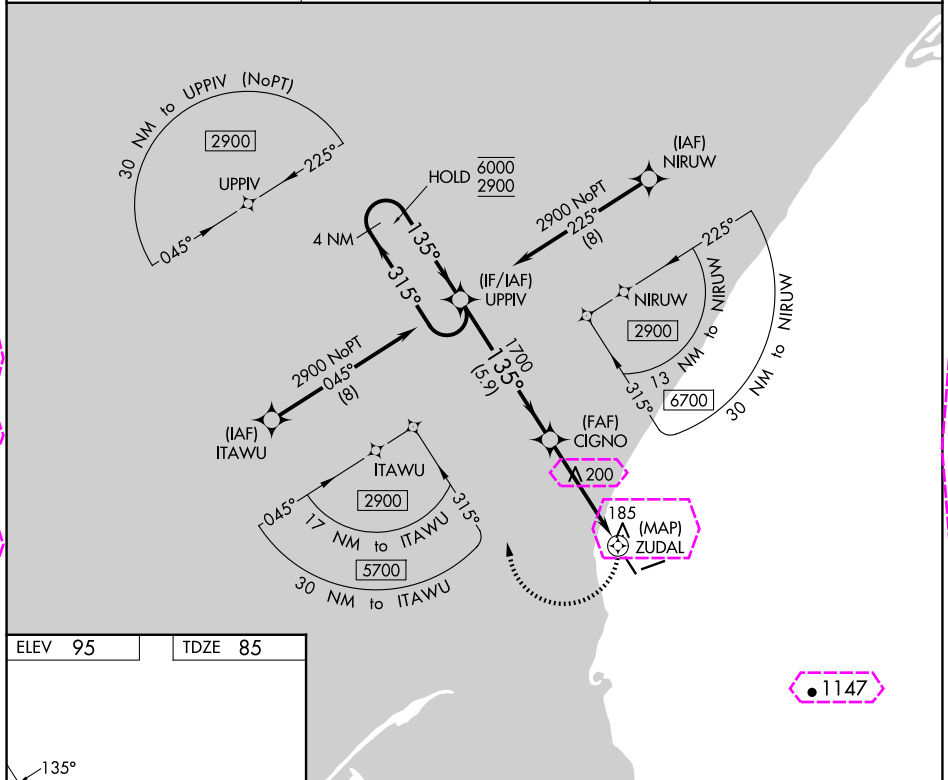
APP CRS 135°	Rwy Idg TDZE Apt Elev	4000 85 95
-----------------	-----------------------------	------------------

# RNAV (GPS) RWY 14

PORT HEIDEN (PTH)(PAPH)

RNP APCH.	MISSED APPROACH: Climbing right turn to 2900 direct UPPIV and hold, continue climb-in-hold to 2900.
▼ ▲ Rwy 14 helicopter visibility reduction below 1 SM NA.	

AWOS-3P 135.4	ANCHORAGE CENTER 132.9 288.3	CTAF 122.8 0
------------------	---------------------------------	-----------------



4 NM Holding Pattern		UPPIV	2900	UPPIV
6000 2900		315° 135°	1700	3.00° TCH 30
		5.9 NM	4.5 NM	0.5
CATEGORY	A	B	C	D
LNAV MDA	500-1	415 (500-1)	500-1 1/8	415 (500-1 1/8)
CIRCLING	500-1 405 (500-1)	560-1 465 (500-1)	560-1 1/2 465 (500-1 1/2)	700-2 605 (700-2)

PORT HEIDEN, ALASKA  
Amdt 1 05DEC19

56°58'N-158°38'W

# PORT HEIDEN (PTH)(PAPH)

## RNAV (GPS) RWY 14

AK, 12 JUN 2025 to 07 AUG 2025

AK, 12 JUN 2025 to 07 AUG 2025

PORT HEIDEN, ALASKA

AL-1240 (FAA)

25219

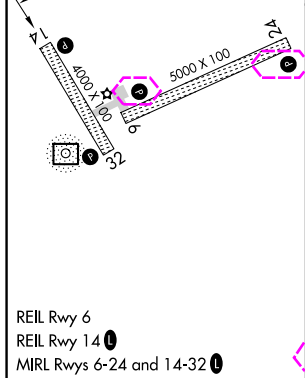
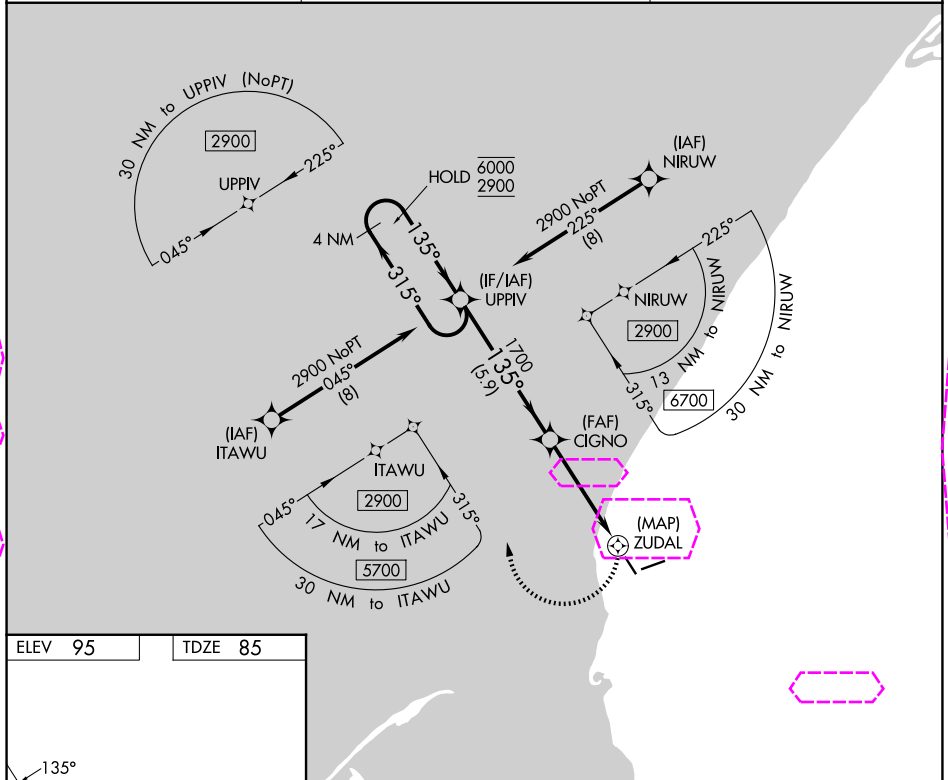
APP CRS 135°	Rwy Ldg TDZE Apt Elev	4000 85 95
-----------------	-----------------------------	------------------

# RNAV (GPS) RWY 14

PORT HEIDEN (PTH)(PAPH)

RNP APCH.	MISSED APPROACH: Climbing right turn to 2900 direct UPPIV and hold, continue climb-in-hold to 2900.
▼ ▲ Rwy 14 helicopter visibility reduction below 1 SM NA.	

AWOS-3P 135.4	ANCHORAGE CENTER 132.9 288.3	CTAF 122.8 0
------------------	---------------------------------	-----------------



4 NM Holding Pattern		UPPIV	2900	UPPIV
6000 2900		315° 135°	1700	3.00° TCH 30
		5.9 NM	4.5 NM	0.5
CATEGORY	A	B	C	D
LNAV MDA	500-1	415 (500-1)	500-1 1/8	415 (500-1 1/8)
CIRCLING	500-1 405 (500-1)	560-1 465 (500-1)	560-1 1/2 465 (500-1 1/2)	700-2 605 (700-2)

PORT HEIDEN, ALASKA  
Amdt 1 05DEC19

56°58'N-158°38'W

PORT HEIDEN (PTH)(PAPH)  
RNAV (GPS) RWY 14

AK, 07 AUG 2025 to 02 OCT 2025

AK, 07 AUG 2025 to 02 OCT 2025