

KODIAK, ALASKA

AL-1238 (FAA)

25107

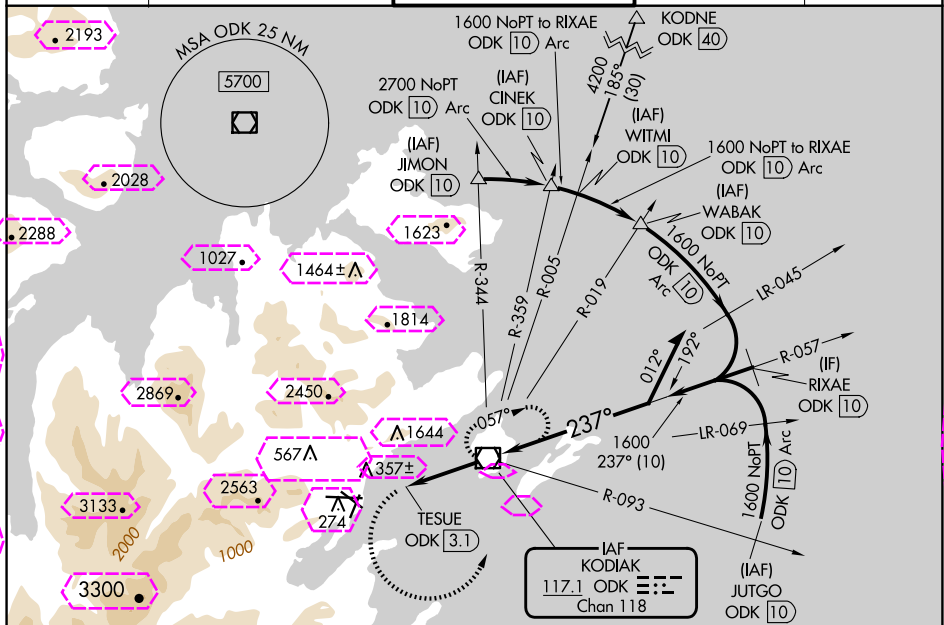
VOR/DME ODK	APP CRS	Rwy Idg	7534
117.1	237°	TDZE	32
Chan 118		Apt Elev	79

# VOR RWY 26

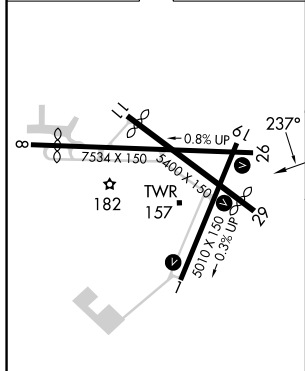
KODIAK (ADQ)(PADQ)

<p><b>⚠</b> Circling NA north of Rwy 8-26 and west of Rwy 1-19. <b>⚠</b> Circling Rwy 1 NA at night. Circling NA to Rwy 8, 11 and 19. Rapidly rising terrain north, west, and south of airport.</p>	<p>MISSED APPROACH: Climbing left turn to 3700 on heading 079° then left turn direct ODK VOR/DME and hold.</p>
---	--

ATIS <b>134.45</b>	ANCHORAGE CENTER <b>125.1 281.4</b>	KODIAK TOWER ★ <b>119.8 (CTAF) 239.0</b>	GND CON <b>121.9</b>	UNICOM <b>122.8</b>
-----------------------	--	---	-------------------------	------------------------



ELEV 79	TDZE 32
---------	---------



REIL Rwy 1 and 26	
HIRL Rwy 1-19, 8-26, and 11-29	
FAF to MAP 3.1 NM	
Knots	60 90 120 150 180
Min:Sec	3:06 2:04 1:33 1:14 1:02

<div>3700</div> <div>hdg 079°</div> <div></div> <td><div>ODK</div><div></div></td> <td colspan="3"><div>VGSI and descent angles not coincident (VGSI Angle 2.05/TCH 54)</div></td>	<div>ODK</div> <div></div>	<div>VGSI and descent angles not coincident (VGSI Angle 2.05/TCH 54)</div>		
		<div>ODK VOR/DME</div> <div>4000</div>	<div>Remain within 10 NM</div>	
		<div>057°</div>	<div>3600</div>	
		<div>237°</div>	<div>1600</div>	
<div>TESUE ODK 3.1</div> <div></div>		<div>ODK 2</div> <div></div>	<div>3.03° TCH 55</div>	
<div>1.6 NM</div>		<div>1.1 NM</div>	<div>2 NM</div>	
CATEGORY	A	B	C	D
S-26	660-2 628 (600-2)			
<div></div> CIRCLING	660-2 581 (600-2)	720-2 641 (700-2)	1140-3 1061 (1100-3)	NA

KODIAK, ALASKA  
Amdt 3A 20JUN19

57°45'N-152°30'W

KODIAK (ADQ)(PADQ)  
VOR RWY 26

AK, 12 JUN 2025 to 07 AUG 2025

AK, 12 JUN 2025 to 07 AUG 2025

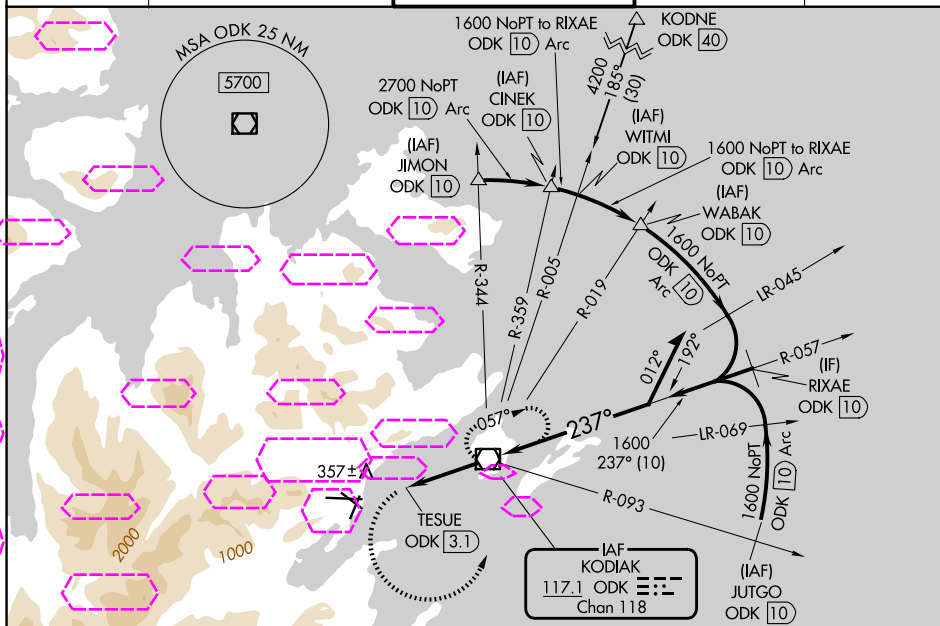
VOR/DME ODK <u>117.1</u> Chan <b>118</b>	APP CRS <b>237°</b>	Rwy Ldg <b>7534</b> TDZE <b>32</b> Apt Elev <b>79</b>
--	------------------------	---

VOR RWY 26  
KODIAK (ADQ)(PADQ)

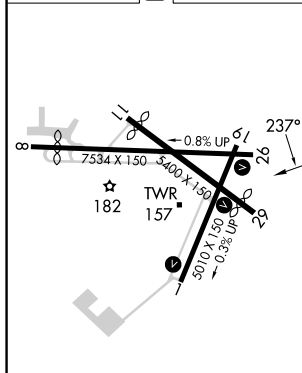
- T** Circling NA north of Rwy 8-26 and west of Rwy 1-19.  
**A** Circling Rwy 1 NA at night. Circling NA to Rwy 8, 11 and 19.  
 Rapidly rising terrain north, west, and south of airport.

**MISSED APPROACH:** Climbing left turn to 3700 on heading 079° then left turn direct ODK VOR/DME and hold.

ATIS <b>134.45</b>	ANCHORAGE CENTER <b>125.1 281.4</b>	KODIAK TOWER* <b>119.8 (CTAF) 0 239.0</b>	GND CON <b>121.9</b>	UNICOM <b>122.8</b>
-----------------------	--	--	-------------------------	------------------------



ELEV	79	<b>D</b>	TDZE	32
------	----	----------	------	----

REIL Rwy 1 and 26 **L**

HIRL Rwy 1-19, 8-26, and 11-29 **L**

FAF to MAP 3.1 NM

Knots	60	90	120	150	180
Min:Sec	3:06	2:04	1:33	1:14	1:02

KODIAK, ALASKA

Amdt 3A 20JUN19

57°45'N-152°30'W

KODIAK (ADQ)(PADQ)  
VOR RWY 26