

KODIAK, ALASKA

AL-1238 (FAA)

25107

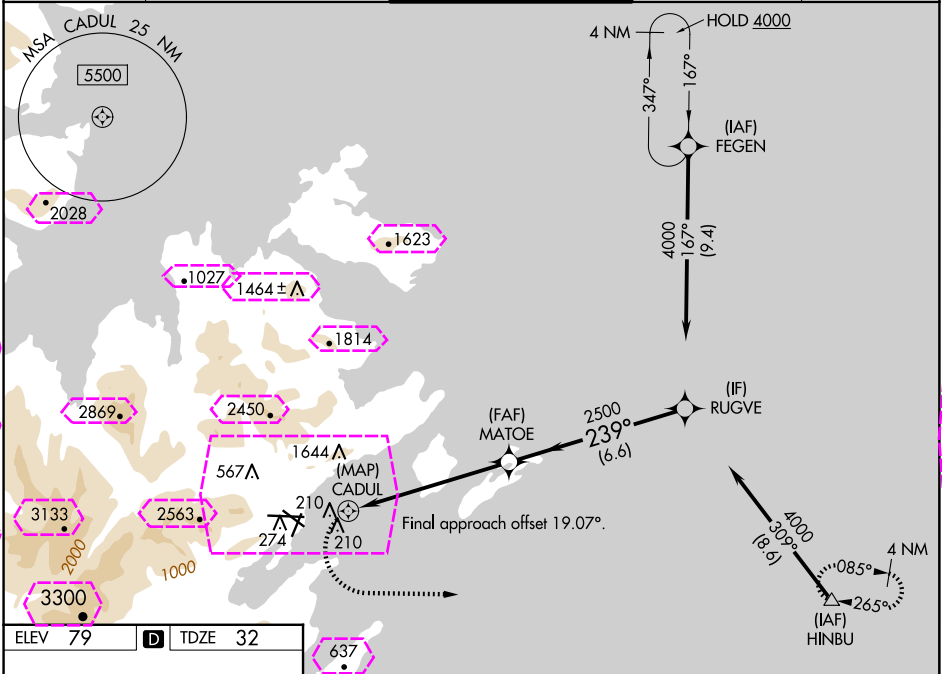
WAAS CH 93941 W26A	APP CRS 239°	Rwy Idg 7534 TDZE 32 Apt Elev 79
--	------------------------	---

RNAV (GPS) RWY 26

KODIAK (ADQ)(PADQ)

RNP APCH.	MISSED APPROACH: (Do not exceed 210K until HINBU) Climbing left turn to 4000 direct HINBU and hold, continue climb-in-hold to 4000. *Missed approach requires minimum climb of 357 feet per NM to 1500.
⚠ Circling NA north of Rwy 8-26 and west of Rwy 1-19. ⚠ Procedure NA at night. Circling to Rwy 8, 11 and 19 NA. Rapidly rising terrain north, west, and south of airport.	

ATIS 134.45	ANCHORAGE CENTER 125.1 281.4	KODIAK TOWER * 119.8 (CTAF) 239.0	GND CON 121.9	UNICOM 122.8
-----------------------	--	---	-------------------------	------------------------



ELEV 79	D	TDZE 32
----------------	----------	----------------

Diagram illustrating the approach path for Runway 26. The path starts at an altitude of 7534 ft (X 150) and descends to 3400 ft (X 150). The descent angle is 0.8% UP. The path then descends to 3010 ft (X 150) and continues to 150 ft (X 150). The descent angle is 0.3% UP. The final altitude is 26 ft. The path is labeled 239°.

Diagram illustrating the approach path for Runway 26, showing the HINBU and VGSIs. The path starts at an altitude of 4000 ft and descends to 2500 ft. The descent angle is 239°. The path is labeled 239°. The path is labeled 239°.

Diagram illustrating the approach path for Runway 26, showing the HINBU and VGSIs. The path starts at an altitude of 4000 ft and descends to 2500 ft. The descent angle is 239°. The path is labeled 239°. The path is labeled 239°.

CATEGORY	A	B	C	D
LP MDA	560-1 $\frac{7}{8}$	528 (500-1 $\frac{7}{8}$)		
LNAV MDA*	560-1 $\frac{7}{8}$	528 (500-1 $\frac{7}{8}$)		
LNAV MDA	940-1 $\frac{7}{8}$	908 (900-1 $\frac{7}{8}$)	940-2 $\frac{1}{2}$	908 (900-2 $\frac{1}{2}$)
C CIRCLING	940-1 $\frac{7}{8}$	861 (900-1 $\frac{7}{8}$)	1140-3 1060 (1100-3)	2020-3 1941 (2000-3)

REIL Rwy 1 and 26
HIRL Rwy 1-19, 8-26, and 11-29

KODIAK, ALASKA

AL-1238 (FAA)

25219

WAAS CH 93941 W26A	APP CRS 239°	Rwy Ldg 7534 TDZE 32 Apt Elev 79
--	------------------------	---

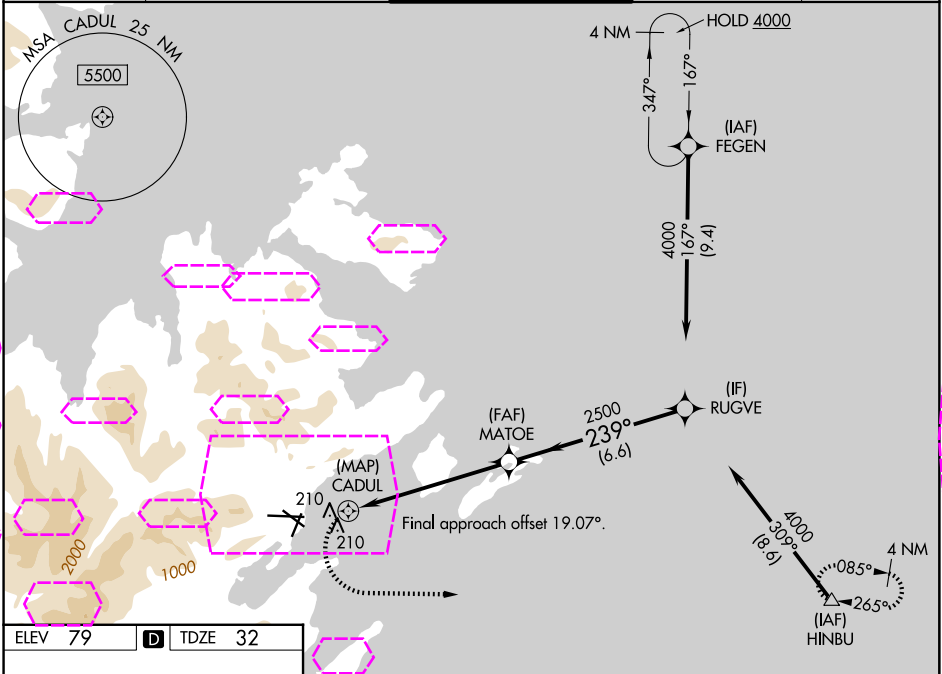
RNAV (GPS) RWY 26

KODIAK (ADQ)(PADQ)

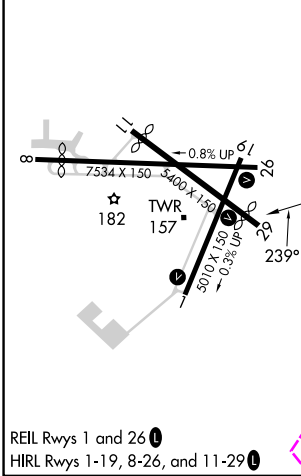
- RNP APCH - GPS.
- ⚠ Circling NA north of Rwy 8-26 and west of Rwy 1-19.
 - ⚠ Circling Rwy 1 NA at night. Circling to Rwy 8, 11 and 19 NA.
 - ⚠ Rapidly rising terrain north, west, and south of airport.

MISSED APPROACH: (Do not exceed 210K until HINBU)
Climbing left turn to 4000 direct HINBU and hold, continue climb-in-hold to 4000. *Missed approach requires minimum climb of 357 feet per NM to 1500.

ATIS 134.45	ANCHORAGE CENTER 125.1 281.4	KODIAK TOWER * 119.8 (CTAF) 239.0	GND CON 121.9	UNICOM 122.8
-----------------------	--	---	-------------------------	------------------------



ELEV 79	D	TDZE 32
---------	---	---------



KODIAK, ALASKA

Amdt 3B 07AUG25

57°45'N-152°30'W

KODIAK (ADQ)(PADQ)

RNAV (GPS) RWY 26