

KODIAK, ALASKA

AL-1238 (FAA)

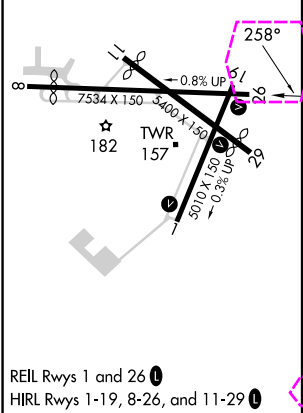
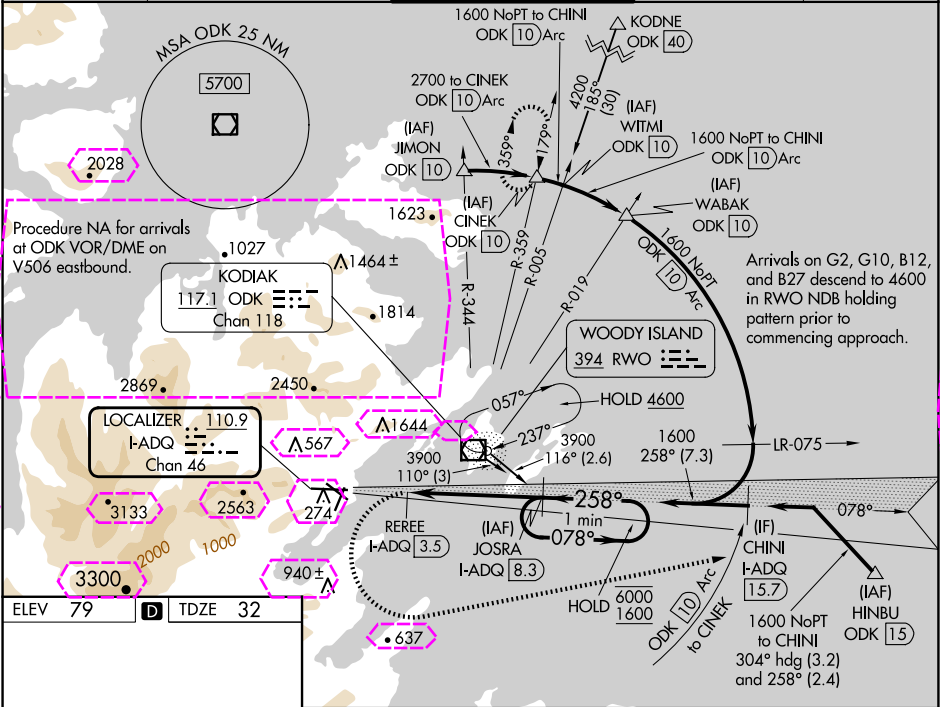
25107

LOC/DME I-ADQ 110.9 Chan 46	APP CRS 258°	Rwy Idg TDZE 32 Apt Elev 79	7534
-------------------------------------------------	------------------------	-------------------------------------------------	-------------

ILS Y or LOC Y RWY 26
KODIAK (ADQ)(PADQ)

DME required.	MISSED APPROACH: Climbing left turn to 5000 on heading 065° to intercept ODK VOR/DME 10 DME Arc. Arc north to CINEK/ODK 10 DME and hold
▼ Circling NA north of Rwy 8-26 and west of Rwy 1-19. Circling Rwy 1 NA at night. ▲ Circling NA to Rws 8, 11 and 19. Rapidly rising terrain north, west, and south of airport. ILS unusable from 2 DME inbound. When advised by ATC of tall ships in the harbor, procedure NA.	

ATIS 134.45	ANCHORAGE CENTER 125.1 281.4	KODIAK TOWER* 119.8 (CTAF) 239.0	GND CON 121.9	UNICOM 122.8
-----------------------	----------------------------------------	--------------------------------------------	-------------------------	------------------------



5000	north on ODK VOR/DME 10 Arc	CINEK	JOSRA I-ADQ 8.3	One Minute Holding Pattern
Use I-ADQ DME when on the localizer course.				
REER I-ADQ 3.5				
2.2	4.8 NM			
CATEGORY	A	B	C	D
S-ILS 26	636-3	604 (600-3)		824-3 792 (800-3)
S-LOC 26	640-2½	608 (600-2½)		1060-3 1028 (1000-3)
REIL Rws 1 and 26 HIRL Rws 1-19, 8-26, and 11-29	660-2½ 581 (600-2½)	720-2½ 641 (700-2½)	1140-3 1061 (1100-3)	NA

KODIAK, ALASKA
Amdt 4 27JAN22

57°45'N-152°30'W

KODIAK (ADQ)(PADQ)
ILS Y or LOC Y RWY 26

KODIAK, ALASKA

AL-1238 (FAA)

25219

LOC/DME I-ADQ 110.9 Chan 46	APP CRS 258°	Rwy Ldg TDZE 32 Apt Elev 79	7534
-------------------------------------------------	------------------------	-------------------------------------------------	-------------

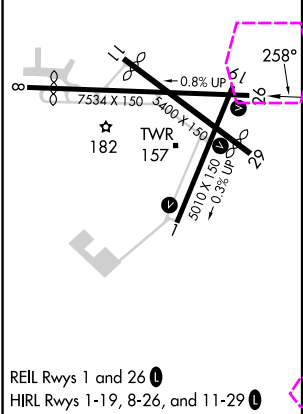
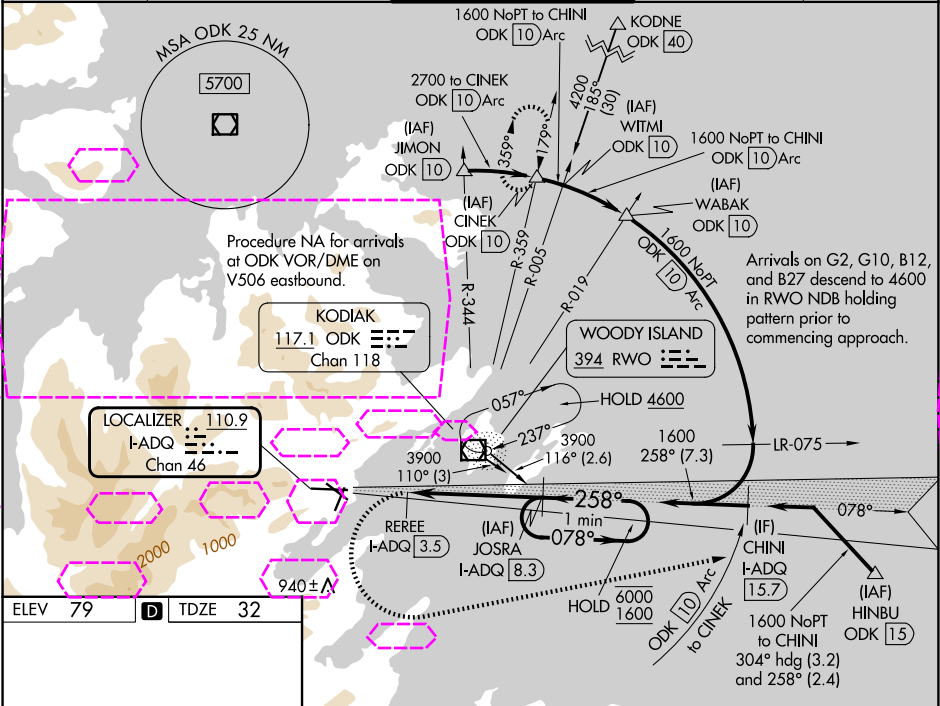
ILS Y or LOC Y RWY 26
KODIAK (ADQ)(PADQ)

DME required.

⚠ Circling NA north of Rwy 8-26 and west of Rwy 1-19. Circling Rwy 1 NA at night.
⚠ Circling NA to Rwys 8, 11 and 19. Rapidly rising terrain north, west, and south of airport. ILS unusable from 2 DME inbound. When advised by ATC of tall ships in the harbor, procedure NA.

MISSED APPROACH: Climbing left turn to 5000 on heading 065° to intercept ODK VOR/DME 10 DME Arc. Arc north to CINEK/ODK 10 DME and hold

ATIS 134.45	ANCHORAGE CENTER 125.1 281.4	KODIAK TOWER* 119.8 (CTAF) 239.0	GND CON 121.9	UNICOM 122.8
-----------------------	----------------------------------------	--------------------------------------------	-------------------------	------------------------



5000	north on ODK VOR/DME 10 Arc	CINEK	JOSRA I-ADQ 8.3	One Minute Holding Pattern
Use I-ADQ DME when on the localizer course.	RERE I-ADQ 3.5	1600	078°	6000
258°	258°	1600	258°	1600
2.2	4.8 NM			GS 2.05° TCH 54
CATEGORY	A	B	C	D
S-ILS 26	636-3	604 (600-3)		824-3 792 (800-3)
S-LOC 26	640-2½	608 (600-2½)		1060-3 1028 (1000-3)
CIRCLING	660-2½ 581 (600-2½)	720-2½ 641 (700-2½)	1140-3 1061 (1100-3)	NA

KODIAK, ALASKA
Amdt 4 27JAN22

57°45'N-152°30'W

KODIAK (ADQ)(PADQ)
ILS Y or LOC Y RWY 26