

KING SALMON, ALASKA

AL-1237 (FAA)

24305

VORTAC AKN 112.8 Chan 75	APP CRS 296°	Rwy Idg 8501 TDZE 73 Apt Elev 73
--	------------------------	---

VOR Y or TACAN Y RWY 30

KING SALMON (AKN)(PAKN)

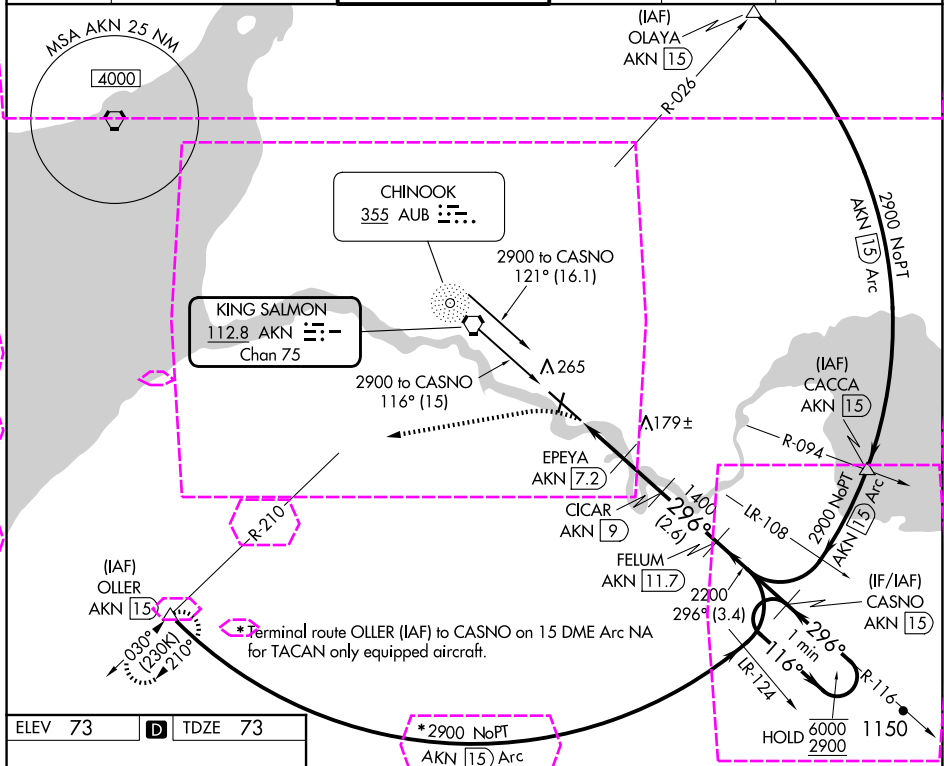
DME required.

T

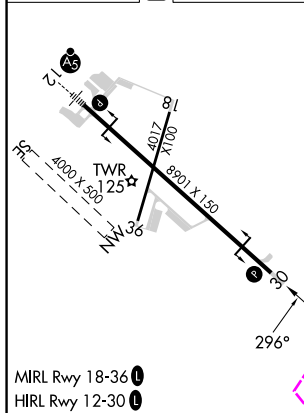
A

MISSED APPROACH: Climbing left turn to 3000 on heading 240° and on AKN VORTAC R-210 to OLLER/15 DME and hold.

ATIS 128.8	ANCHORAGE CENTER 124.8 354.0	KING SALMON TOWER* 118.3 279.5	GND CON 121.9	UNICOM 122.95	CTAF 121.9 352.05
----------------------	--	--	-------------------------	-------------------------	-----------------------------



ELEV 73	D	TDZE 73
---------	---	---------



3000 hdg 240° AKN R-210	OLLER AKN 15	CASNO AKN 15	FELUM AKN 11.7	CICAR AKN 9	EPEYA AKN 7.2	AKN 5.1	AKN 6.3	AKN 7.2	AKN 9	AKN 11.7	AKN 15	One Minute Holding Pattern
CATEGORY A B C D E												
S-30 480-1 407 (500-1) 480-1 1/8 407 (500-1 1/8)												
CIRCLING 580-1 507 (600-1) 580-1 1/2 900-2 3/4 960-3 507 (600-1 1/2) 827 (900-2 3/4) 887 (900-3)												

KING SALMON, ALASKA

58°41'N-156°39'W

KING SALMON (AKN)(PAKN)

VOR Y or TACAN Y RWY 30

Amdt 12A 15JUN23

AK, 12 JUN 2025 to 07 AUG 2025

AK, 12 JUN 2025 to 07 AUG 2025

VORTAC AKN <u>112.8</u> Chan 75	APP CRS 296°	Rwy Ldg 8501 TDZE 73 Apt Elev 73
---------------------------------------	-----------------	--

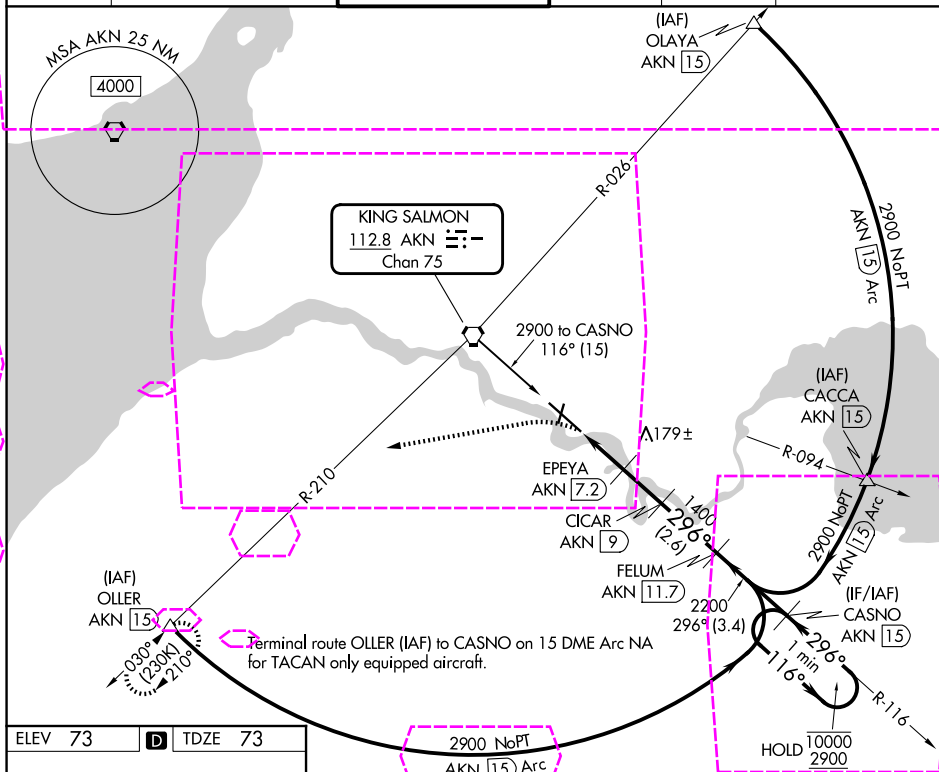
VOR Y or TACAN Y RWY 30
KING SALMON (AKN)(PAKN)

DME required.

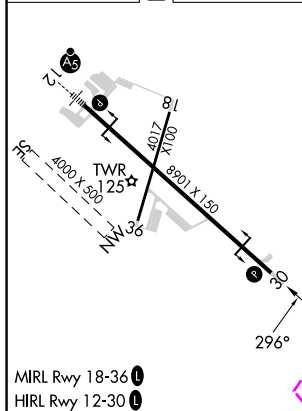
T When local altimeter setting not received, use WSN/PFWS altimeter setting and increase all MDAs 40 feet and S-30 visibility Cat C/D/E $\frac{1}{4}$ SM.

MISSED APPROACH: Climbing left turn to 3000 on heading 240° and on AKN VORTAC R-210 to OLLER/15 DME and hold.

ATIS 128.8	ANCHORAGE CENTER 124.8 354.0	KING SALMON TOWER★ 118.3 279.5	GND CON 121.9	UNICOM 122.95	CTAF 121.9 0 352.05
---------------	---------------------------------	-----------------------------------	------------------	------------------	------------------------



ELEV 73	D	TDZE 73
---------	----------	---------



<div>3000 hdg 240°</div>	<div>AKN R-210</div>	<div>OLLER △</div>	<div><div><div><div>FELUM AKN 11.7</div><div>CASNO AKN 15</div></div><div>One Minute Holding Pattern</div></div><div><div><div><div>CICAR AKN 9</div><div>EPEYA AKN 7.2</div></div><div><div>3.10° TCH 45</div><div>296°</div></div><div><div>116°</div><div>10000 2900</div></div></div><div><div>2200</div><div>1400</div><div>800</div></div><div><div>1.1 NM</div><div>0.9</div><div>1.8 NM</div><div>2.6 NM</div><div>3.4 NM</div></div></div></div>				
CATEGORY	A	B	C	D	E		
S-30	480-1 407 (500-1)	480-1½ 407 (500-1½)					
CIRCLING	580-1 507 (600-1)	580-1½ 507 (600-1½)	900-2¾ 827 (900-2¾)	960-3 887 (960-3)			