

KING SALMON, ALASKA

AL-1237 (FAA)

24305

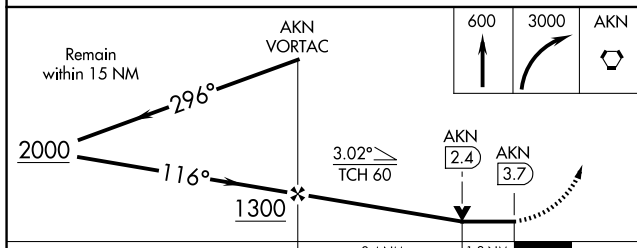
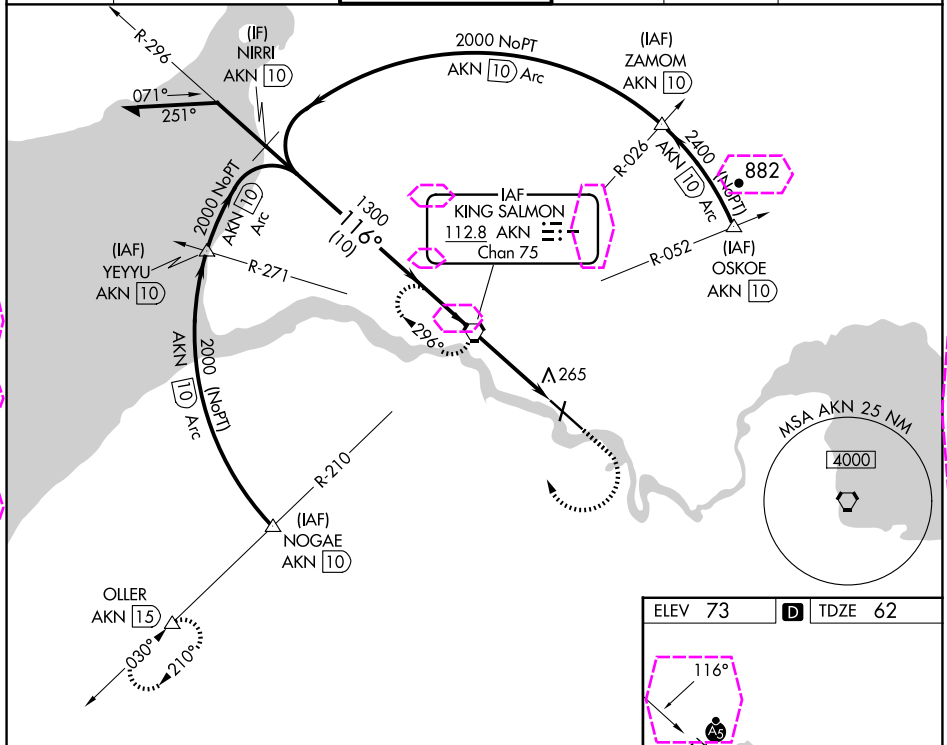
VORTAC AKN <b>112.8</b> Chan <b>75</b>	APP CRS <b>116°</b>	Rwy Idg TDZE <b>62</b> Apt Elev <b>73</b>
--	------------------------	---

# VOR Y or TACAN Y RWY 12

KING SALMON (AKN)(PAKN)

<p><b>⚠</b> For inop ALS, increase S-12 Cat E visibility to 1½ SM. When control tower closed, increase S-12 all Cats visibility to RVR 5000. When control tower closed, inop table doesn't apply to Cats A/B. When control tower closed and ALS inop, increase S-12 Cats C/D/E visibility to 1½ SM.</p>	<p><b>MALSR</b></p> <p><b>AS</b></p>	<p><b>MISSED APPROACH:</b> Climb to 600 then climbing right turn to 3000 direct AKN VORTAC and hold, continue climb-in-hold to 3000. (TACAN AIRCRAFT: Climbing right turn to 3000 on heading 238° and on AKN VORTAC R-210 to OLLER/ 15 DME and hold SW, right turn, 030° inbound.)</p>
---	--------------------------------------	--

ATIS <b>128.8</b>	ANCHORAGE CENTER <b>124.8 354.0</b>	KING SALMON TOWER* <b>118.3 279.5</b>	GND CON <b>121.9</b>	UNICOM <b>122.95</b>	CTAF <b>121.9 352.05</b>
----------------------	--	--	-------------------------	-------------------------	-----------------------------



CATEGORY	A	B	C	D	E
S-12	520/24	458 (500-½)	520/45	458 (500-¾)	
<b>CIRCLING</b>	580-1	507 (600-1)	580-1½ 507 (600-1½)	900-2¾ 827 (900-2¾)	960-3 887 (900-3)

Diagram illustrating the flight paths and altitudes for King Salmon VORTAC and AKN VORTAC. The diagram shows two intersecting paths: one labeled '4000 X 300' and 'NW 36°', and another labeled '4017 X 100' and '81°'. A third path is labeled '4801 X 150' and '30°'. A star symbol indicates the 'TWR 125' (Tower). The diagram also shows a 'MIRL Rwy 18-36' and 'MIRL Rwy 12-30'.

MIRL Rwy 18-36 **Ⓛ**

MIRL Rwy 12-30 **Ⓛ**

FAF to MAP 3.7 NM

Knots	60	90	120	150	180
Min:Sec	3:42	2:28	1:51	1:29	1:14

KING SALMON, ALASKA  
Amdt 14 25FEB21

58°41'N-156°39'W

KING SALMON (AKN)(PAKN)

# VOR Y or TACAN Y RWY 12

AK, 12 JUN 2025 to 07 AUG 2025

AK, 12 JUN 2025 to 07 AUG 2025

KING SALMON, ALASKA

AL-1237 (FAA)

25219

VORTAC AKN	APP CRS	Rwy Ldg	8501
112.8	116°	TDZE	62
Chan 75		Apt Elev	73

# VOR Y or TACAN Y RWY 12

KING SALMON (AKN)(PAKN)

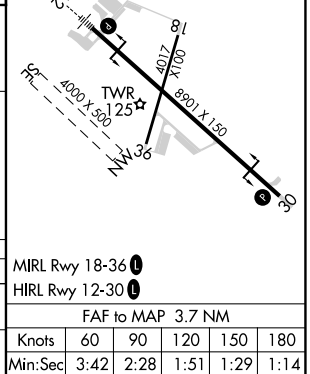
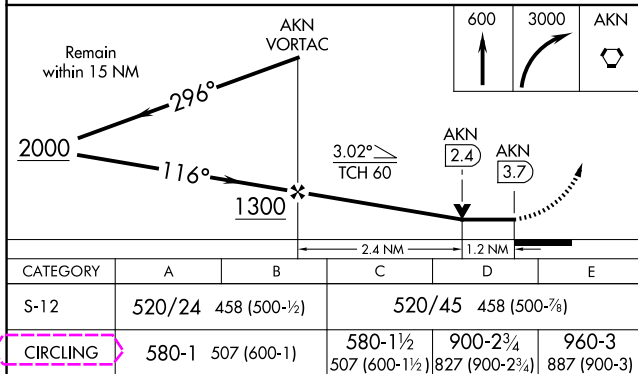
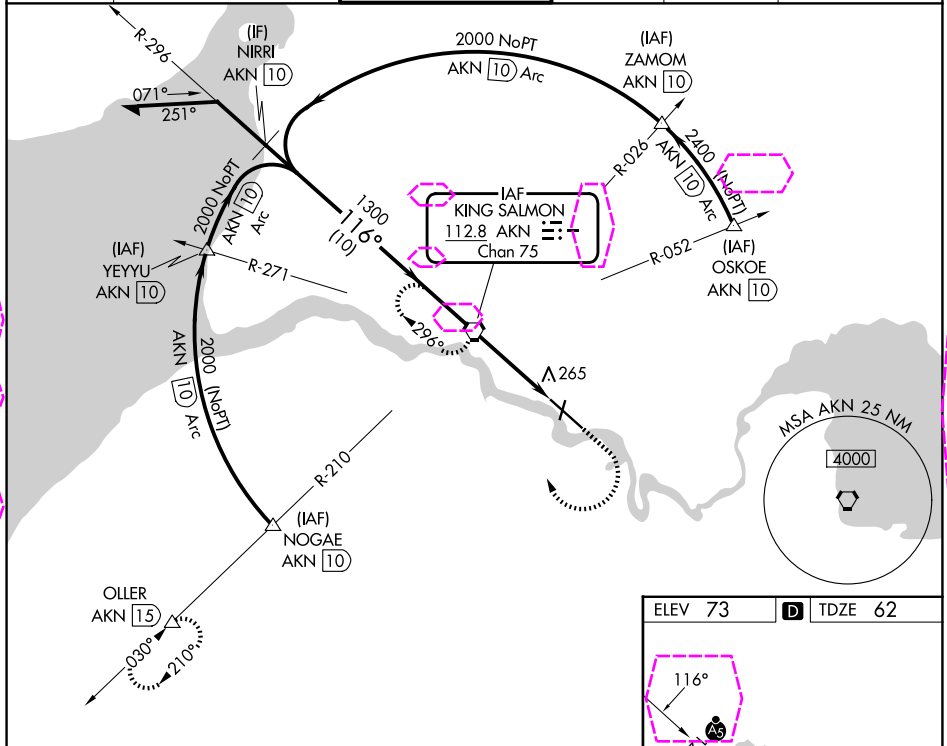
**⚠** For inop ALS, increase S-12 Cat E visibility to 1 3/8 SM. When control tower closed, increase S-12 all Cats visibility to RVR 5000. When control tower closed, inop table doesn't apply to Cats A/B. When control tower closed and ALS inop, increase S-12 Cats C/D/E visibility to 1 3/8 SM.

**MALSR**

**AS**

**MISSED APPROACH:** Climb to 600 then climbing right turn to 3000 direct AKN VORTAC and hold, continue climb-in-hold to 3000. (TACAN AIRCRAFT: Climbing right turn to 3000 on heading 238° and on AKN VORTAC R-210 to OLLER/ 15 DME and hold SW, right turn, 030° inbound.)

ATIS 128.8	ANCHORAGE CENTER 124.8 354.0	KING SALMON TOWER* 118.3 279.5	GND CON 121.9	UNICOM 122.95	CTAF 121.9 352.05
---------------	---------------------------------	-----------------------------------	------------------	------------------	----------------------



CATEGORY	A	B	C	D	E
S-12	520/24 458 (500-1/2)	520/45 458 (500-7/8)	580-1 1/2 507 (600-1)	900-2 3/4 827 (900-2 3/4)	960-3 887 (900-3)
CIRCLING	580-1 507 (600-1)	580-1 1/2 507 (600-1)	900-2 3/4 827 (900-2 3/4)	960-3 887 (900-3)	

KING SALMON, ALASKA  
Amdt 14 25FEB21

58°41'N-156°39'W

KING SALMON (AKN)(PAKN)  
VOR Y or TACAN Y RWY 12