

KING SALMON, ALASKA

AL-1237 (FAA)

24305

WAAS CH 77908 W30A	APP CRS 301°	Rwy Idg 8501 TDZE 73 Apt Elev 73
--	------------------------	---

RNAV (GPS) RWY 30

KING SALMON (AKN)(PAKN)

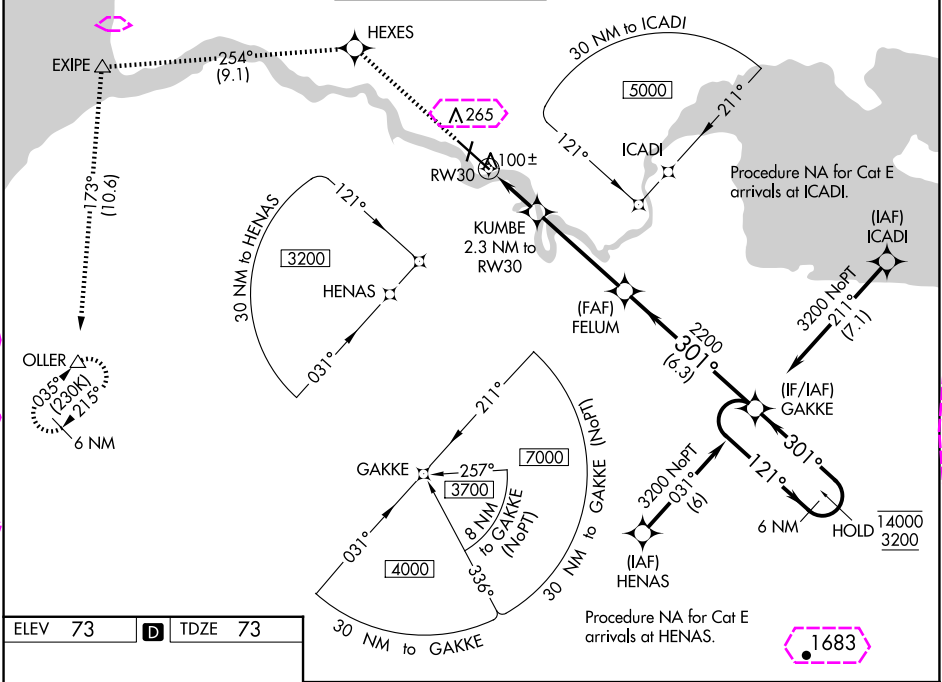
RNP APCH-GPS.

⚠

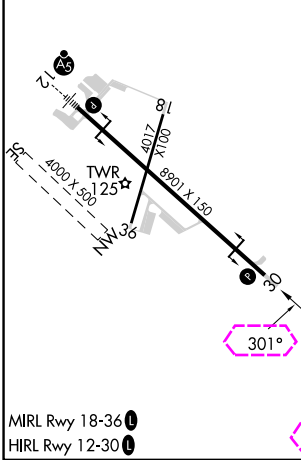
For uncompensated Baro-VNAV systems, LNAV/VNAV NA below -19°C or above 54°C. When control tower closed, increase LPV and LNAV/VNAV visibility all Cats to 1 SM.

MISSED APPROACH: Climb to 3000 direct HEXES and on track 254° to EXIPE and on track 173° to OLLER and hold.

ATIS 128.8	ANCHORAGE CENTER 124.8 354.0	KING SALMON TOWER* 118.3 279.5	GND CON 121.9	UNICOM 122.95	CTAF 121.9 352.05
----------------------	--	--	-------------------------	-------------------------	-----------------------------



ELEV 73	D	TDZE 73
---------	---	---------



3000	HEXES	EXIPE	OLLER		
↑	tr 254°	tr 173°			
*LNAV only		KUMBE 2.3 NM to RW30	FEFELUM 2200	GAKKE 6 NM Holding Pattern	
*0.8 NM to RW30				121° → 14000 ← 301° 3200	
RW30				GP 3.00° TCH 45	
0.8 NM		1.5 NM	4.2 NM	6.3 NM	
CATEGORY	A	B	C	D	E
LPV DA	273-¾ 200 (200-¾)				
LNAV/VNAV DA	323-¾ 250 (300-¾)				376-⅞ 303 (400-⅞)
LNAV MDA	360-1 287 (300-1)				
CIRCLING	580-1	507 (600-1)	580-1½ 507 (600-1½)	900-2¾ 827 (900-2¾)	960-3 887 (900-3)

KING SALMON, ALASKA
Amdt 2A 22APR21

58°41'N-156°39'W

RNAV (GPS) RWY 30

KING SALMON (AKN)(PAKN)

KING SALMON, ALASKA

AL-1237 (FAA)

25219

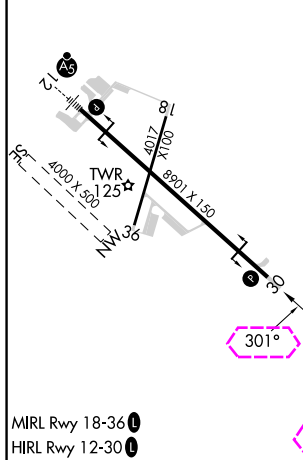
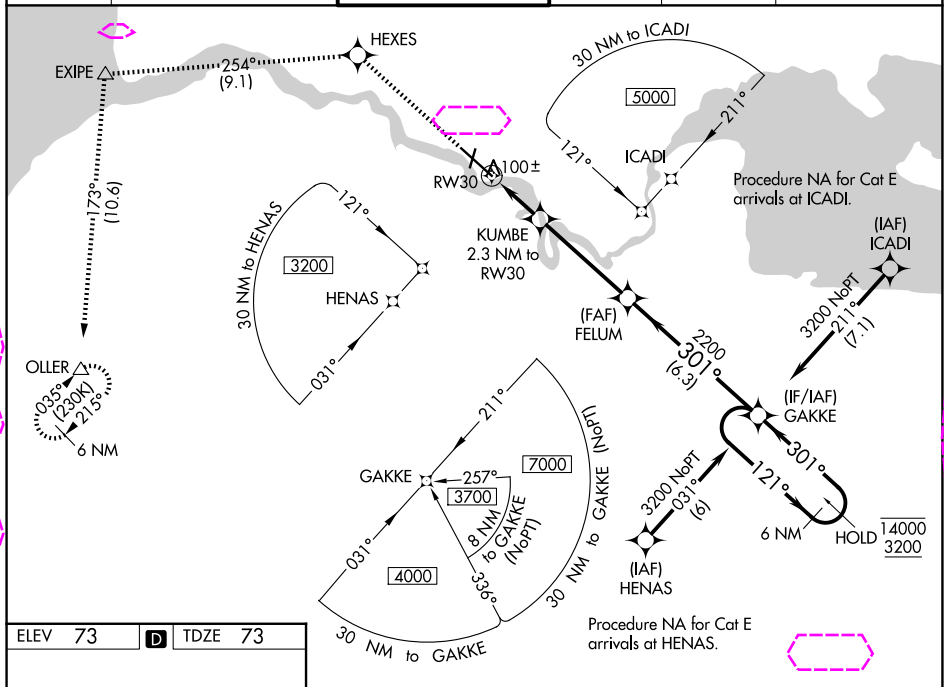
WAAS CH 77908 W30A	APP CRS 301°	Rwy Ldg 8501 TDZE 73 Apt Elev 73
--	------------------------	---

RNAV (GPS) RWY 30

KING SALMON (AKN)(PAKN)

RNP APCH-GPS. For uncompensated Baro-VNAV systems, LNAV/VNAV NA below -19°C or above 54°C. When control tower closed, increase LPV and LNAV/VNAV visibility all Cats to 1 SM.		MISSED APPROACH: Climb to 3000 direct HEXES and on track 254° to EXIPE and on track 173° to OLLER and hold.
--	--	---

ATIS 128.8	ANCHORAGE CENTER 124.8 354.0	KING SALMON TOWER* 118.3 279.5	GND CON 121.9	UNICOM 122.95	CTAF 121.9 352.05
----------------------	--	--	-------------------------	-------------------------	-----------------------------



3000	HEXES	EXIPE	OLLER	GAKKE	6 NM Holding Pattern
↑	tr 254°	△	tr 173°	△	
*LNAV only					
KUMBE 2.3 NM to RW30					
FELUM 2200					
RW30 860*					
0.8 NM 1.5 NM 4.2 NM 6.3 NM					
CATEGORY	A	B	C	D	E
LPV DA	273-¾ 200 (200-¾)				
LNAV/VNAV DA	323-¾ 250 (300-¾)				376-⅞ 303 (400-⅞)
LNAV MDA	360-1 287 (300-1)				
CIRCLING	580-1	507 (600-1)	580-1½ 507 (600-1½)	900-2¾ 827 (900-2¾)	960-3 887 (900-3)

KING SALMON, ALASKA
Amdt 2A 22APR21

58°41'N-156°39'W

RNAV (GPS) RWY 30

AK, 07 AUG 2025 to 02 OCT 2025

AK, 07 AUG 2025 to 02 OCT 2025