

WAAS CH 72608 W12A	APP CRS 121°	Rwy Idg 8501 TDZE 62 Apt Elev 73
--	------------------------	---

RNAV (GPS) RWY 12

RNP APCH-GPS.

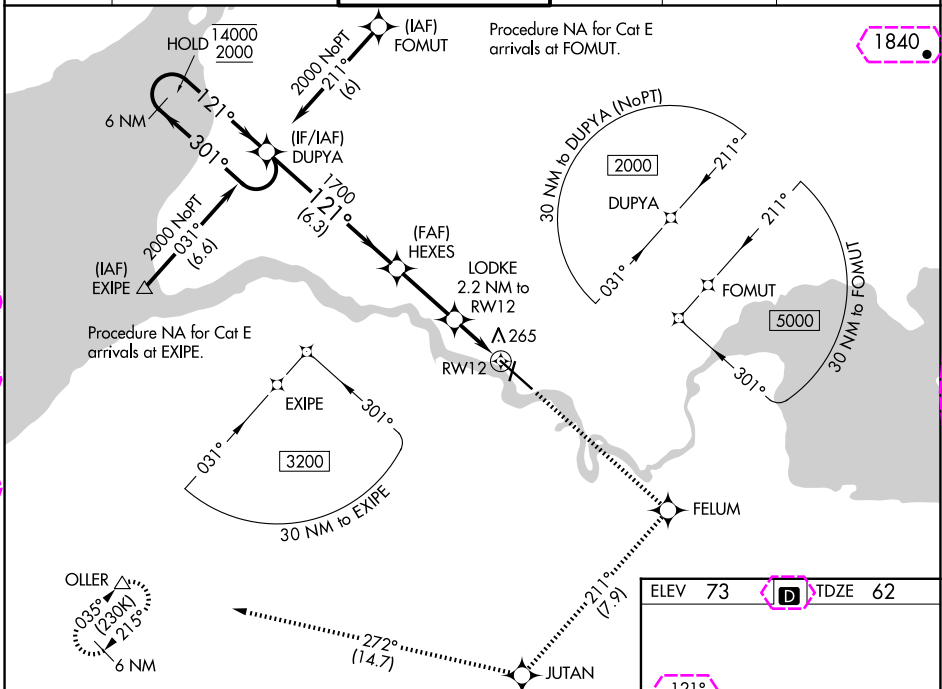
V For uncompensated Baro-VNAV systems, procedure NA below -18°C or above 54°C.
A For inop ALS, increase LPV Cat E visibility to RVR 4000, increase LNAV/VNAV all Cts visibility to RVR 5000 and increase LNAV Cat E visibility to 1% SM. When control tower closed, LPV, LNAV/VNAV and LNAV visibility RVR 5000. When control tower closed, inop table does not apply to LPV, LNAV/VNAV and LNAV Cts A/B.
 # RVR 1800 authorized with use of FD or AP or HUD to DA (NA when control tower closed).

MALS R

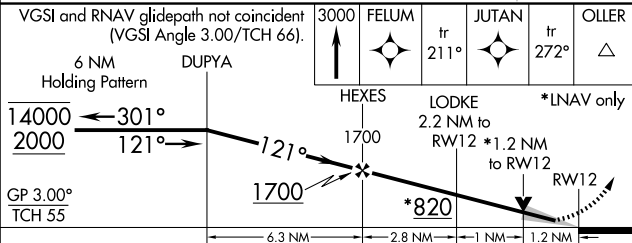


MISSED APPROACH:
Climb to 3000 direct
FELUM and on track
211° to JUTAN and
on track 272° to
OLLER and hold.

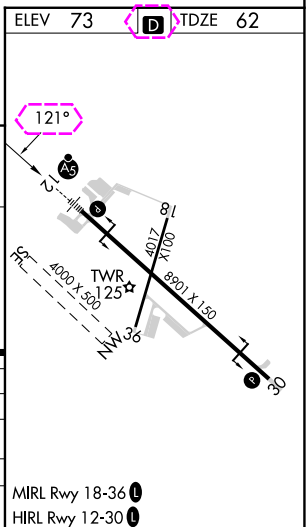
ATIS 128.8	ANCHORAGE CENTER 124.8 354.0	KING SALMON TOWER* 118.3 279.5	GND CON 121.9	UNICOM 122.95	CTAF 121.9 352.05
---------------	---------------------------------	-----------------------------------	------------------	------------------	----------------------



VGSI and RNAV glidepath not coincident
(VGSI Angle 3.00/TCH 66).



CATEGORY		A	B	C	D	E
LPV	DA#	262/24		200 (200-½)		
INAV/ VNAV	DA	426/35		364 (400-¾)		
INAV	MDA	520/24	458 (500-½)	520/45		458 (500-¾)
C CIRCLING		580-1	507 (600-1)	580-1½ 507 (600-1½)	900-2¾ 827 (900-2¾)	960-3 887 (900-3)



KING SALMON, ALASKA
Amdt 2A 22APR21

58°41'N-156°39'W

KING SALMON (AKN)(PAKN)
RNAV (GPS) RWY 12

AK, 12 JUN 2025 to 07 AUG 2025

AK, 12 JUN 2025 to 07 AUG 2025

WAAS CH 72608 W12A	APP CRS 121°	Rwy Ldg 8501 TDZE 62 Apt Elev 73
--	------------------------	---

RNAV (GPS) RWY 12

RNP APCH-GPS.

V For uncompensated Baro-VNAV systems, procedure NA below -18°C or above 54°C.
A For inop ALS, increase LPV C/D visibility to RVR 4000, increase LNAV/VNAV all C/Ds visibility to RVR 5000 and increase LNAV C/D visibility to 1 1/2 SM. When control tower closed, LPV, LNAV/VNAV and LNAV visibility RVR 5000. When control tower closed, inop table does not apply to LPV, LNAV/VNAV and LNAV C/Ds A/B.
 # RVR 1800 authorized with use of FD or AP or HUD to DA (NA when control tower closed).

MALSR



MISSED APPROACH:
Climb to 3000 direct
FELUM and on track
211° to JUTAN and
on track 272° to
OLLER and hold.

ATIS
128.8

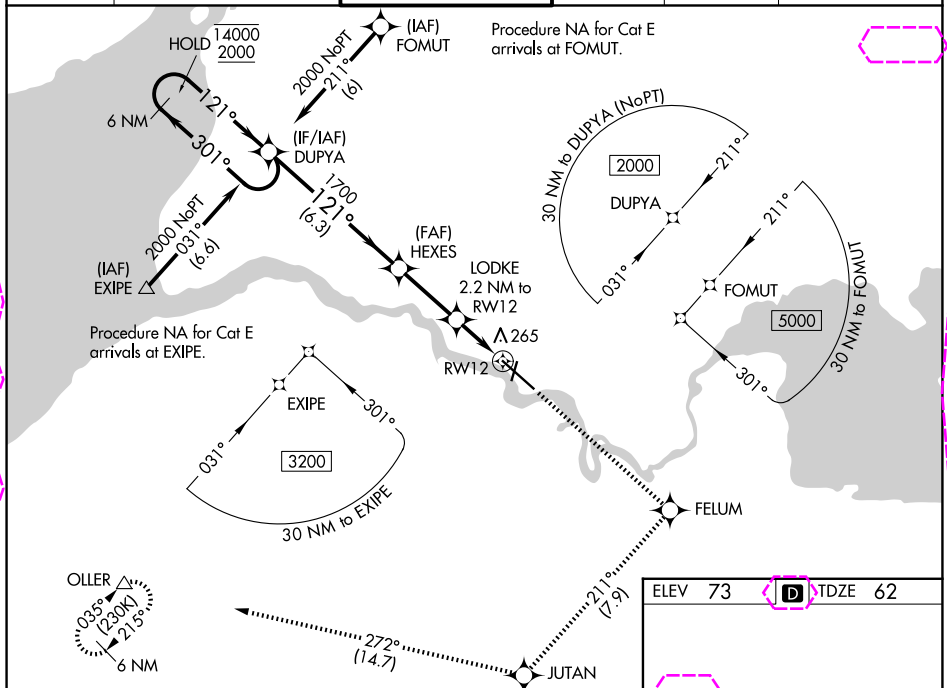
ANCHORAGE CENTER
124.8 354.0

KING SALMON TOWER★
118.3 279.5

GND CON
121.9

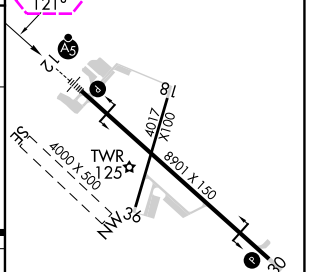
UNICOM
122.95

CTAF
121.90 352.05



VGSI and RNAV glidepath not coincident
(VGSI Angle 3.00/TCH 66).

GP 3.00°
TCH 55



CATEGORY		A	B	C	D	E
LPV	DA#	262/24		200 (200-½)		
INAV/ VNAV	DA	426/35		364 (400-¾)		
INAV	MDA	520/24	458 (500-½)	520/45		458 (500-¾)
CIRCLING		580-1	507 (600-1)	580-1½ 507 (600-1½)	900-2¾ 827 (900-2¾)	960-3 887 (900-3)

MIRL Rwy 18-36 L

HIRL Rwy 12-30 **L**

KING SALMON, ALASKA

Amdt 2A 22APR21

58°41'N-156°39'W

KING SALMON (AKN)(PAKN)

RNAV (GPS) RWY 12