

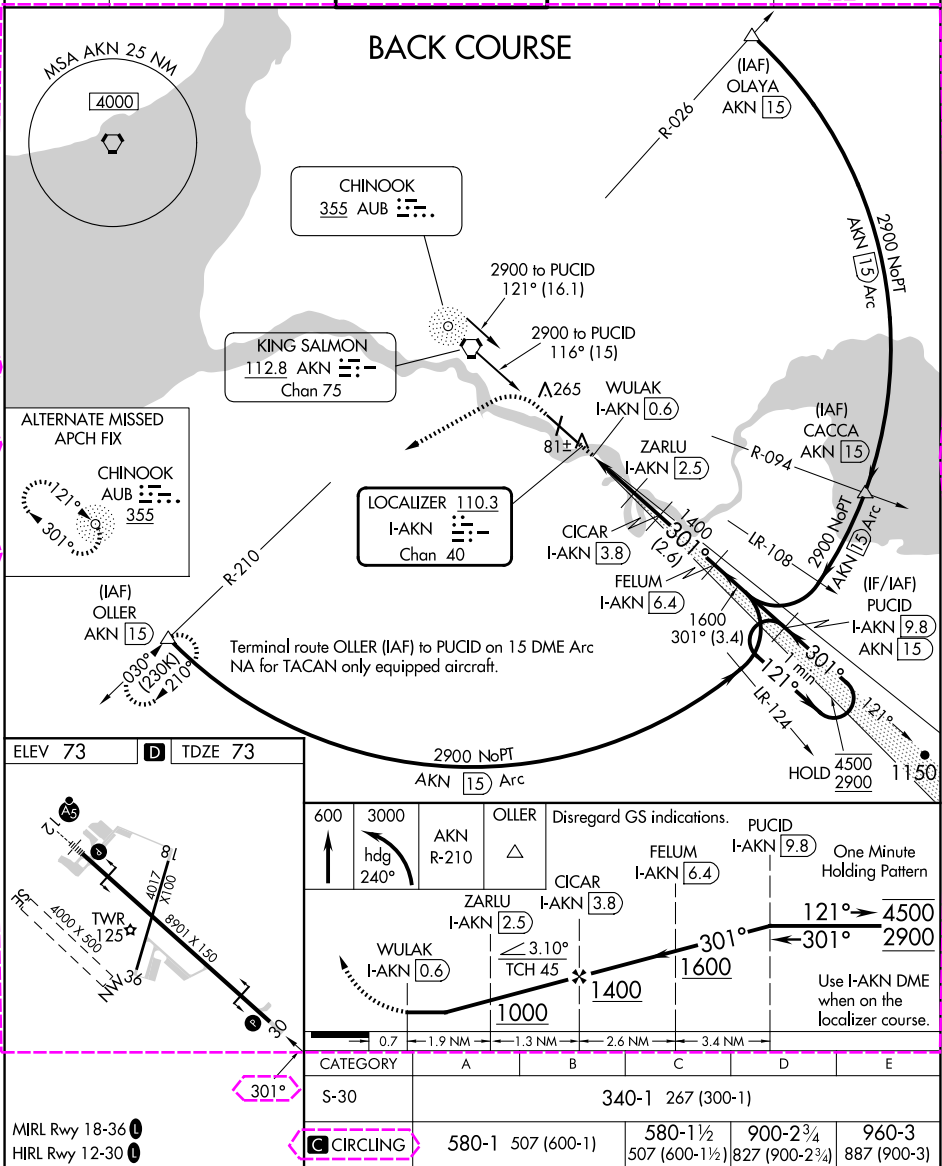
LOC/DME I-AKN	APP CRS	Rwy Idg	8501
<u>110.3</u>	301°	TDZE	73
Chan 40		Apt Elev	73

LOC BC RWY 30
KING SALMON (AKN)(PAKN)

DME required.

MISSED APPROACH: Climb to 600 then climbing left turn to 3000 on heading 240° and AKN VORTAC R-210 to OLLER/15 DME and hold.

ATIS 128.8	ANCHORAGE CENTER 124.8 354.0	KING SALMON TOWER* 118.3 279.5	GND CON 121.9	UNICOM 122.95	CTAF 121.90 352.05
---------------	---------------------------------	-----------------------------------	------------------	------------------	-----------------------



KING SALMON, ALASKA
Amdt 6 25FEB21

KING SALMON (AKN)(PAKN)
LOC BC RWY 30

58°41'N-156°39'W

KING SALMON, ALASKA

AL-1237 (FAA)

25219

LOC/DME I-AKN	APP CRS	Rwy Ldg	8501
110.3	301°	TDZE	73
Chan 40		Apt Elev	73

LOC BC RWY 30

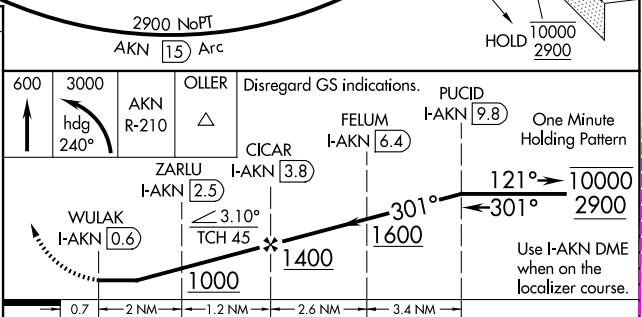
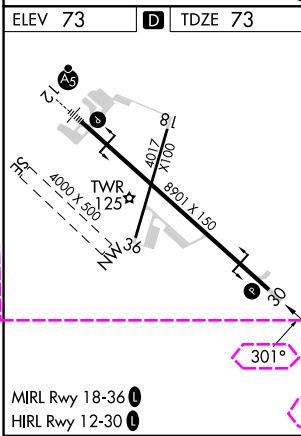
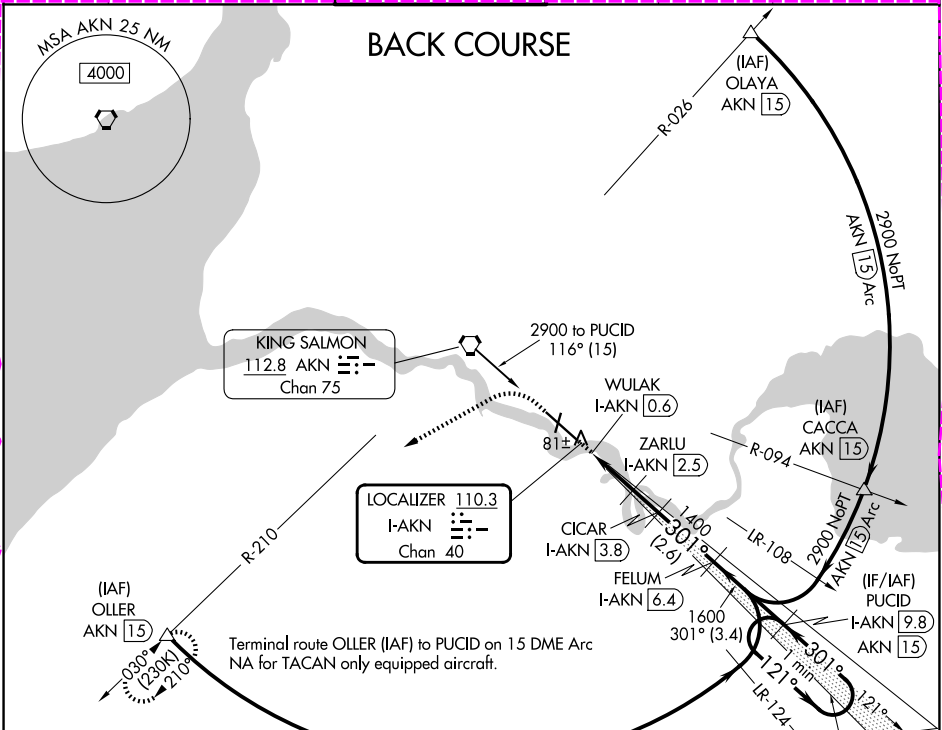
KING SALMON (AKN)(PAKN)

DME required.

When local altimeter setting not received, use WSN/PWFS altimeter setting and increase all MDAs 40 feet.

MISSED APPROACH: Climb to 600 then climbing left turn to 3000 on heading 240° and AKN VORTAC R-210 to OLLER/ AKN 15 DME and hold.

ATIS	ANCHORAGE CENTER	KING SALMON TOWER*	GND CON	UNICOM	CTAF
128.8	124.8 354.0	118.3 279.5	121.9	122.95	121.9 352.05



CATEGORY	A	B	C	D	E
S-30	340-1 267 (300-1)				
CIRCLING	580-1 507 (600-1)	580-1½ 507 (600-1½)	900-2¾ 827 (900-2¾)	960-3 887 (900-3)	

KING SALMON, ALASKA
Amdt 6A 07AUG25

58°41'N-156°39'W

KING SALMON (AKN)(PAKN)
LOC BC RWY 30

AK 07 AUG 2025 to 02 OCT 2025

AK 07 AUG 2025 to 02 OCT 2025